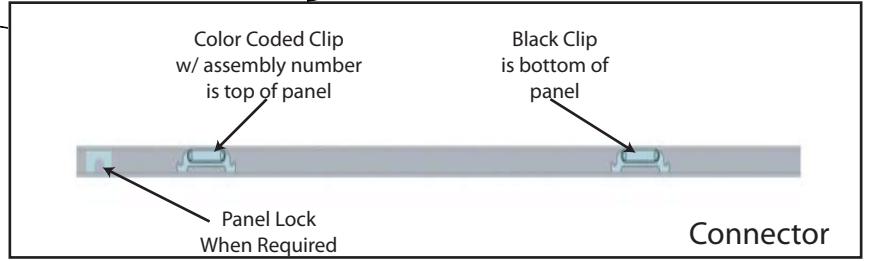
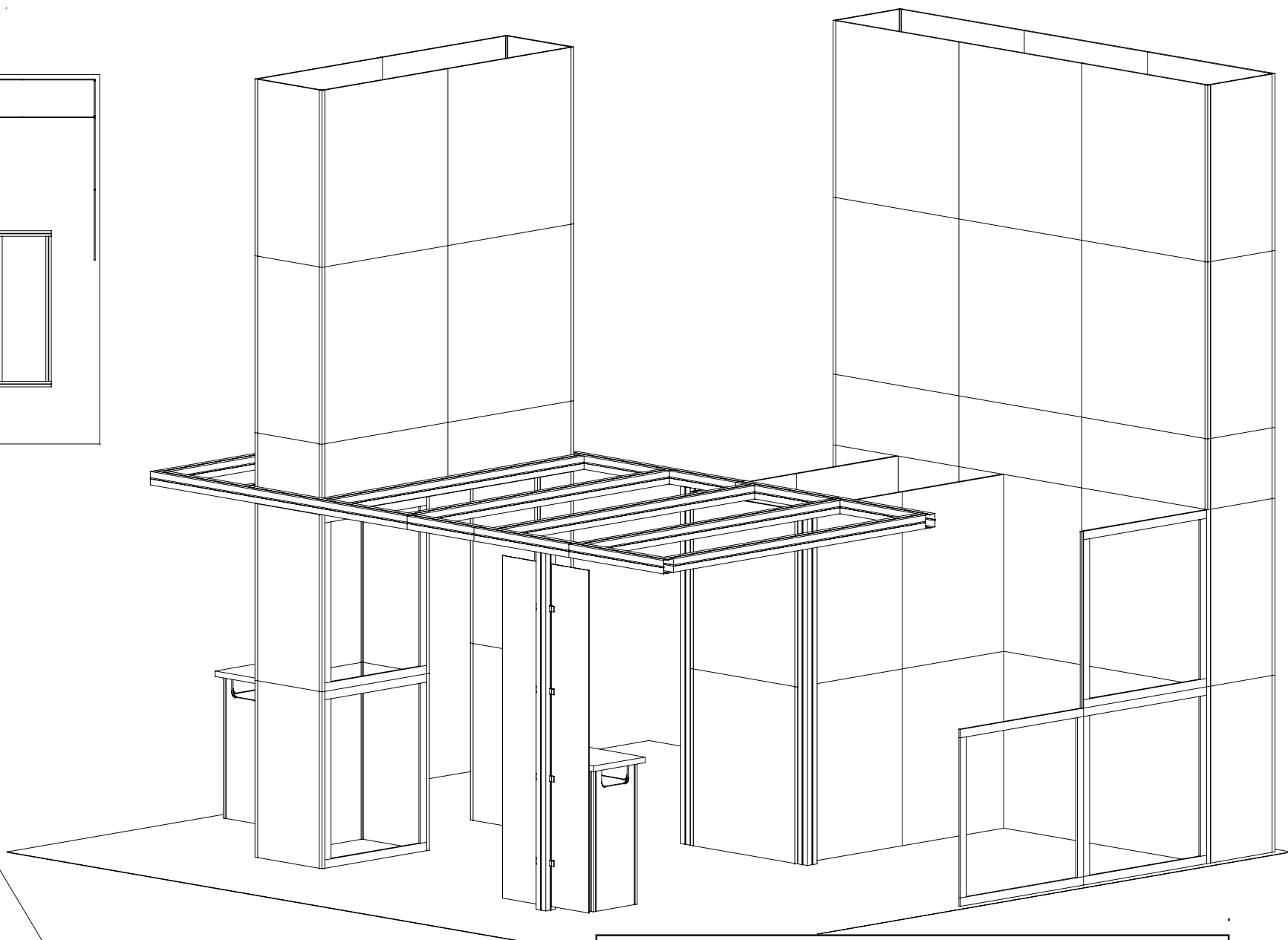
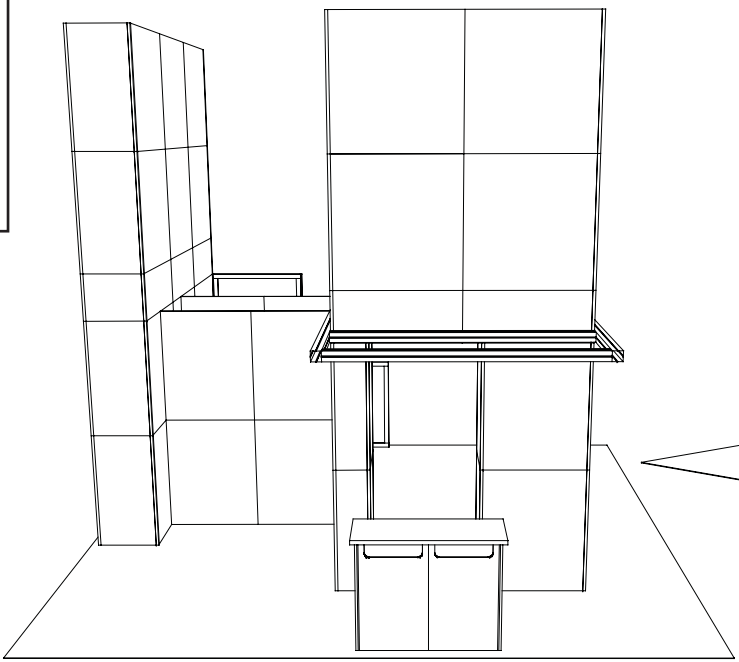
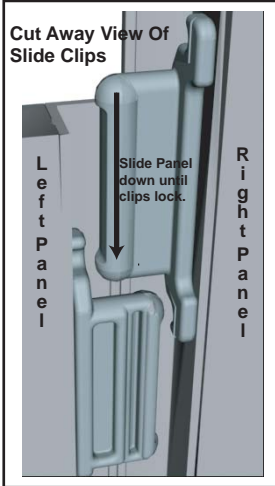
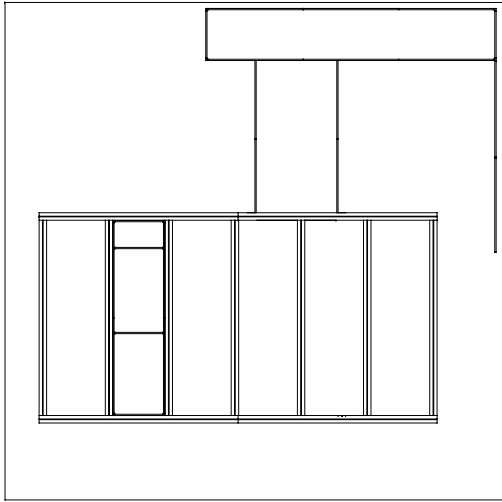
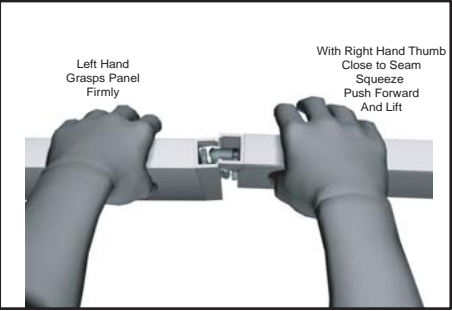
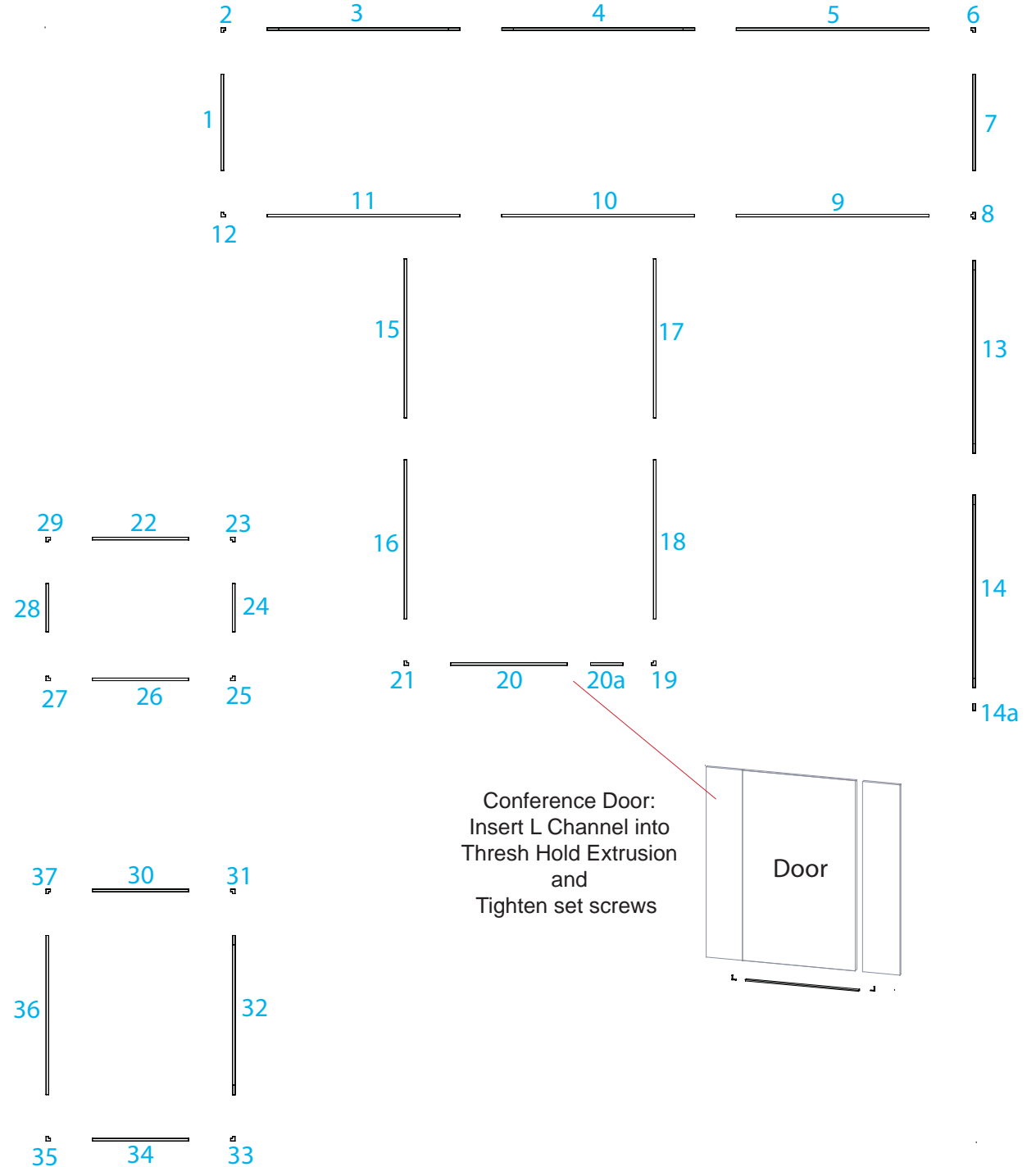
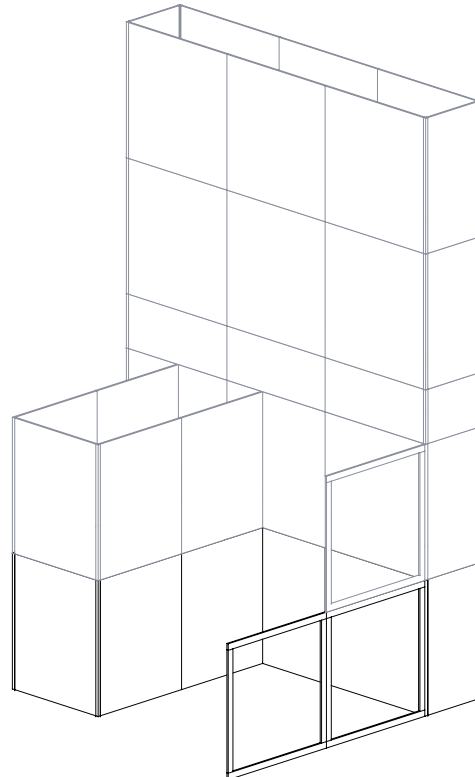
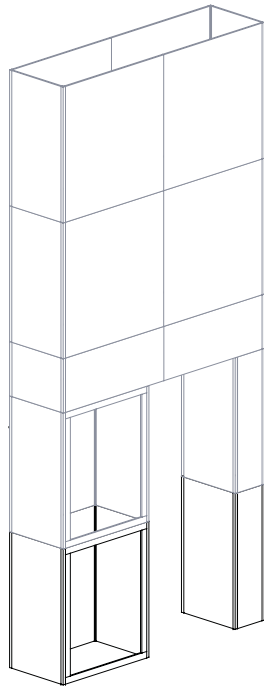


# General Layout - Order #24853



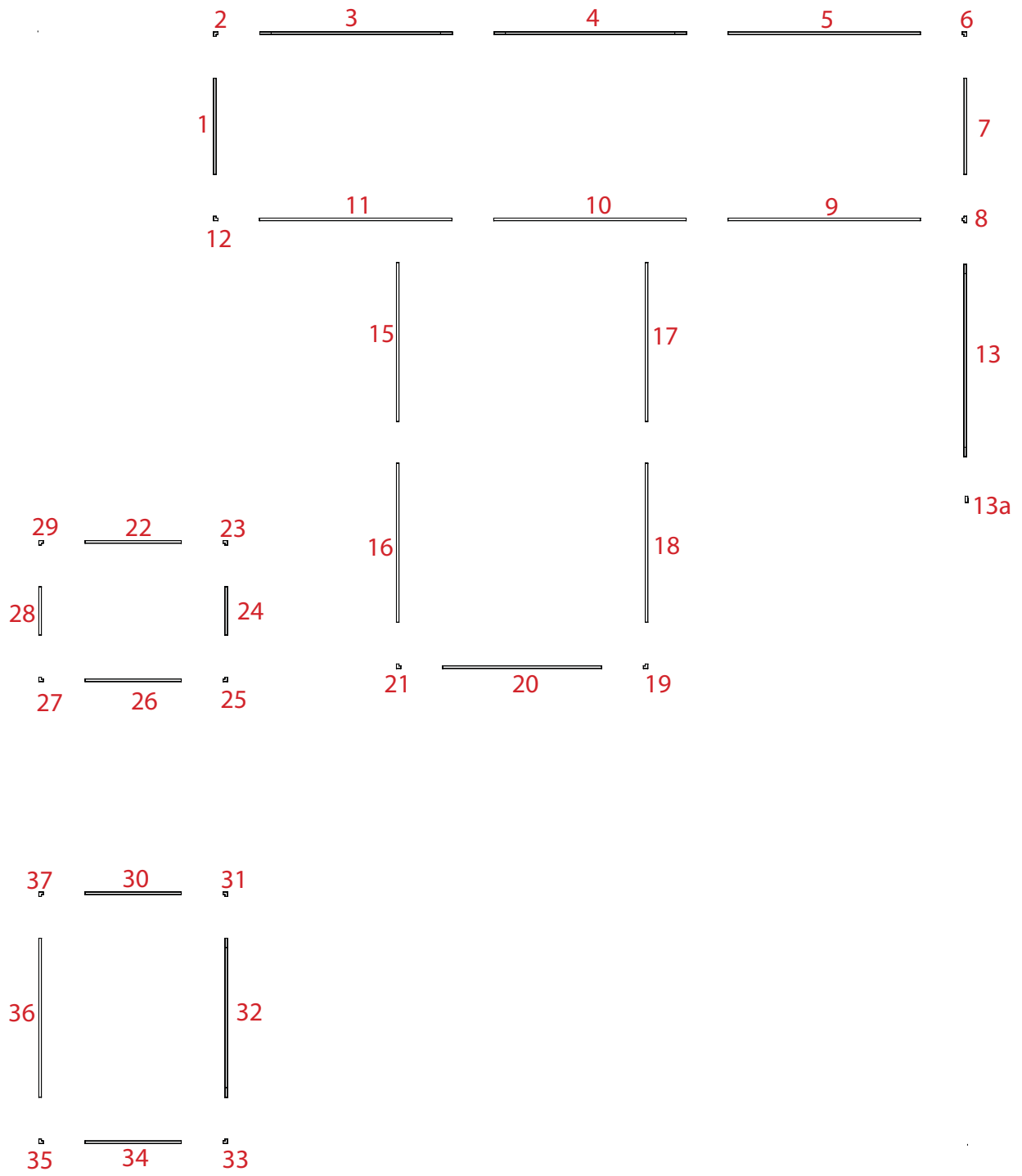
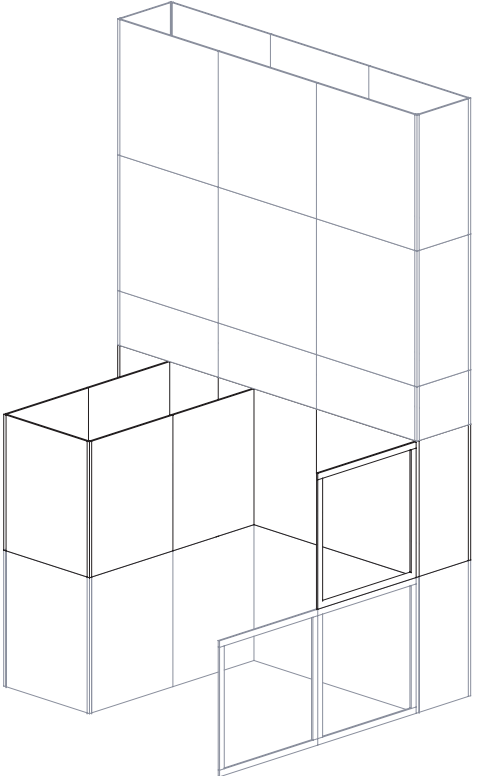
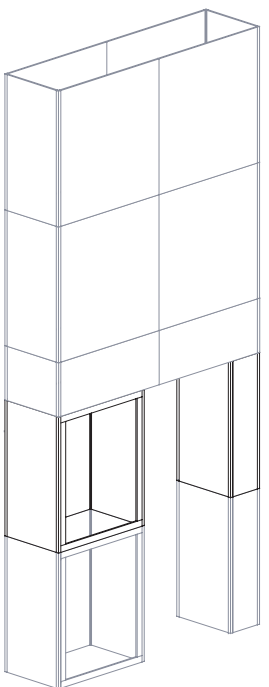
# Level 1 - Order #24853 - Page 1

Item Number	Description	Item Number	Description
1	23"w x 47.5"h Flat Panel	20	38"w x 47.5"h Conference Door Panel
2	47.5"h 90° Connector	20a	47.5"h Conference Door Panel
3	46"w x 47.5"h Window Panel	21	47.5"h 90° Connector
4	46"w x 47.5"h Window Panel	22	23"w x 47.5"h Flat Panel
5	46"w x 47.5"h Flat Panel	23	47.5"h 90° Connector
6	47.5"h 90° Connector	24	11.5"w x 47.5"h Flat Panel
7	23"w x 47.5"h Flat Panel	25	47.5"h 90° Connector
8	47.5"h 90° Connector	26	23"w x 47.5"h Flat Panel
9	46"w x 47.5"h Flat Panel	27	47.5"h 90° Connector
10	46"w x 47.5"h Flat Panel	28	11.5"w x 47.5"h Flat Panel
11	46"w x 47.5"h Flat Panel	29	47.5"h 90° Connector
12	47.5"h 90° Connector	30	23"w x 47.5"h Flat Panel
13	46"w x 47.5"h Window Panel	31	47.5"h 90° Connector
14	46"w x 47.5"h Window Panel	32	38"w x 47.5"h Window Panel
14a	47.5"h End Cap	33	47.5"h 90° Connector
15	38"w x 47.5"h Flat Panel	34	23"w x 47.5"h Flat Panel
16	38"w x 47.5"h Flat Panel	35	47.5"h 90° Connector
17	38"w x 47.5"h Flat Panel	36	38"w x 47.5"h Flat Panel
18	38"w x 47.5"h Flat Panel	37	47.5"h 90° Connector
19	47.5"h 90° Connector		



# Level 2 - Order #24853 - Page 2

Item Number	Description	Item Number	Description
1	23"w x 47.5"h Flat Panel	20	38"w x 47.5"h Flat Panel
2	47.5"h 90° Connector	21	47.5"h 90° Connector
3	46"w x 47.5"h Window Panel	22	23"w x 47.5"h Flat Panel
4	46"w x 47.5"h Window Panel	23	47.5"h 90° Connector
5	46"w x 47.5"h Flat Panel	24	11.5"w x 47.5"h Flat Panel
6	47.5"h 90° Connector	25	47.5"h 90° Connector
7	23"w x 47.5"h Flat Panel	26	23"w x 47.5"h Flat Panel
8	47.5"h 90° Connector	27	47.5"h 90° Connector
9	46"w x 47.5"h Flat Panel	28	11.5"w x 47.5"h Flat Panel
10	46"w x 47.5"h Flat Panel	29	47.5"h 90° Connector
11	46"w x 47.5"h Flat Panel	30	23"w x 47.5"h Flat Panel
12	47.5"h 90° Connector	31	47.5"h 90° Connector
13	46"w x 47.5"h Window Panel	32	38"w x 47.5"h Window Panel
13a	47.5"h End Cap	33	47.5"h 90° Connector
15	38"w x 47.5"h Flat Panel	34	23"w x 47.5"h Flat Panel
16	38"w x 47.5"h Flat Panel	35	47.5"h 90° Connector
17	38"w x 47.5"h Flat Panel	36	38"w x 47.5"h Flat Panel
18	38"w x 47.5"h Flat Panel	37	47.5"h 90° Connector
19	47.5"h 90° Connector		



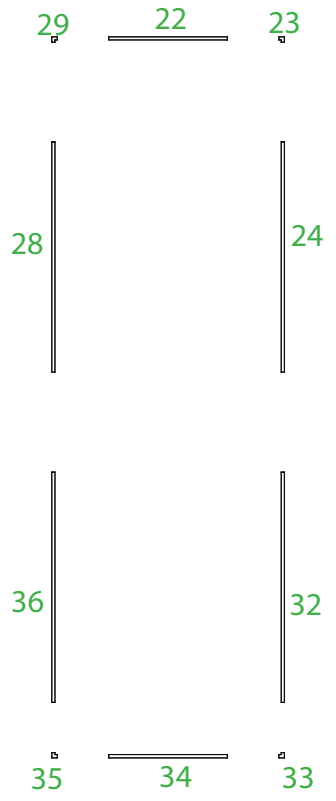
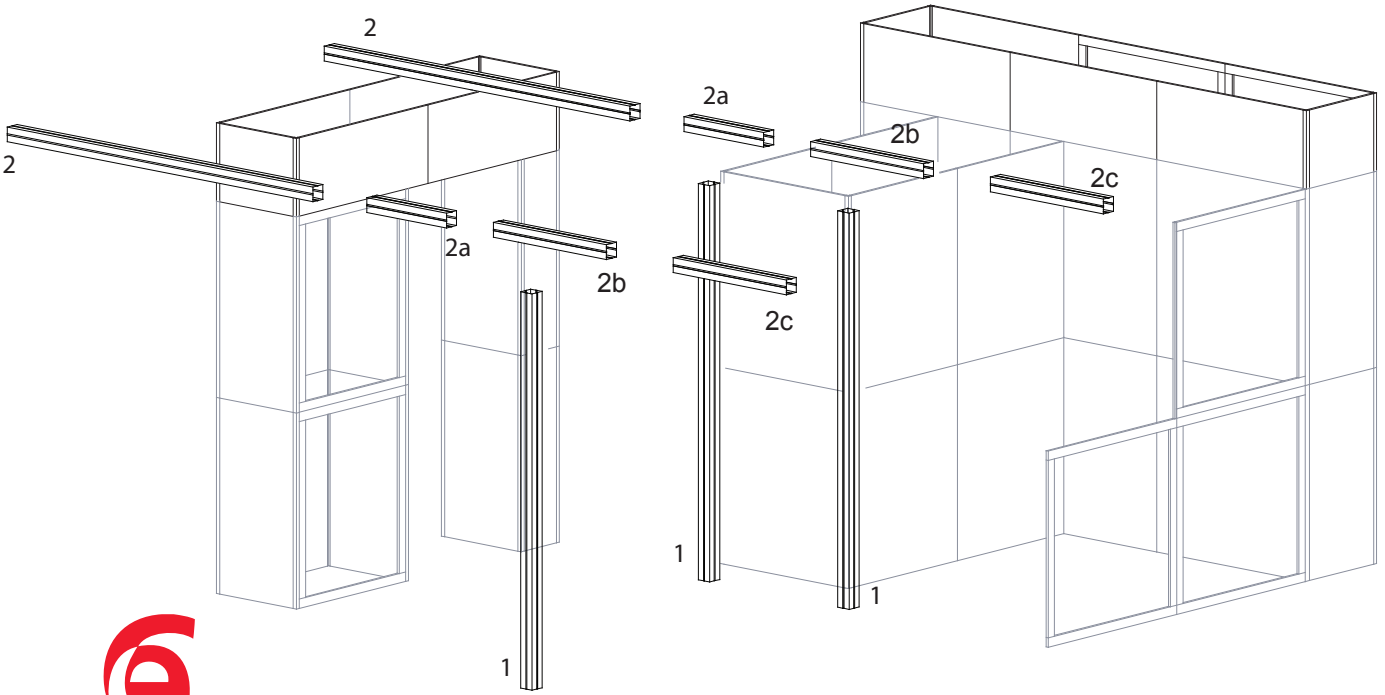
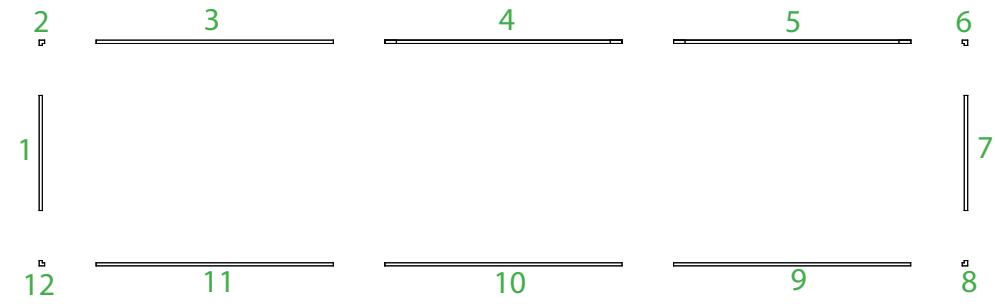
# Level 3 - Order #24853 - Page 3

Item Number	Description	Item Number	Description
1	23"w x 19"h Flat Panel	22	23"w x 19"h Flat Panel w/ wood fill
2	19"h 90° Connector	23	19"h 90° Connector
3	46"w x 19"h Flat Panel	24	46"w x 19"h Flat Panel
4	46"w x 19"h Window Panel	28	46"w x 19"h Flat Panel
5	46"w x 19"h Window Panel	29	19"h 90° Connector
6	19"h 90° Connector	32	46"w x 19"h Flat Panel
7	23"w x 19"h Flat Panel	33	19"h 90° Connector
8	19"h 90° Connector	34	23"w x 19"h Flat Panel
9	46"w x 19"h Flat Panel	35	19"h 90° Connector
10	46"w x 19"h Flat Panel	36	46"w x 19"h Flat Panel
11	46"w x 19"h Flat Panel		
12	19"h 90° Connector		

**Steps:**

- 1) Connect horizontal extrusions 2 to 2a to 2b to 2c as shown.
- 2) Connect vertical extrusions 1 to assembled horizontals 2/2a/2b/2c.
- 3) Support assembled extrusion structure in upright position while another person attaches extrusion 2 to panels 22 and 34.

**NOTE:**  
Assemble third level leaving 23, 24, 32, and 33 until after attaching horizontal extrusions #2/2a/2b/2c to panels 22 and 34. Then continue on assembling third level.

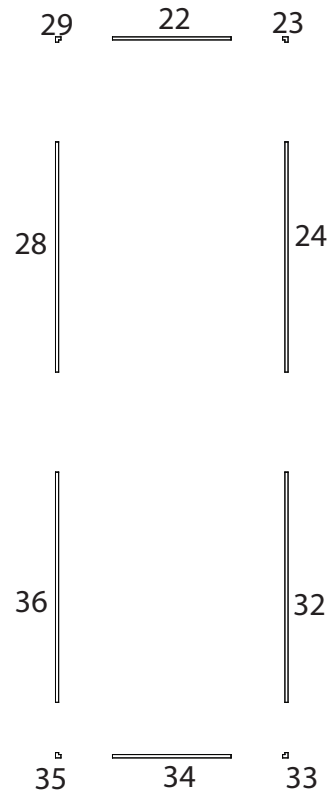
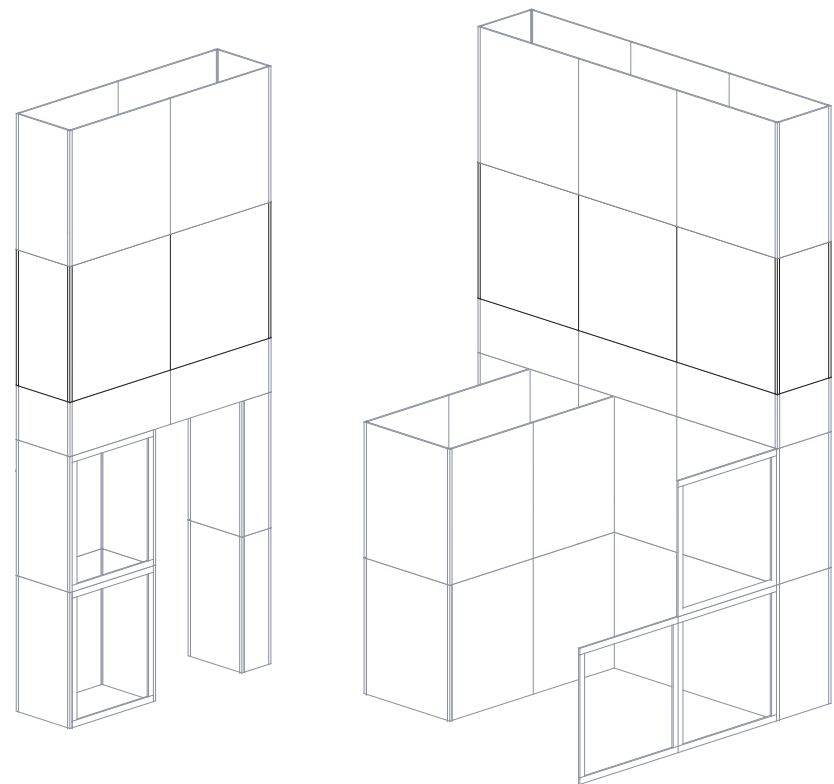
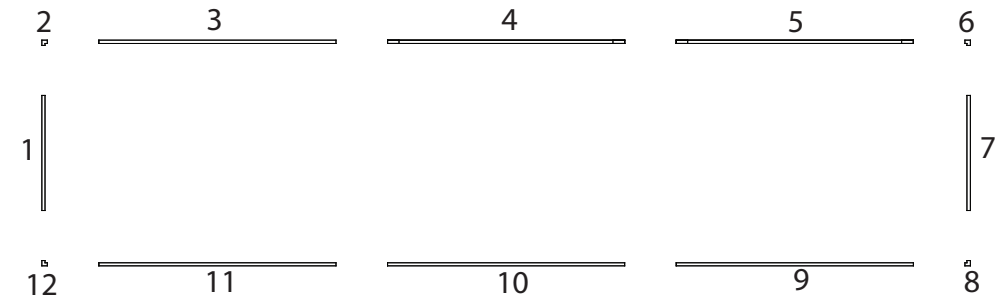


**PANEL TO EXTRUSION ATTACHMENT**

Insert thumbscrews through back of panels 22 and 34, then attach to horizontal extrusions.

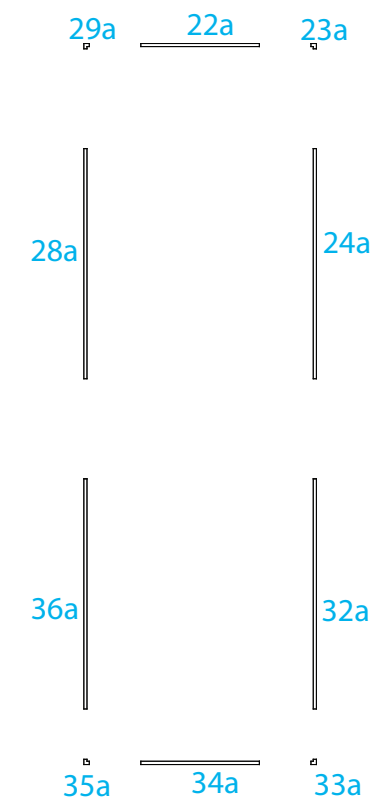
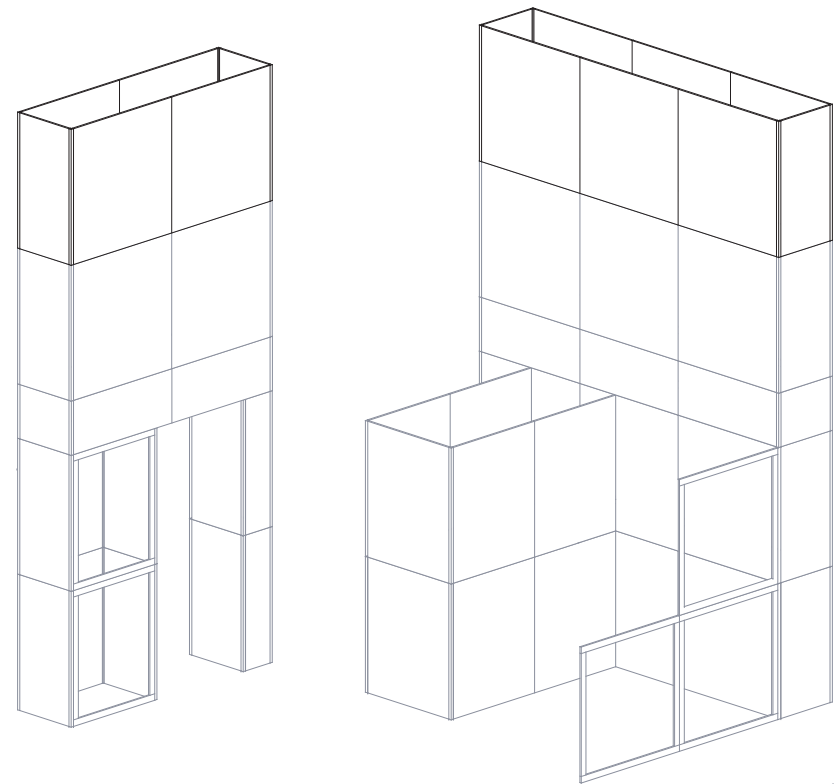
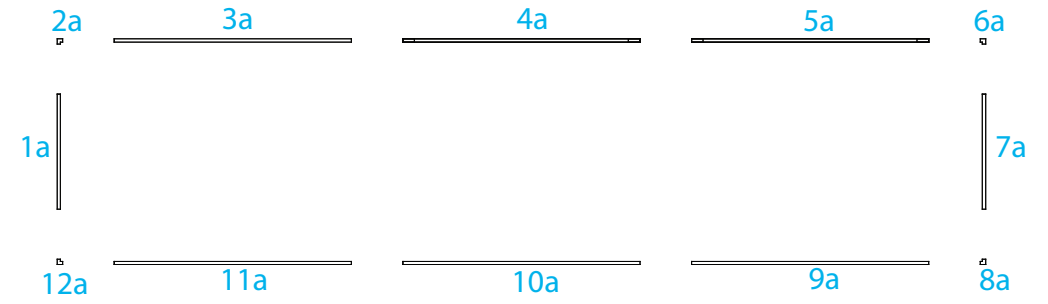
# Level 4 - Order #24853 - Page 4

Item Number	Description	Item Number	Description
1	23"w x 47.5"h Flat Panel	22	23"w x 47.5"h Flat Panel
2	47.5"h 90° Connector	23	47.5"h 90° Connector
3	46"w x 47.5"h Flat Panel	24	46"w x 47.5"h Flat Panel
4	46"w x 47.5"h Window Panel	28	46"w x 47.5"h Flat Panel
5	46"w x 47.5"h Window Panel	29	47.5"h 90° Connector
6	47.5"h 90° Connector	32	46"w x 47.5"h Flat Panel
7	23"w x 47.5"h Flat Panel	33	47.5"h 90° Connector
8	47.5"h 90° Connector	34	23"w x 47.5"h Flat Panel
9	46"w x 47.5"h Flat Panel	35	47.5"h 90° Connector
10	46"w x 47.5"h Flat Panel	36	46"w x 47.5"h Flat Panel
11	46"w x 47.5"h Flat Panel		
12	47.5"h 90° Connector		



# Level 5 - Order #24853 - Page 5

Item Number	Description	Item Number	Description
1a	23"w x 47.5"h Flat Panel	22a	23"w x 47.5"h Flat Panel
2a	47.5"h 90° Connector	23a	47.5"h 90° Connector
3a	46"w x 47.5"h Flat Panel	24a	46"w x 47.5"h Flat Panel
4a	46"w x 47.5"h Flat Panel	28a	46"w x 47.5"h Flat Panel
5a	46"w x 47.5"h Flat Panel	29a	47.5"h 90° Connector
6a	47.5"h 90° Connector	32a	46"w x 47.5"h Flat Panel
7a	23"w x 47.5"h Flat Panel	33a	47.5"h 90° Connector
8a	47.5"h 90° Connector	34a	23"w x 47.5"h Flat Panel
9a	46"w x 47.5"h Flat Panel	35a	47.5"h 90° Connector
10a	46"w x 47.5"h Flat Panel	36a	46"w x 47.5"h Flat Panel
11a	46"w x 47.5"h Flat Panel		
12a	47.5"h 90° Connector		

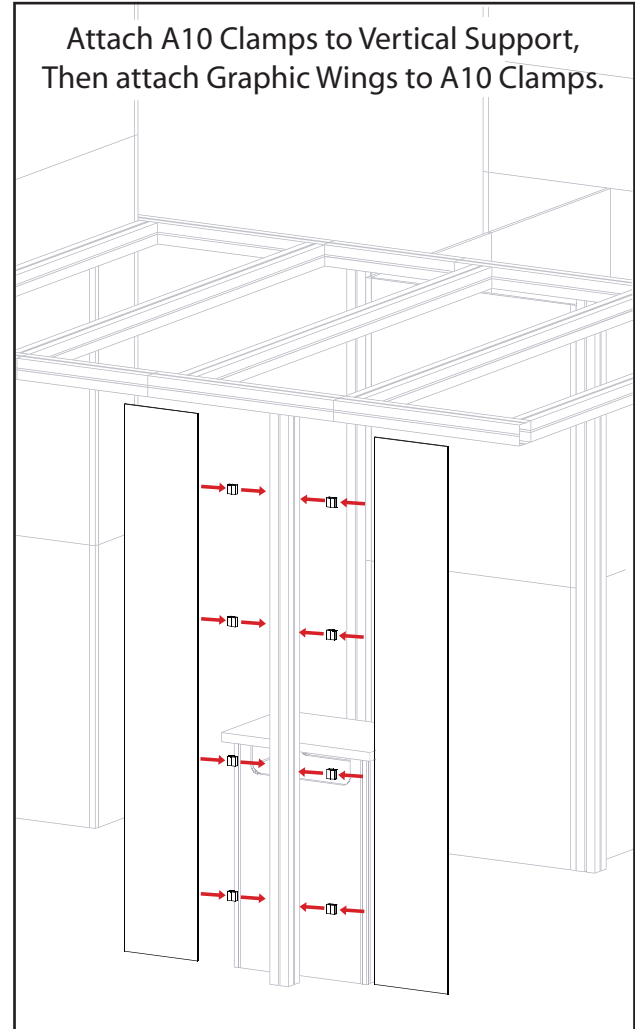
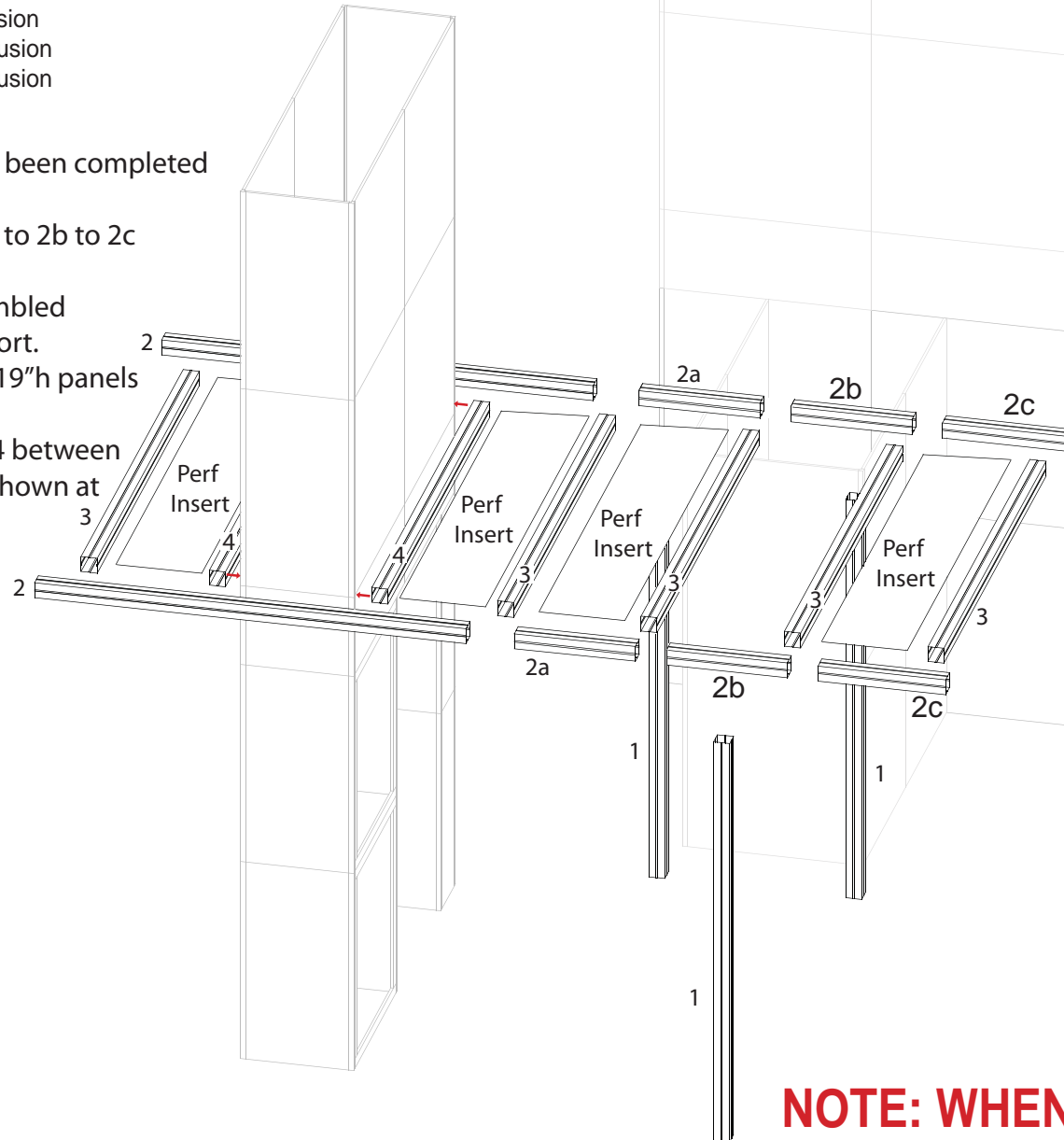


# Custom Canopy Assembly - Order #24853 - Page 6

Item Number	QTY	Description
1	1	96"h Vertical Extrusion
2	2	96"h Horizontal Extrusion
2a	2a	25"h Horizontal Extrusion
2b	2b	35.5"h Horizontal Extrusion
2c	2c	35.5"h Horizontal Extrusion
3	3	94.25"h Horizontal Extrusion
4	4	94.25"h Horizontal Extrusion

Steps: Note - Step 1,2 and 3 should have been completed on page 3.

- 1) Connect horizontal extrusions 2 to 2a to 2b to 2c as shown at right.
- 2) Connect vertical extrusions 1 to assembled Canopy Section as indicated for support.
- 3) Horizontal extrusions 2 will attach to 19"h panels using hardware provided for support.
- 4) Connect horizontal extrusions 3 and 4 between horizontal assemblies 2/2a/2b/2c as shown at right. Place Perf Inserts as indicated.



Attach A10 Clamps to Vertical Support, Then attach Graphic Wings to A10 Clamps.

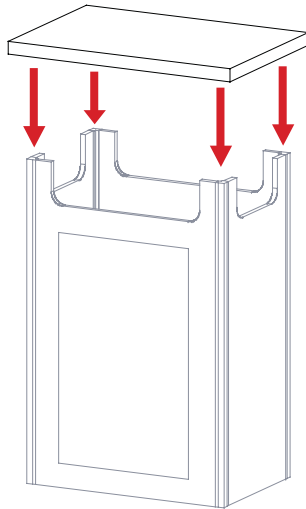
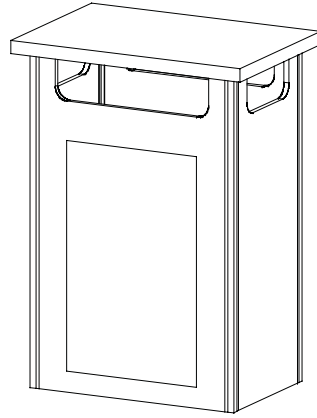
**NOTE: WHEN DISASSEMBLING EXTRUSION TIGHTEN ALL LOCKS TO PREVENT LOSS OF SETSCREWS**



# Pedestal Assembly - Order #24853 - Page 7

Item Number	Description
40	23"w x 38"h Flat Panel
41	38"h 90° Connector
42	14.125"w x 38"h Flat Panel
43	38"h 90° Connector
44	23"w x 38"h Flat Panel w/ Door
45	38"h 90° Connector
46	14.125"w x 38"h Flat Panel
47	38"h 90° Connector

**QTY: 2**



Item Number	Description
48	23"w x 38"h Flat Panel
49	23"w x 38"h Flat Panel
50	38"h 90° Connector
51	14.125"w x 38"h Flat Panel
52	38"h 90° Connector
53	23"w x 38"h Flat Panel w/ Door
54	23"w x 38"h Flat Panel w/ Door
55	38"h 90° Connector
56	14.125"w x 38"h Flat Panel
57	38"h 90° Connector

**QTY: 1**

