

WHEN DISASSEMBLING ALUMINUM EXTRUSION, TIGHTEN ALL SETSCREWS AND LOCKS TO PREVENT LOSS DURING SHIPPING

visionary™ IDESIGNS

Using Your Setup Instructions

The Visionary Designs Setup Instructions are created specifically for your configuration. They are laid out sequentially, including an exploded view of the entire display, and then a logical series of detailed steps to assemble the main structure and components. We encourage you to study the instructions **before** attempting to assemble your exhibit.

Each page reminds you to tighten the setscrews after disassembling your exhibit to prevent loss of the locks and setscrews (see below in RED). This is **VERY IMPORTANT**.

Cleaning and Packing Your Display

- 1) Use care when cleaning aluminum extrusion or acrylic inserts. Use only non-abrasive cleaners.
- 2) When cleaning laminate inserts or countertops, use mild cleansers and a soft material such as cotton.
- 3) Keep all display components away from extreme heat and long exposure to sunlight to avoid warping and fading.
- 4) Retain all packing material. It will make re-packing much easier and will reduce the likelihood of shipping damage.



The Tool

Most Visionary Designs exhibits can be assembled with the supplied Hex Key Tool. Occasionally, a flat head screwdriver may be required.

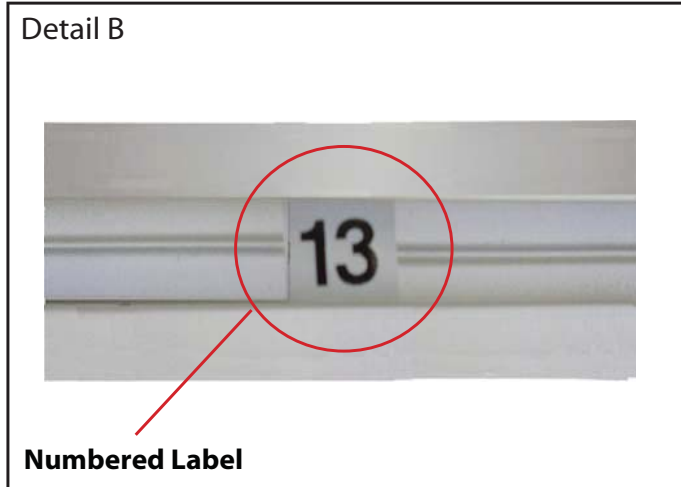


Typical Connection

Most horizontal extrusion connections have a patented expandable lock. This lock inserts into the groove of an opposing extrusion. Tightening the lock with the Hex Key Tool expands the lock and creates a strong positive connection.



Typical Connection (cont'd)



Detail B

Numbered Label

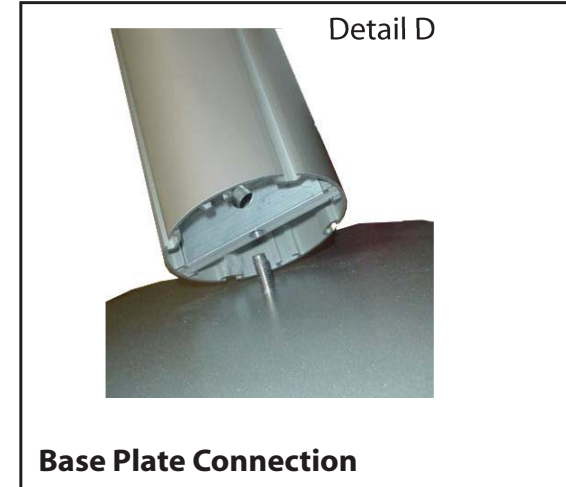
Each extrusion contains a numbered label which corresponds with setup instructions. The label is located within a groove of the extrusion (when possible). With Visionary Designs the labels contain Black numbers unless otherwise specified.



Detail C

Horizontal Inline Connection (remove only one setscrew)

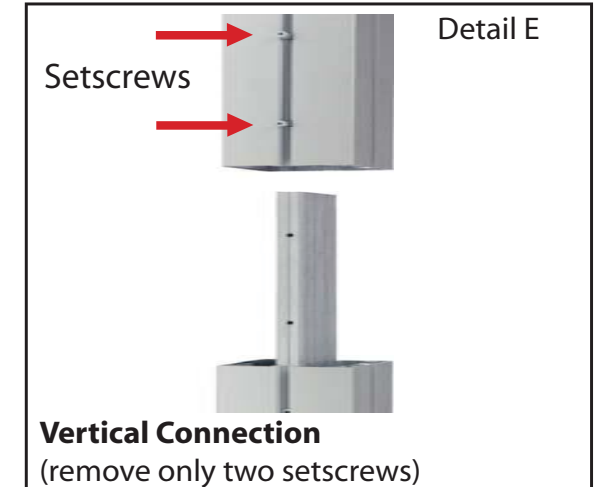
Remove only (1) setscrew when disassembling. Replace setscrew in extrusion after assembling it. Before packing, replace setscrew in extrusion to avoid losing it.



Detail D

Base Plate Connection

Attach base plate to round or square vertical extrusion using the bolt provided. Be careful not to strip the threads.



Detail E

Vertical Connection
(remove only two setscrews)

When vertical extrusions are packed in portable cases rather than crates or tubs, they must be broken down into smaller sections which then require assembly.

Remove only (2) setscrews when disassembling. Replace setscrews in extrusion after assembling it. Before packing, replace setscrews in extrusion to avoid losing them.

WHEN DISASSEMBLING ALUMINUM EXTRUSION, TIGHTEN ALL SETSCREWS AND LOCKS TO PREVENT LOSS DURING SHIPPING

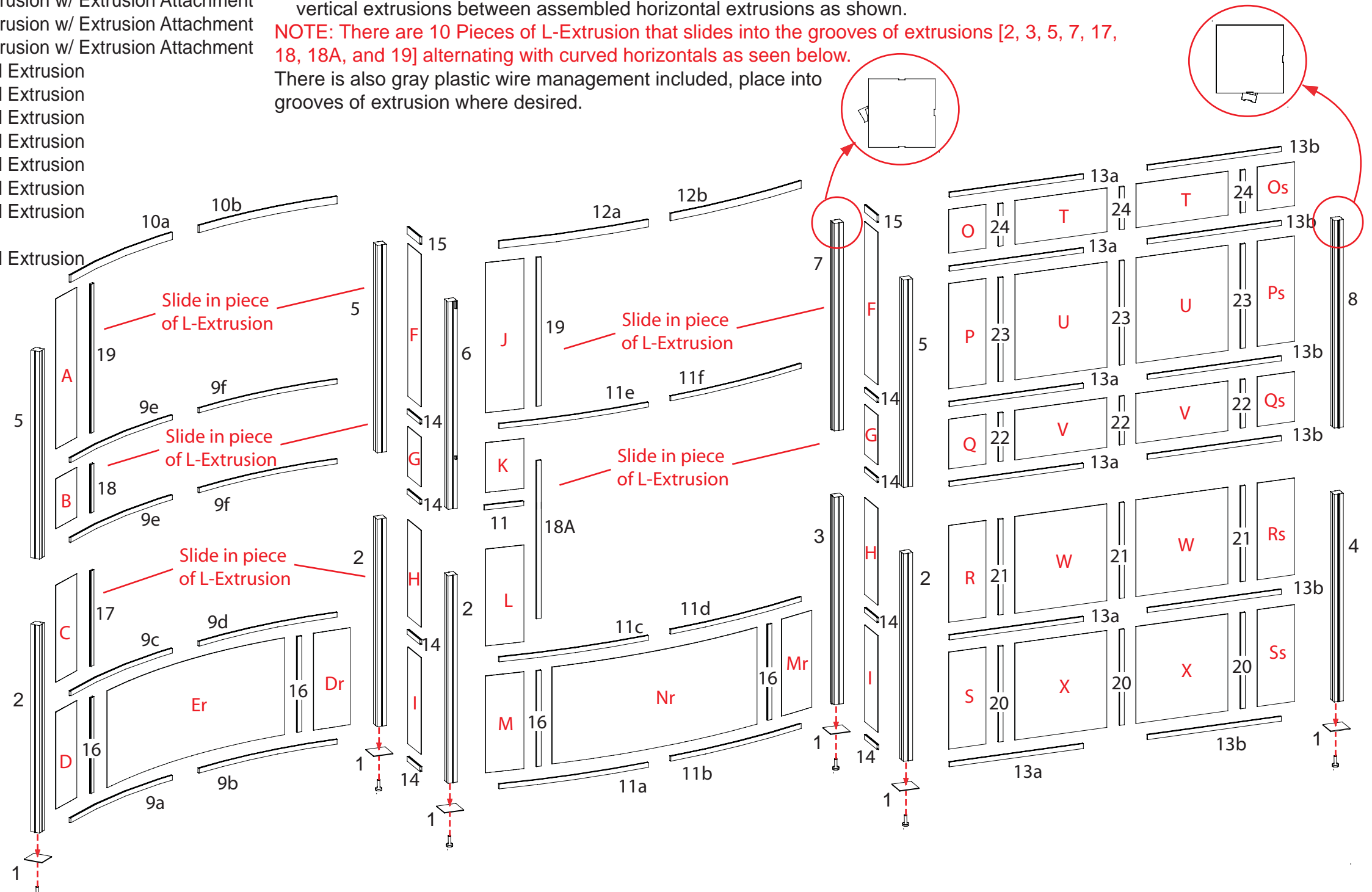
Item	Qty. per Step	Description
1	6	Square Base Plate
2	4	78.0625" h Lower Vertical Extrusion
3	1	78.0625" h Lower Vertical Extrusion w/ Extrusion Attachment
4	1	78.0625" h Lower Vertical Extrusion w/ Extrusion Attachment
5	2	78.0625" h Upper Vertical Extrusion
5A	1	78.0625" h Upper Vertical Extrusion w/ Extrusion Attachment
6	1	78.0625" h Upper Vertical Extrusion w/ Extrusion Attachment
7	1	78.0625" h Upper Vertical Extrusion w/ Extrusion Attachment
8	1	78.0625" h Upper Vertical Extrusion w/ Extrusion Attachment
9a/9b	1/1	58.9525" w Curved Horizontal Extrusion
9c/9d	1/1	58.9525" w Curved Horizontal Extrusion
9e/9f	2/2	58.9525" w Curved Horizontal Extrusion
10a/10b	1/1	58.9525" w Curved Horizontal Extrusion
11a/11b	1/1	58.6550" w Curved Horizontal Extrusion
11c/11d	1/1	58.6550" w Curved Horizontal Extrusion
11e/11f	1/1	58.6550" w Curved Horizontal Extrusion
11	1	Curved Horizontal Extrusion
12a/12b	1/1	58.6550" w Curved Horizontal Extrusion
13a/13b	6/6	52" w Horizontal Extrusion
14	8	12" w Horizontal Extrusion
15	2	12" h Horizontal Extrusion
16	4	35.9950" h Vertical Extrusion
17	1	35.9590" h Vertical Extrusion
18	1	18.25" h Vertical Extrusion
18A	1	56" h Vertical Extrusion w/ Extrusion Attachment
19	2	56" h Vertical Extrusion w/ Extrusion Attachment
20	3	35.9950" h Vertical Extrusion
21	3	35.9590" h Vertical Extrusion
22	3	18.25" h Vertical Extrusion
23	3	39.1710" h Vertical Extrusion
24	3	16" h Vertical Extrusion

Steps:

- 1) Attach lower vertical extrusions [2, 3 and 4] to base plates [1], see DetailD on General Information Page.
- 2) Attach upper vertical extrusions [5, 6, 7 and 8] atop lower vertical extrusions [2, 3 and 4].
- 3) Connect horizontal extrusions [9a - 9f, 10a to 10b, 11a - 11f, 12a to 12b and 13a to 13b] together.
- 4) Attach horizontal extrusions [9 - 15] between assembled vertical extrusions, placing inserts and attaching vertical extrusions between assembled horizontal extrusions as shown.

NOTE: There are 10 Pieces of L-Extrusion that slides into the grooves of extrusions [2, 3, 5, 7, 17, 18, 18A, and 19] alternating with curved horizontals as seen below.

There is also gray plastic wire management included, place into grooves of extrusion where desired.



WHEN DISASSEMBLING ALUMINUM EXTRUSION, TIGHTEN ALL SETSCREWS AND LOCKS TO PREVENT LOSS DURING SHIPPING

Gray Laminated Inserts:

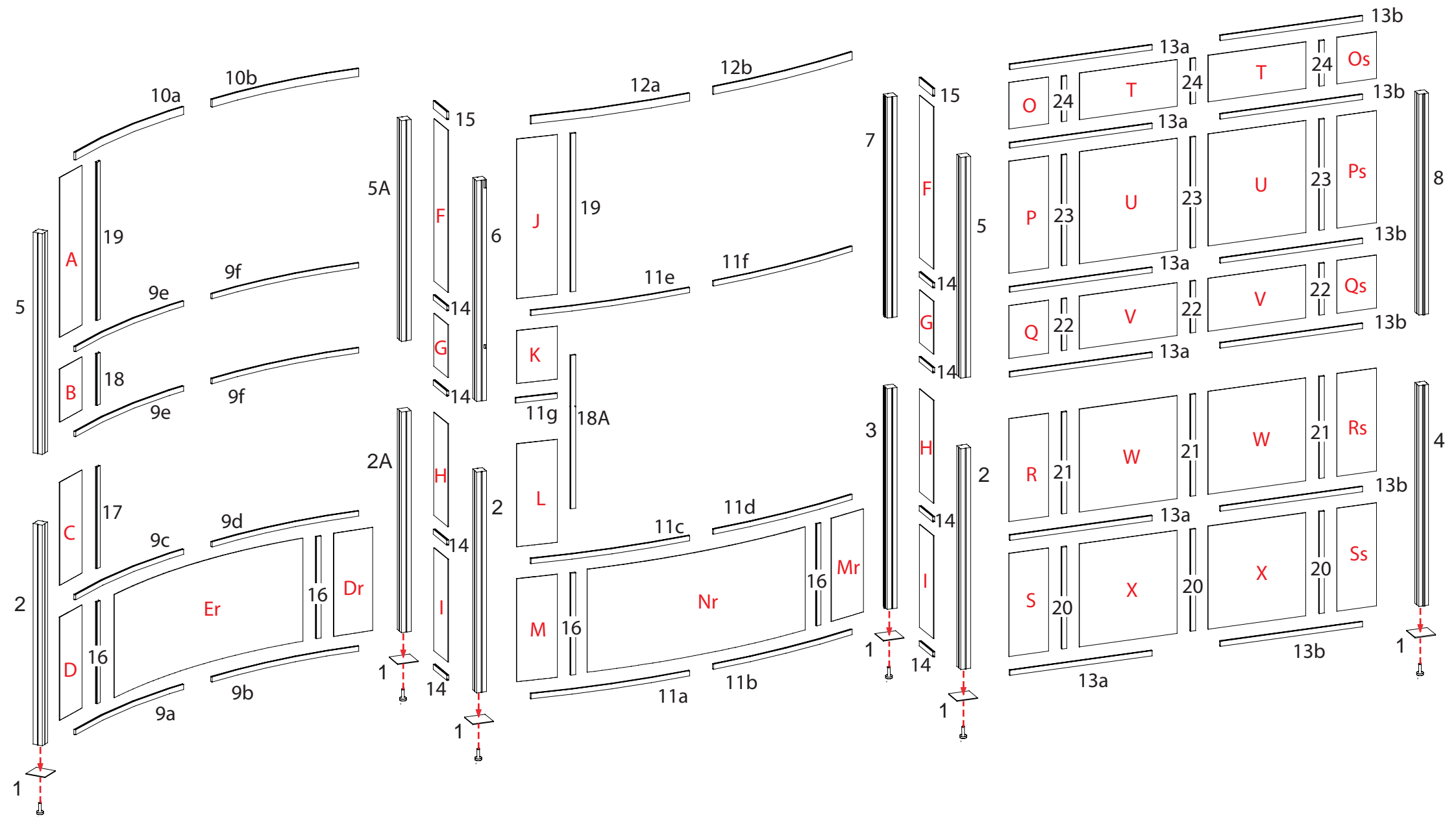
- A - 14.4929"w x 56.4375"h
- B - 14.4929"w x 18.6875"h
- C - 14.4929"w x 36.3965"h
- D - 14.4929"w x 36.4325"h
- F - 12.4375"w x 56.4375"h
- G - 12.4375"w x 18.6875"h
- H - 12.4375"w x 36.3965"h
- I - 14.4929"w x 36.4325"h
- J - 14.4929"w x 56.4375"h
- K - 14.4929"w x 18.6875"h
- L - 14.4929"w x 36.3965"h
- M - 14.4929"w x 36.4325"h
- O - 14.4375"w x 16.4375"h
- P - 14.4375"w x 39.6085"h
- Q - 14.4375"w x 18.6875"h
- R - 14.4375"w x 36.3965"h
- S - 14.4375"w x 36.4375"h

Red Laminated Inserts:

- Dr - 14.4929"w x 36.4325"h
- Er - 86.6267"w x 36.4325"h
- Mr - 14.4929"w x 36.4325"h
- Nr - 85.6760"w x 36.4325"h

White Sintra inserts:

- Os - 14.4375"w x 16.4375"h
- Ps - 14.4375"w x 39.6085"h
- Qs - 14.4375"w x 18.6875"h
- Rs - 14.4375"w x 36.3965"h
- Ss - 14.4375"w x 36.4375"h
- T - 35.7505"w x 16.4375"h
- U - 35.7505"w x 39.6085"h
- V - 35.7505"w x 18.6875"h
- W - 35.7505"w x 36.3965"h
- X - 35.7505"w x 36.4375"h



WHEN DISASSEMBLING ALUMINUM EXTRUSION, TIGHTEN ALL SETSCREWS AND LOCKS TO PREVENT LOSS DURING SHIPPING

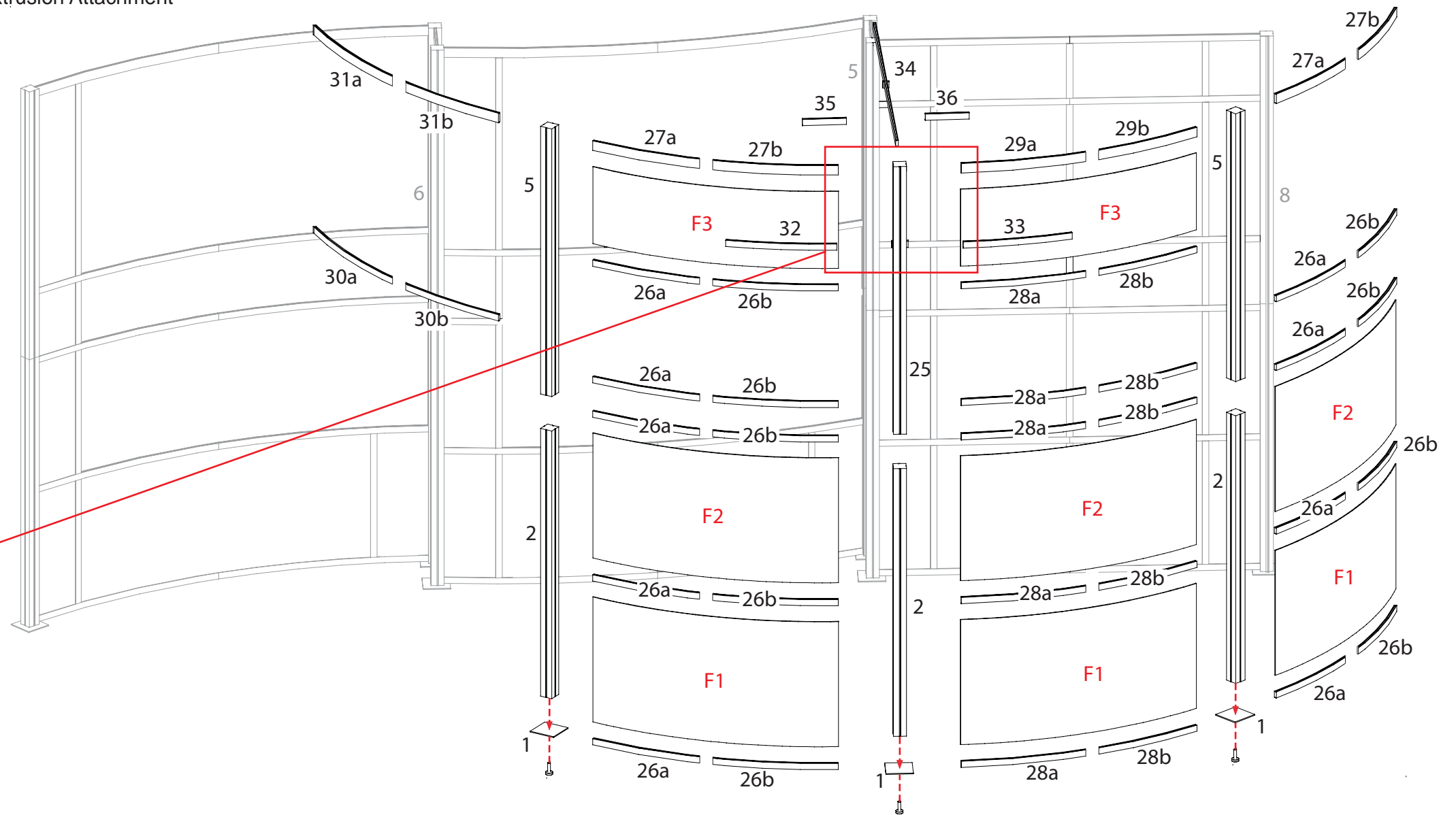
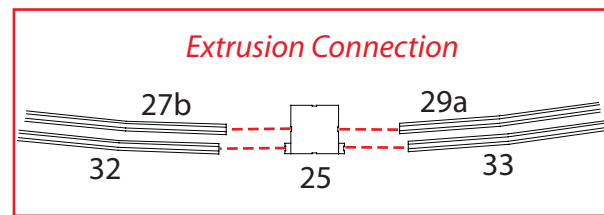
866.652.2100

Item	Qty.	per Step	Description
1	3		Square Base Plate
2	3		78.0625" h Lower Vertical Extrusion
5	2		78.0625" h Upper Vertical Extrusion
25	1		78.0625" h Upper Vertical Extrusion w/ Extrusion Attachment
26a/26b	9/9		35.1134" w Curved Horizontal Extrusion
27a/27b	2/2		35.1134" w Curved Horizontal Extrusion
28a/28b	5/5		35.1134" w Curved Horizontal Extrusion
29a/29b	1/1		35.1134" w Curved Horizontal Extrusion
30a/30b	1/1		40.7136" w Curved Horizontal Extrusion
31a/31b	1/1		40.7136" w Curved Horizontal Extrusion
32	1		30.5" w Horizontal Extrusion
33	1		30.5" w Horizontal Extrusion
34	1		82.965" w Horizontal Extrusion w/ Extrusion Attachment
35	1		12" w Horizontal Extrusion
36	1		12" w Horizontal Extrusion

Steps:

- 1) Attach lower vertical extrusions [2] to base plates [1], see DetailD on General Information Page.
- 2) Attach upper vertical extrusions [5 and 25] atop lower vertical extrusions [2].
- 3) Connect horizontal extrusions [26a to 26b, 27a to 27b, 28a to 28b, 29a to 29b, 30a to 30b and 31a to 31b] together.
- 4) Middle Section: Attach assembled horizontal extrusions [26a/26b and 27a/27b] between assembled vertical extrusions [2/5 and 2/25], placing inserts in place as shown.
- 5) Left Section: Attach assembled horizontal extrusions [30a/30b and 31a/31b] between vertical extrusions [5 and 6].
- 6) Right Section: Attach assembled horizontal extrusions [26a/26b and 27a/27b] between assembled vertical extrusions [2/5 and 4/8], placing inserts in place as shown.

Frosted Plex Insert
F1 - 70.4375" w x 36.4325"
F2 - 70.4375" w x 36.3965"
F3 - 70.4375" w x 22.4375"



WHEN DISASSEMBLING ALUMINUM EXTRUSION, TIGHTEN ALL SETSCREWS AND LOCKS TO PREVENT LOSS DURING SHIPPING

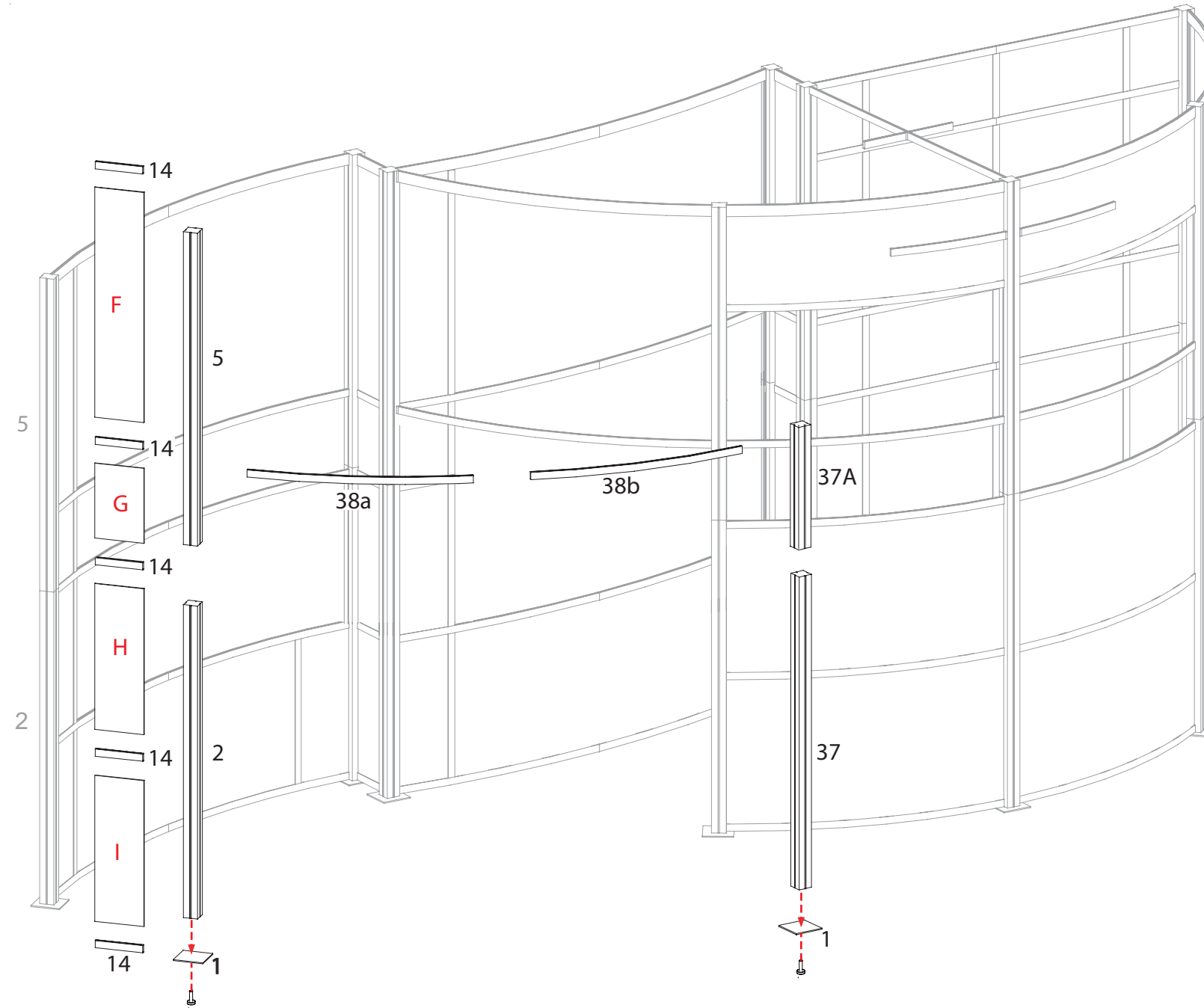
Item	Qty.	per step	Step	Description
1	2			Square Base Plate
2	1			78.0625" h Lower Vertical Extrusion
5	1			78.0625" h Upper Vertical Extrusion
14	5			12" w Horizontal Extrusion
37	1			78.0625" h Vertical Extrusion
37A	1			19.36" h Vertical Extrusion
38a/38b	1/1			54.9642" w Curved Horizontal Extrusion

Steps:

- 1) Attach vertical extrusions [2 and 37] to base plates [1], see DetailD on General Information Page.
- 2) Attach upper vertical extrusions [5 and 37A] atop vertical extrusions [2 and 37].
- 3) Attach horizontal extrusions [14] between assembled vertical extrusions [2/4], placing inserts between horizontal extrusions [13] as shown.
- 4) Connect curved horizontal extrusions [38a to 38b] together.
- 5) Attach assembled curved horizontal extrusion [38a/38b] between vertical extrusions [5 and 37A].

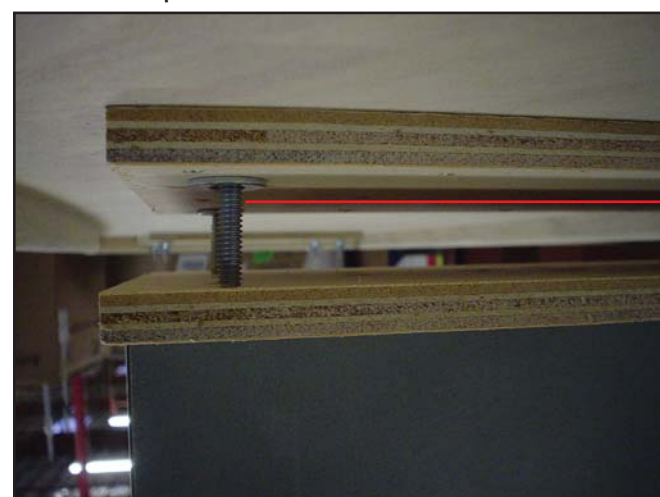
Gray Laminated Inserts:

- F - 12.4375" w x 56.4375" h
- G - 12.4375" w x 18.6875" h
- H - 12.4375" w x 36.3965" h
- I - 14.4929" w x 36.4325" h



WHEN DISASSEMBLING ALUMINUM EXTRUSION, TIGHTEN ALL SETSCREWS AND LOCKS TO PREVENT LOSS DURING SHIPPING

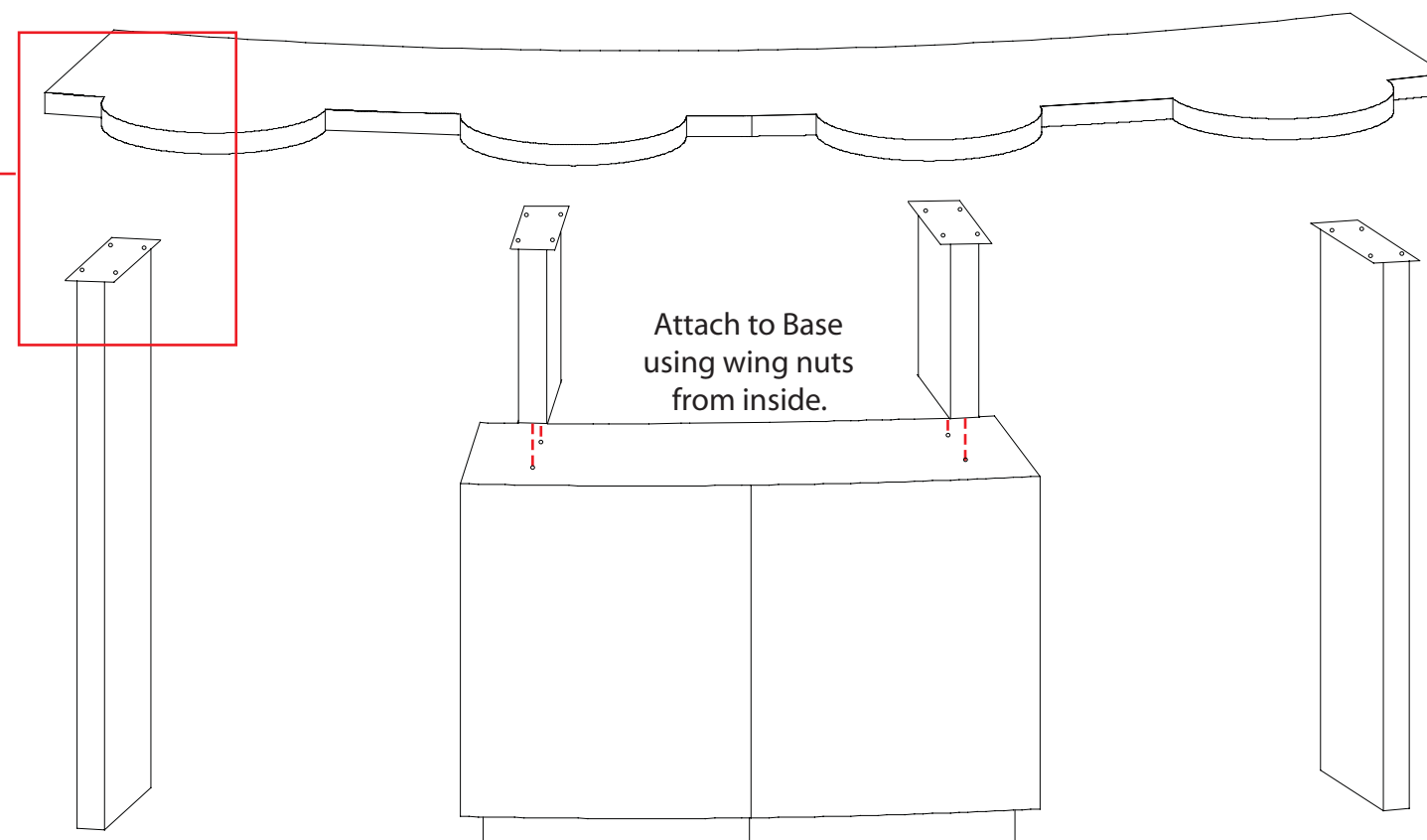
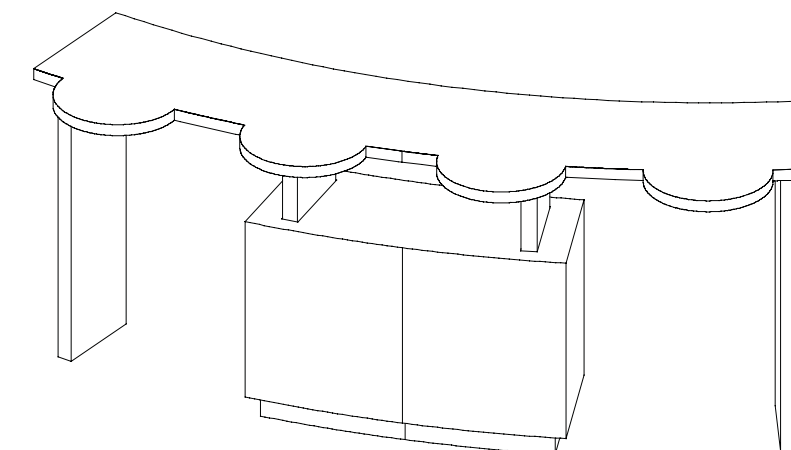
Counter Top Attachment



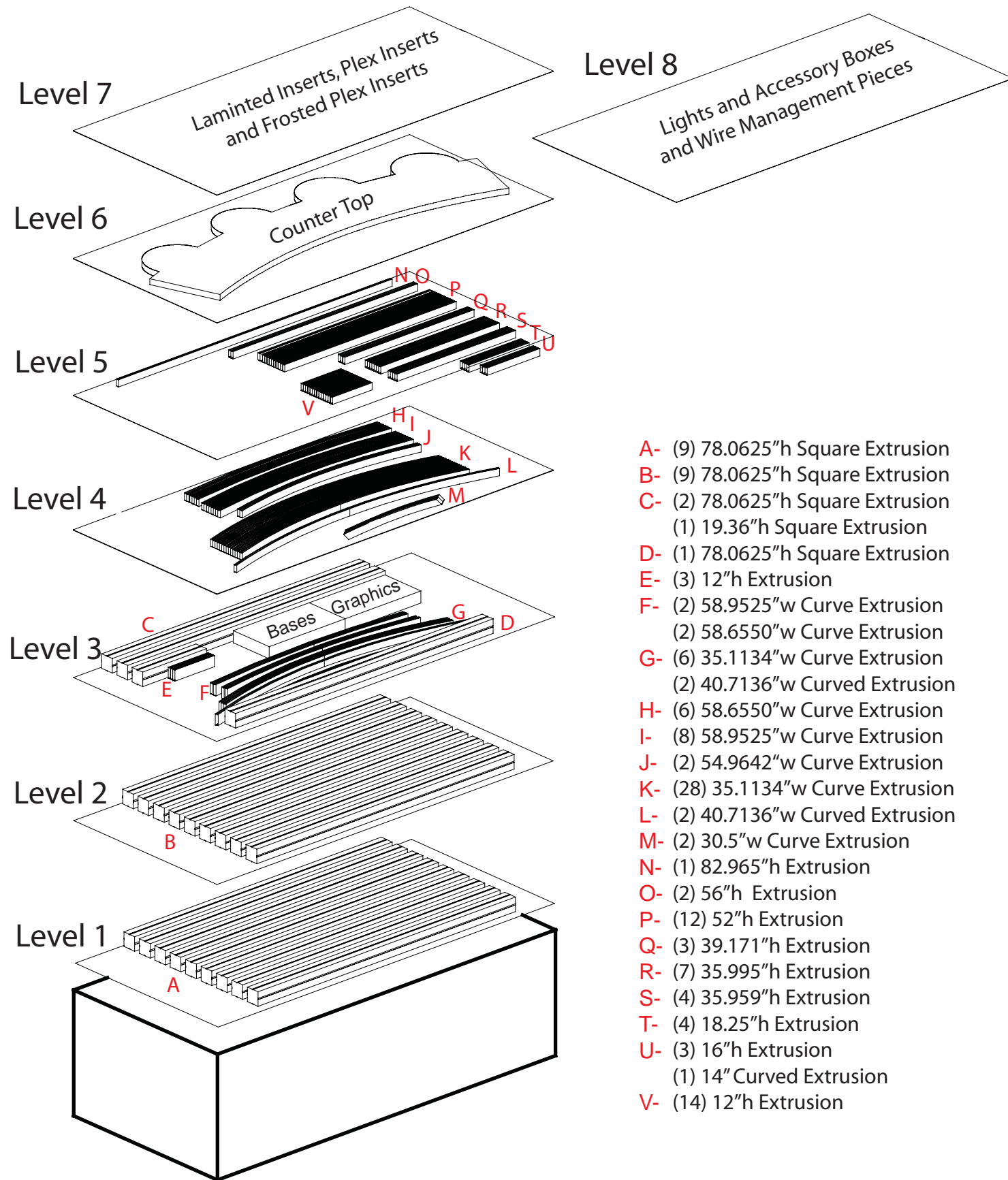
Place Counter atop bolts on Base and Side Legs.



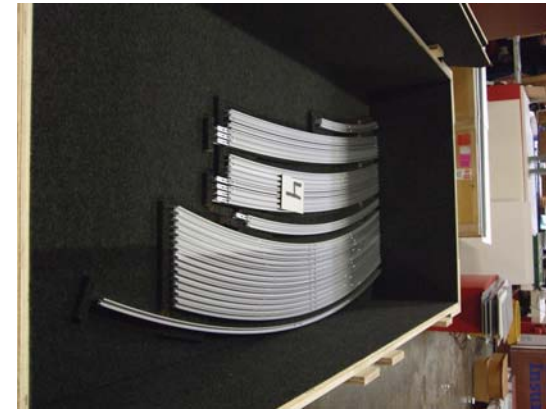
Tighten wing nuts to secure into place.



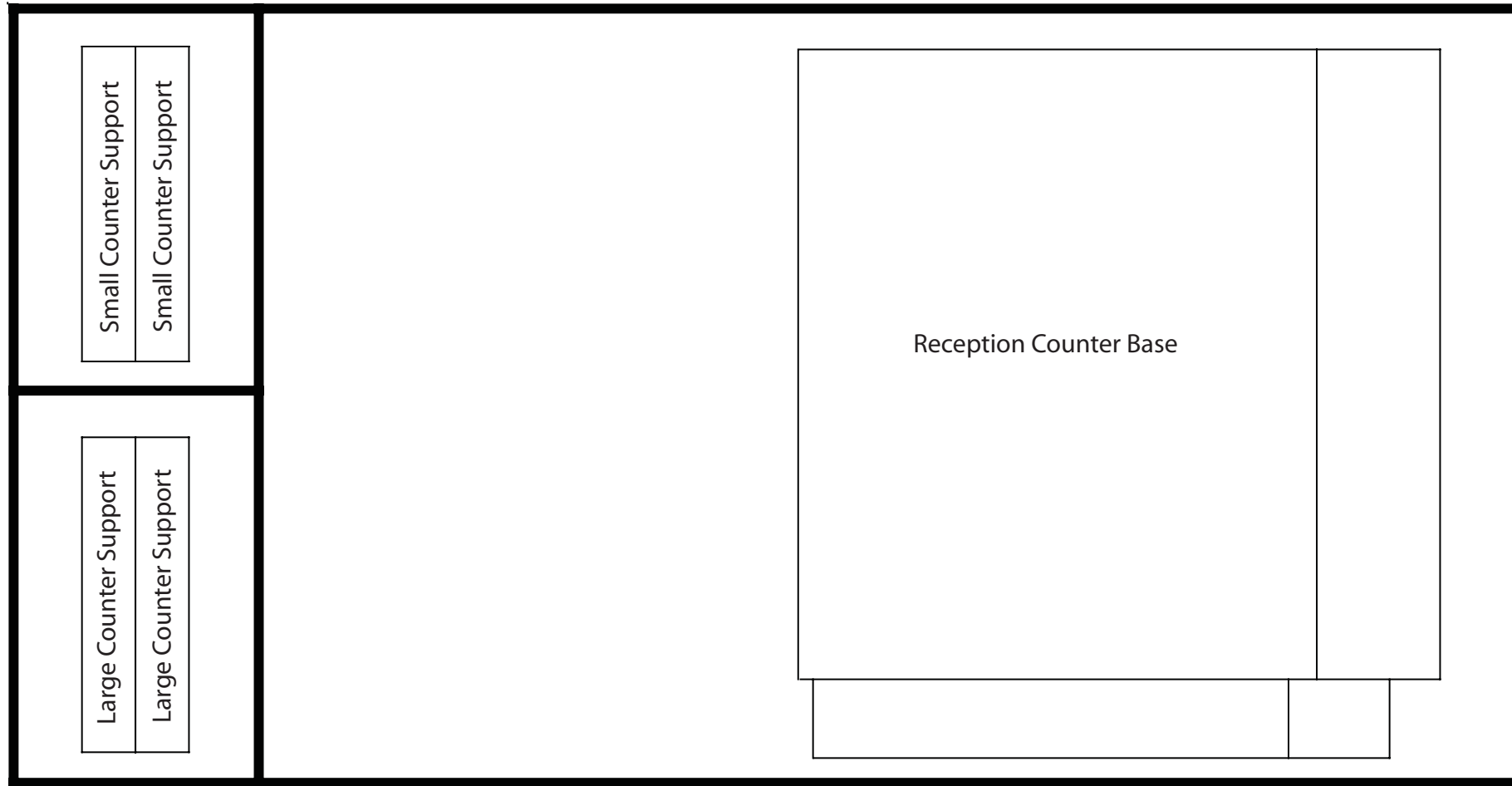
WHEN DISASSEMBLING ALUMINUM EXTRUSION, TIGHTEN ALL SETSCREWS AND LOCKS TO PREVENT LOSS DURING SHIPPING



- A- (9) 78.0625" h Square Extrusion
- B- (9) 78.0625" h Square Extrusion
- C- (2) 78.0625" h Square Extrusion
(1) 19.36" h Square Extrusion
- D- (1) 78.0625" h Square Extrusion
- E- (3) 12" h Extrusion
- F- (2) 58.9525" w Curve Extrusion
(2) 58.6550" w Curve Extrusion
- G- (6) 35.1134" w Curve Extrusion
(2) 40.7136" w Curved Extrusion
- H- (6) 58.6550" w Curve Extrusion
- I- (8) 58.9525" w Curve Extrusion
- J- (2) 54.9642" w Curve Extrusion
- K- (28) 35.1134" w Curve Extrusion
- L- (2) 40.7136" w Curved Extrusion
- M- (2) 30.5" w Curve Extrusion
- N- (1) 82.965" h Extrusion
- O- (2) 56" h Extrusion
- P- (12) 52" h Extrusion
- Q- (3) 39.171" h Extrusion
- R- (7) 35.995" h Extrusion
- S- (4) 35.959" h Extrusion
- T- (4) 18.25" h Extrusion
- U- (3) 16" h Extrusion
(1) 14" Curved Extrusion
- V- (14) 12" h Extrusion



WHEN DISASSEMBLING ALUMINUM EXTRUSION, TIGHTEN ALL SETSCREWS AND LOCKS TO PREVENT LOSS DURING SHIPPING



Front View of Case #2



WHEN DISASSEMBLING ALUMINUM EXTRUSION, TIGHTEN ALL SETSCREWS AND LOCKS TO PREVENT LOSS DURING SHIPPING

NOTE :

PDF copies of your Setup Instructions are available @ classicexhibits.com

See the search tool on the lower left hand corner of the Home page.

Enter the 5 digit Order #.

Search for Setup Instructions

search

WHEN DISASSEMBLING ALUMINUM EXTRUSION, TIGHTEN ALL
SETSCREWS AND LOCKS TO PREVENT LOSS DURING SHIPPING