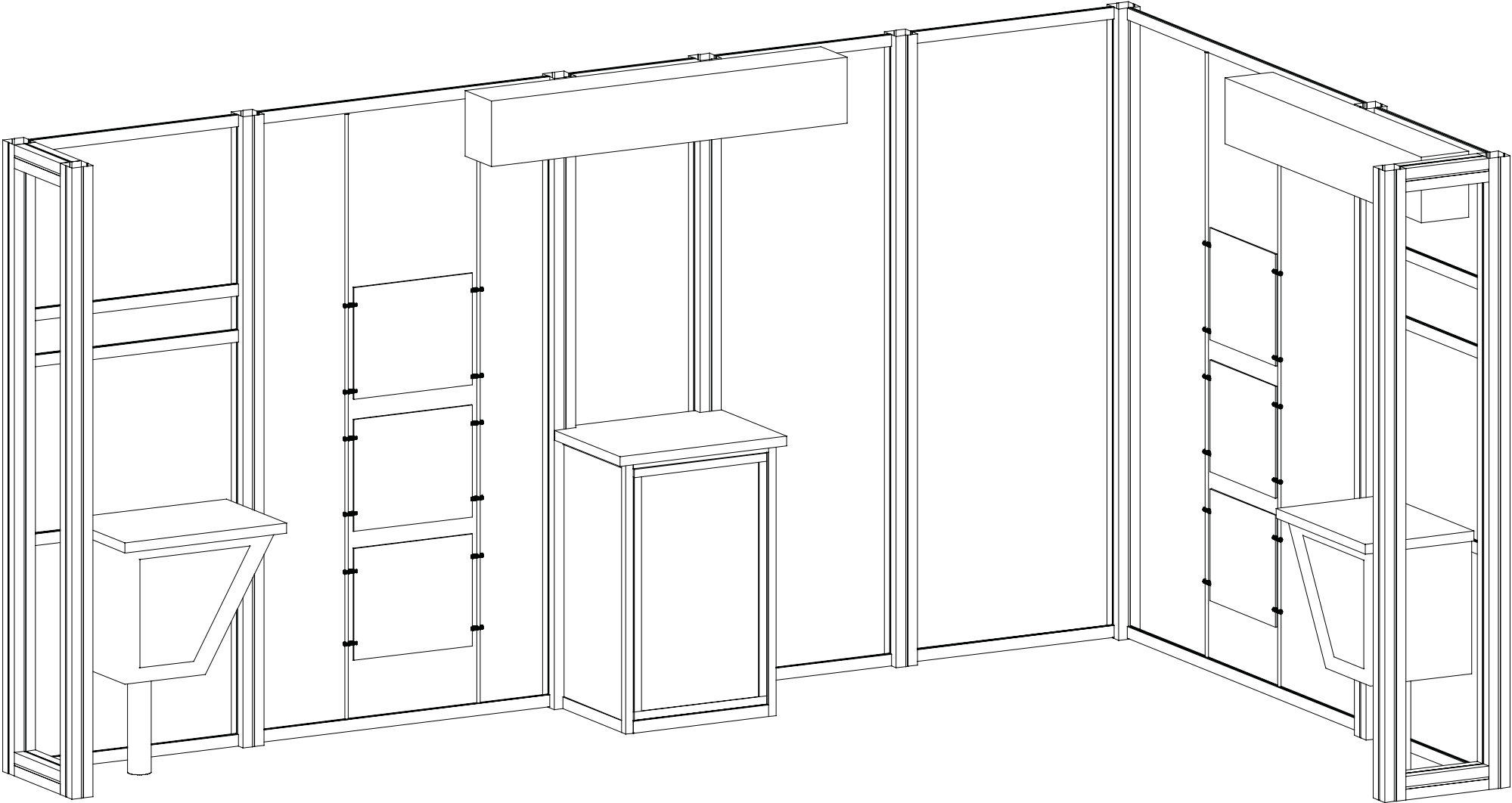
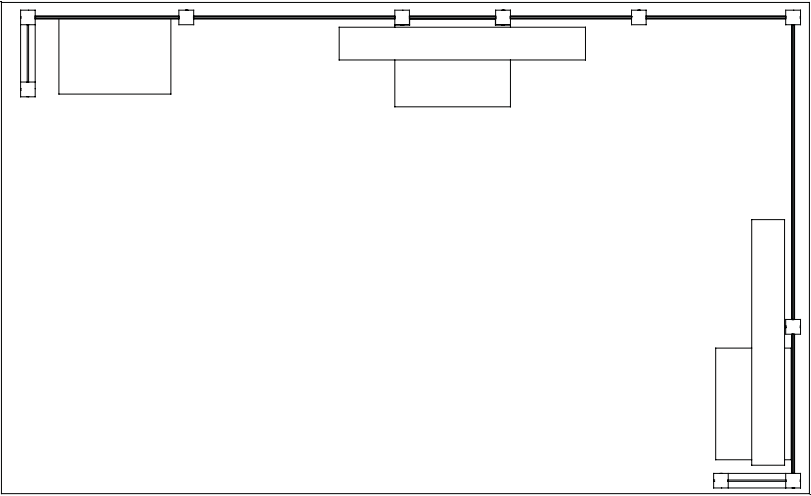


440 East Brackenridge Street
Fort Wayne, Indiana 46802
P (260) 424-2366 F (260) 424-2368
www.balduscompany.com



WHEN DISASSEMBLING ALUMINUM EXTRUSION, TIGHTEN ALL SETSCREWS AND LOCKS TO PREVENT LOSS DURING SHIPPING



440 East Brackenridge Street
 Fort Wayne, Indiana 46802
 P (260) 424-2366 F (260) 424-2368
 www.balduscompany.com

SINCE 1950

Using Your Setup Instructions

The Visionary Designs Setup Instructions are created specifically for your configuration. They are laid out sequentially, including an exploded view of the entire display, and then a logical series of detailed steps to assemble the main structure and components. We encourage you to study the instructions **before** attempting to assemble your exhibit.

Each page reminds you to tighten the setscrews after disassembling your exhibit to prevent loss of the locks and setscrews (see below in RED). This is VERY IMPORTANT.

Cleaning and Packing Your Display

- 1) Use care when cleaning aluminum extrusion or acrylic inserts. Use only non-abrasive cleaners.
- 2) When cleaning laminate inserts or countertops, use mild cleansers and a soft material such as cotton.
- 3) Keep all display components away from extreme heat and long exposure to sunlight to avoid warping and fading.
- 4) Retain all packing material. It will make re-packing much easier and will reduce the likelihood of shipping damage.



The Tool

Most Visionary Designs exhibits can be assembled with the supplied Hex Key Tool. Occasionally, a flat head screwdriver may be required.

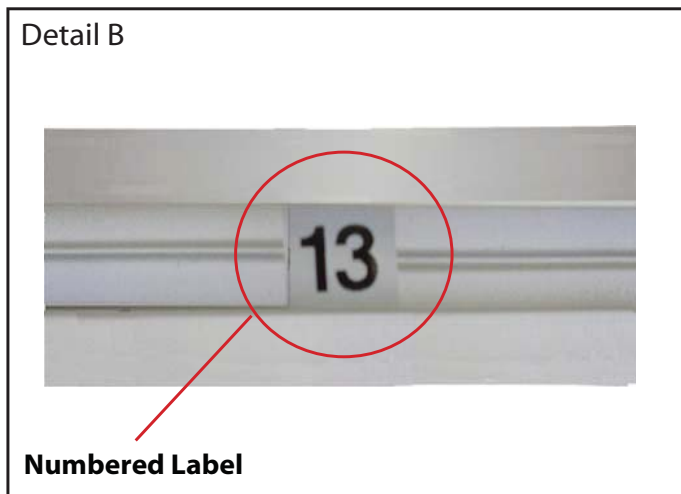


Typical Connection



Typical Connection (cont'd)

Most horizontal extrusion connections have a patented expandable lock. This lock inserts into the groove of an opposing extrusion. Tightening the lock with the Hex Key Tool expands the lock and creates a strong positive connection.



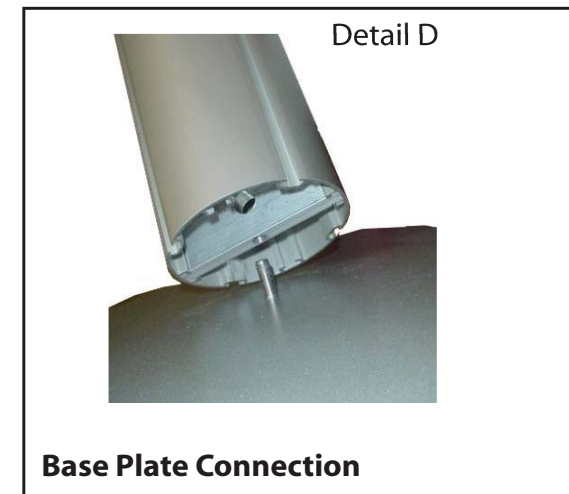
Numbered Label

Each extrusion contains a numbered label which corresponds with setup instructions. The label is located within a groove of the extrusion (when possible). With Visionary Designs the labels contain Black numbers unless otherwise specified.



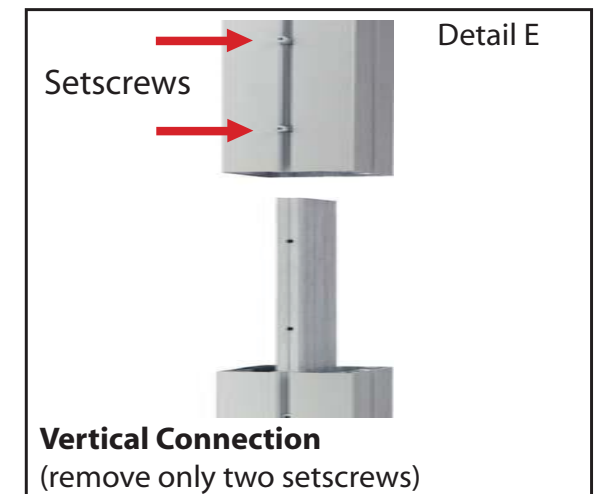
Horizontal Inline Connection (remove only one setscrew)

Remove only (1) setscrew when disassembling. Replace setscrew in extrusion after assembling it. Before packing, replace setscrew in extrusion to avoid losing it.



Base Plate Connection

Attach base plate to round or square vertical extrusion using the bolt provided. Be careful not to strip the threads.



Vertical Connection
 (remove only two setscrews)

When vertical extrusions are packed in portable cases rather than crates or tubs, they must be broken down into smaller sections which then require assembly.

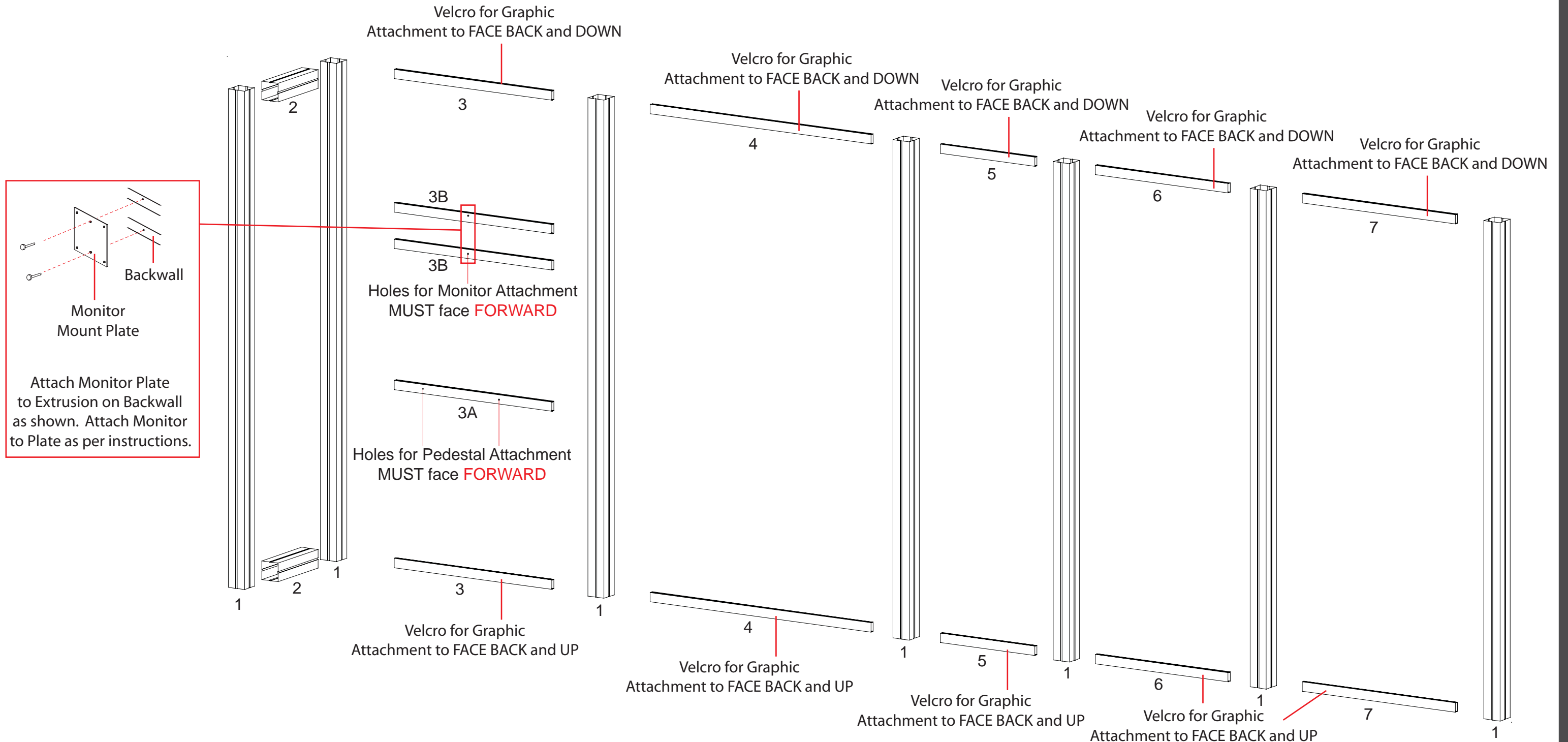
Remove only (2) setscrews when disassembling. Replace setscrews in extrusion after assembling it. Before packing, replace setscrews in extrusion to avoid losing them.

WHEN DISASSEMBLING ALUMINUM EXTRUSION, TIGHTEN ALL SETSCREWS AND LOCKS TO PREVENT LOSS DURING SHIPPING

Part Number	Qty for Step	Description
1	7	96" h Square Vertical extrusion
2	2	14" h Square Horizontal extrusion
3/3A/3B	2/1/2	35" Horizontal extrusion
4	2	49" Horizontal extrusion
5	2	21" Horizontal extrusion
6	2	29.5" Horizontal extrusion
7	2	34" Horizontal extrusion

Steps

- 1) Attach square horizontal extrusion [2] between square vertical extrusions [1] as shown below making sure that the tops and bottoms are FLUSH.
- 2) Connect horizontal extrusions [3, 3A, and 3B] between vertical extrusions [1] placing horizontal extrusions [3A] at 33" h for Pedestal attachment and [3B] at desired height for Monitor Mount.
- 3) Connect horizontal extrusions [4, 5, 6, and 7] between vertical extrusions [1] as shown below making sure that the tops and bottoms are FLUSH.



WHEN DISASSEMBLING ALUMINUM EXTRUSION, TIGHTEN ALL SETSCREWS AND LOCKS TO PREVENT LOSS DURING SHIPPING

Part Number	Qty for Step	Description
1	3	96" Square Vertical extrusion
2	2	14" Square Horizontal extrusion
8	2	72" Horizontal extrusion
9/9A/9B	2/1/2	34" Horizontal extrusion

Steps

- 1) Attach square horizontal extrusion [2] between square vertical extrusions [1] as shown below making sure that the tops and bottoms are FLUSH.
- 2) Connect horizontal extrusions [8] between vertical extrusion [1] from previous page and vertical extrusion [1] from present page.
- 3) Connect horizontal extrusions [9, 9A, and 9B] between vertical extrusions [1] as shown below, placing horizontal extrusion [9A] at 33" h for Pedestal attachment and [9B] at desired height for Monitor Mount.

Example of Monitor Mount Plate

Connector

Insert connectors into groove of extrusion. Then attach mount by tightening screws on frontside of monitor mount as shown in illustration.

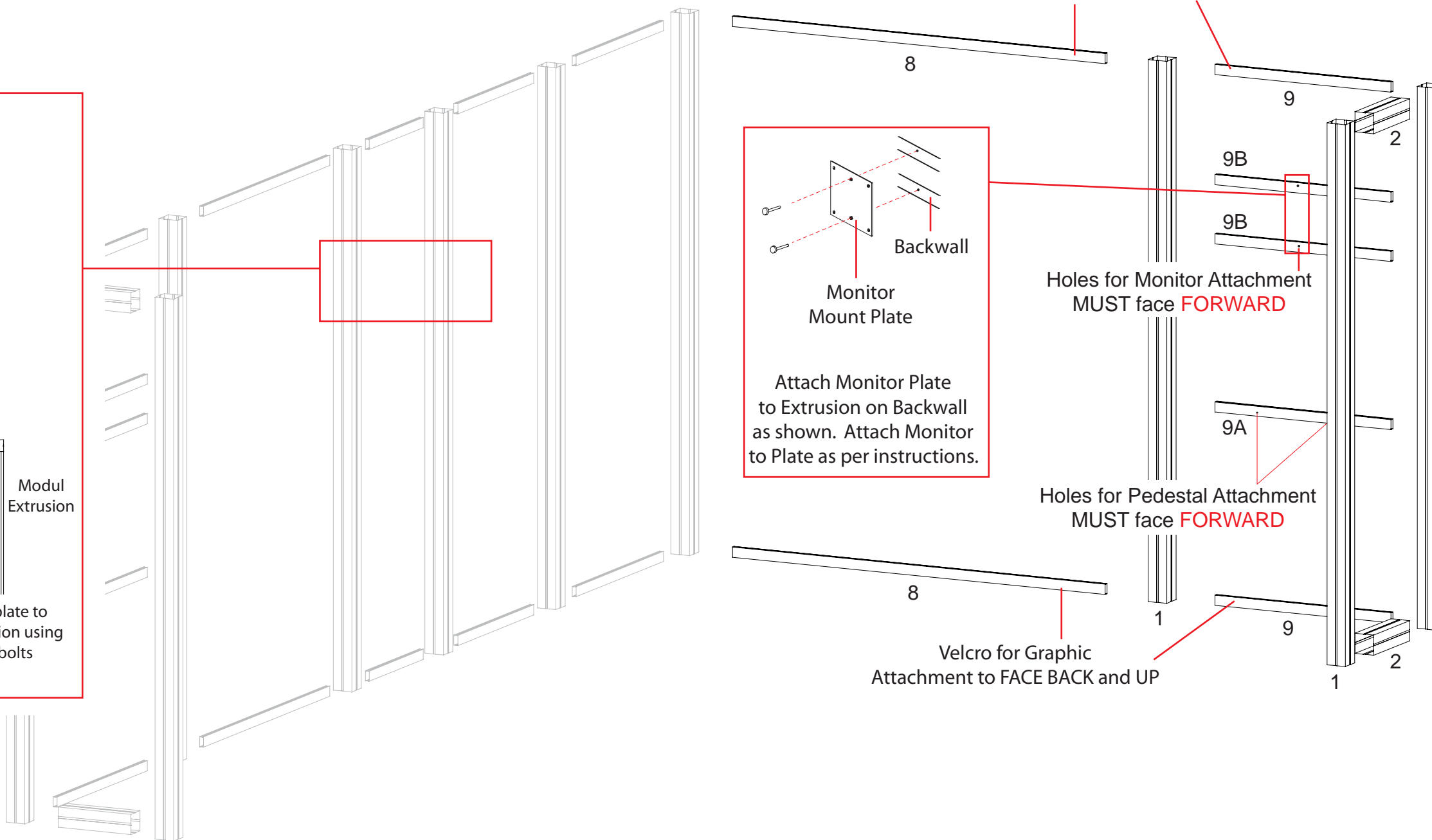
Attach monitor brackets to back of monitor.

Panel

Modul Extrusion

Attach wall plate to vertical extrusion using supplied bolts

Hook monitor brackets over top of wall plate, then secure with safety bolts to bottom of monitor brackets.

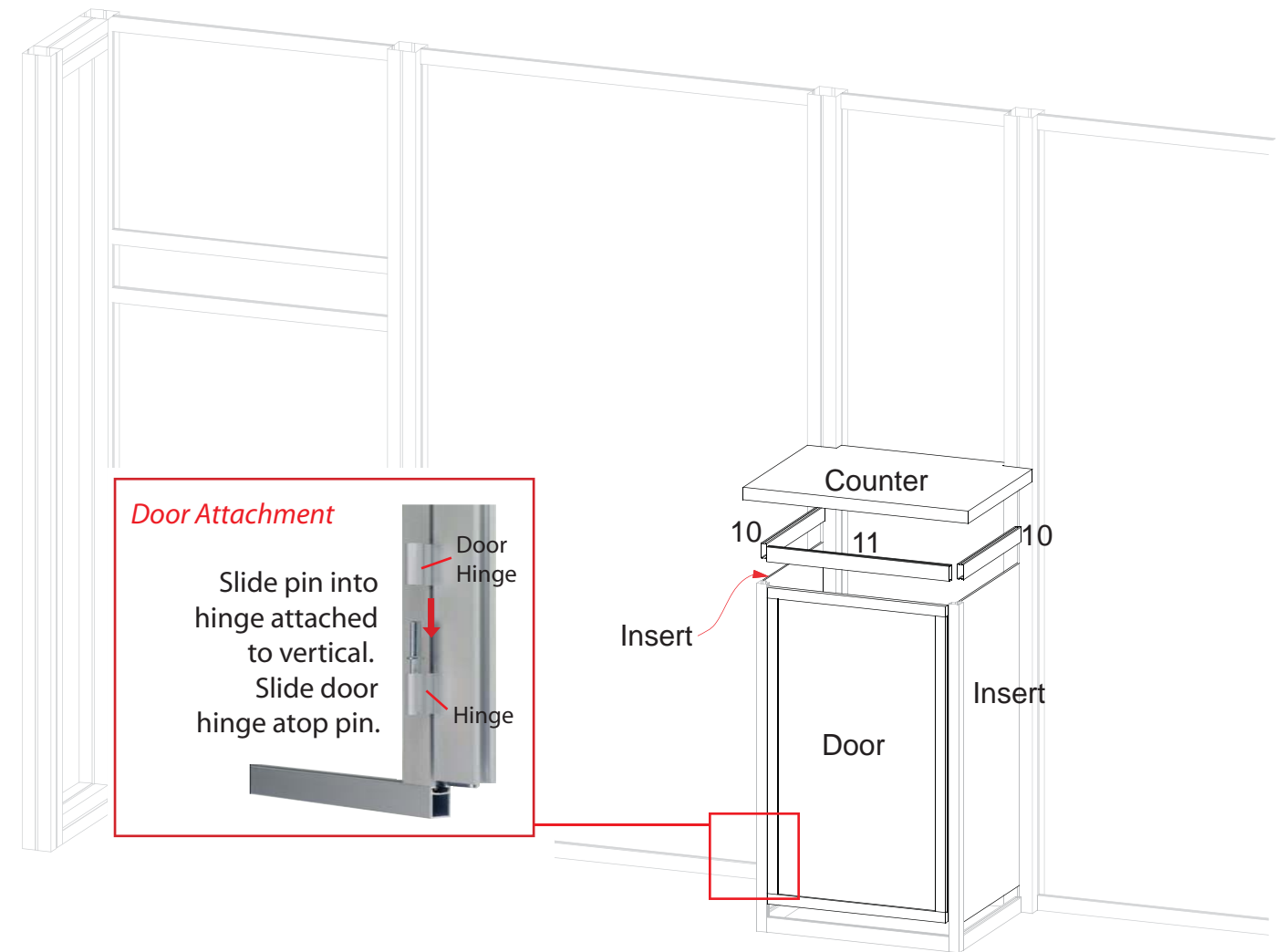


WHEN DISASSEMBLING ALUMINUM EXTRUSION, TIGHTEN ALL SETSCREWS AND LOCKS TO PREVENT LOSS DURING SHIPPING

Part Number	Qty for Step	Description
10	4	18" Horizontal extrusion
11	2	22.791" Horizontal extrusion
12	2	42"h 90° Vertical extrusion

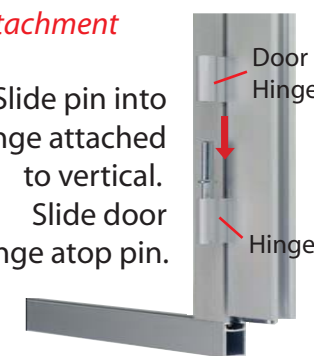
Steps

- 1) Connect lower horizontal extrusions [10] between vertical extrusions [1] from previous pages and vertical extrusions [12] as shown below.
- 2) Connect lower horizontal extrusion [11] between vertical extrusions [12].
- 3) Place inserts and Door as shown.
- 4) Connect upper horizontal extrusions [10 and 11] between verticals then atop inserts and door as shown.
- 5) Place Counter atop assembled Pedestal.



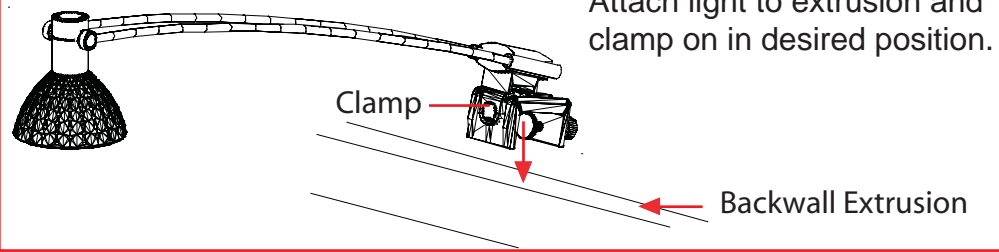
Door Attachment

Slide pin into hinge attached to vertical.
Slide door hinge atop pin.

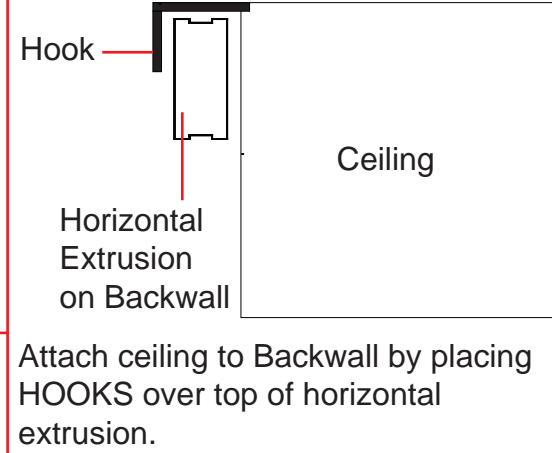


WHEN DISASSEMBLING ALUMINUM EXTRUSION, TIGHTEN ALL SETSCREWS AND LOCKS TO PREVENT LOSS DURING SHIPPING

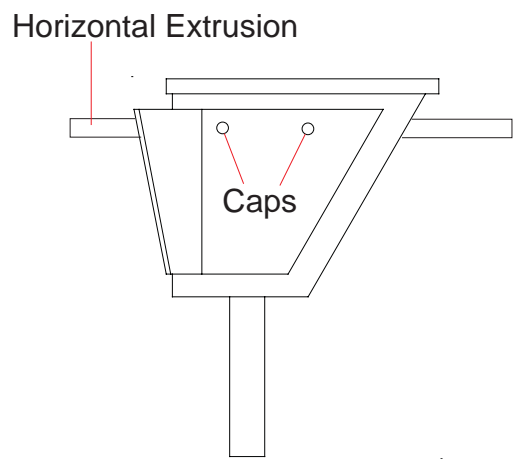
Light Connection



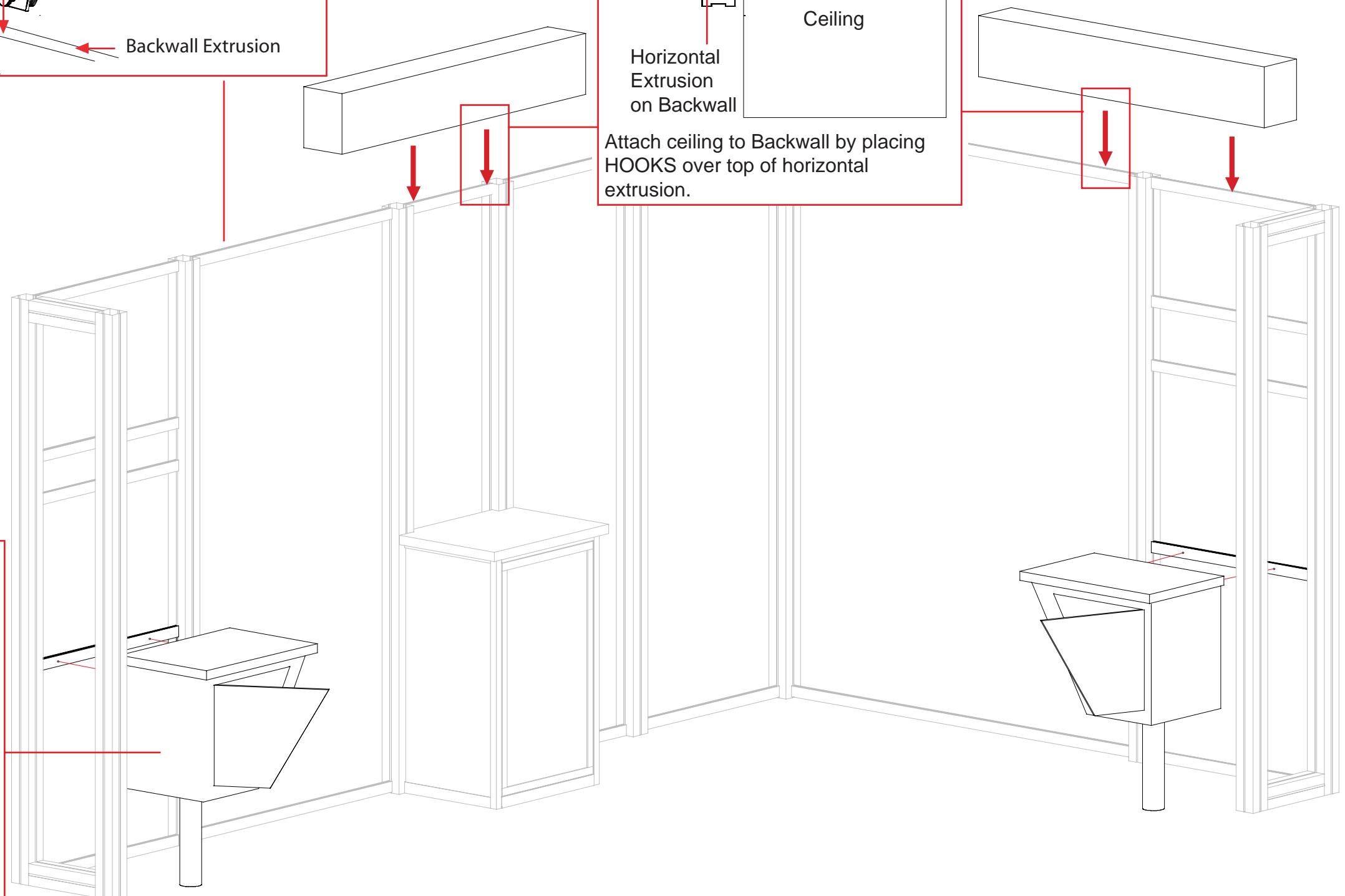
Side View of Custom Ceiling Attachment



Counter Attachment



Using the door opening secure Pedestal to the Backwall extrusion using the supplied Hardware Caps.

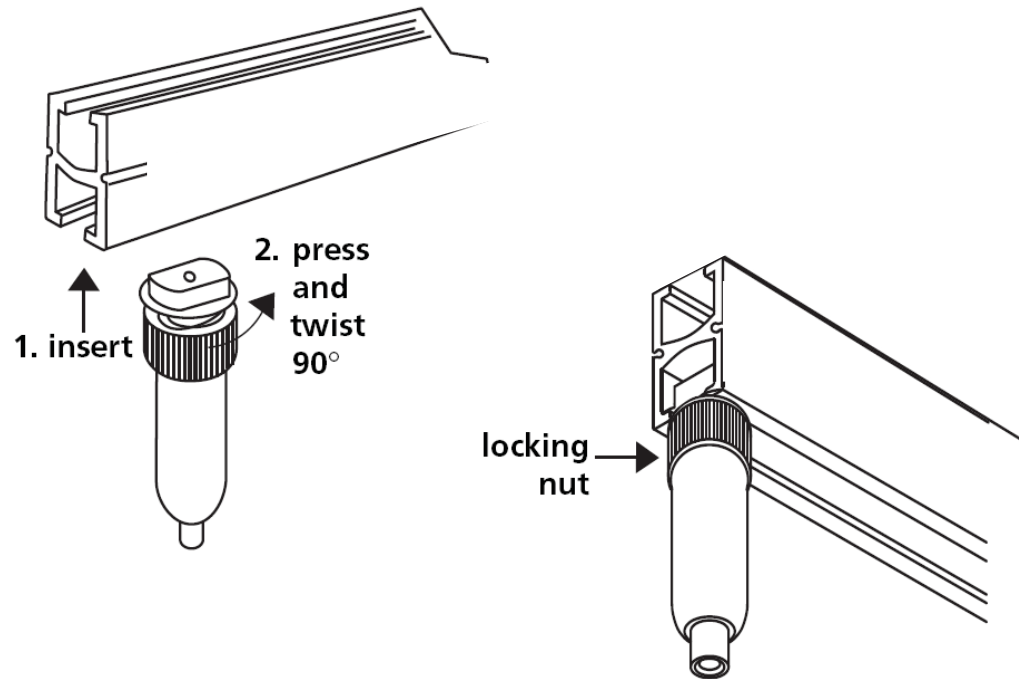


WHEN DISASSEMBLING ALUMINUM EXTRUSION, TIGHTEN ALL SETSCREWS AND LOCKS TO PREVENT LOSS DURING SHIPPING

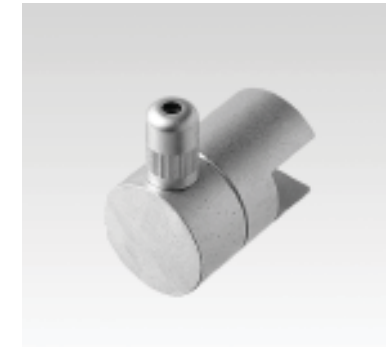
Step 1:
 To install the fixed clips, align properly, insert in extrusion, press and twist 90°, then tighten locking nut.
 To remove, loosen locking nut, and slid clip in rail. Tighten nut.



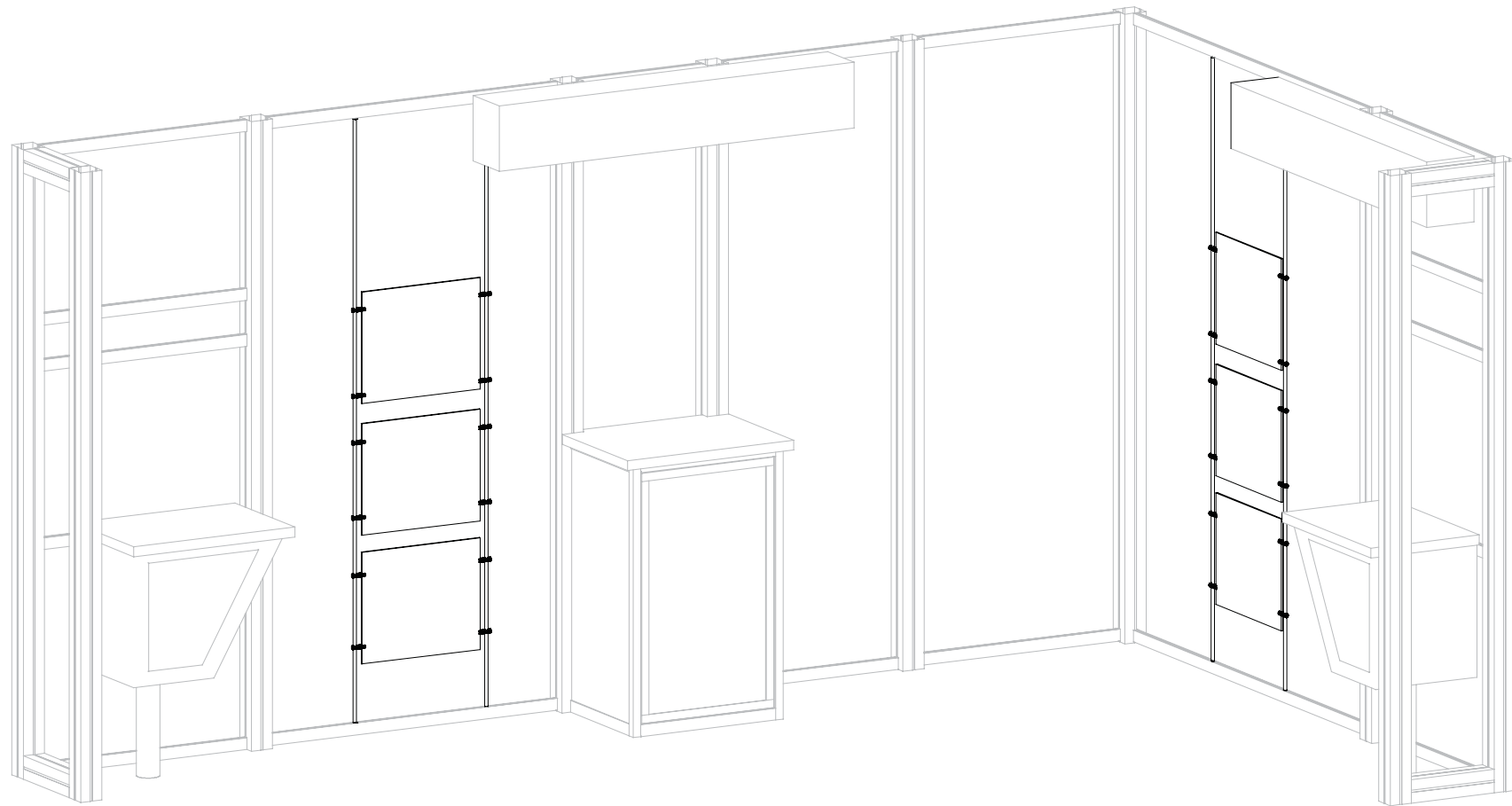
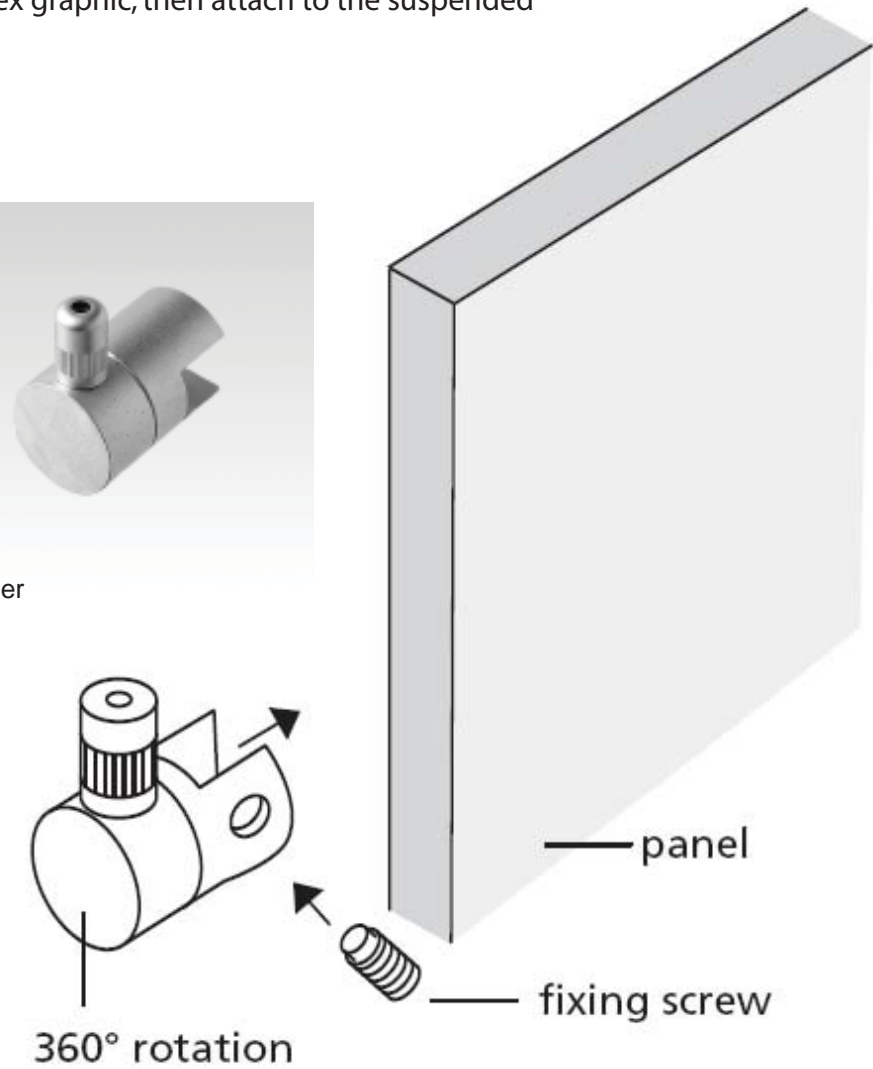
Fixed Rail Clip



Step 2:
 Clear pad should go on to the front of the plex graphic between the the gripper and the graphic. Attach the gripper to the plex graphic, then attach to the suspended cable



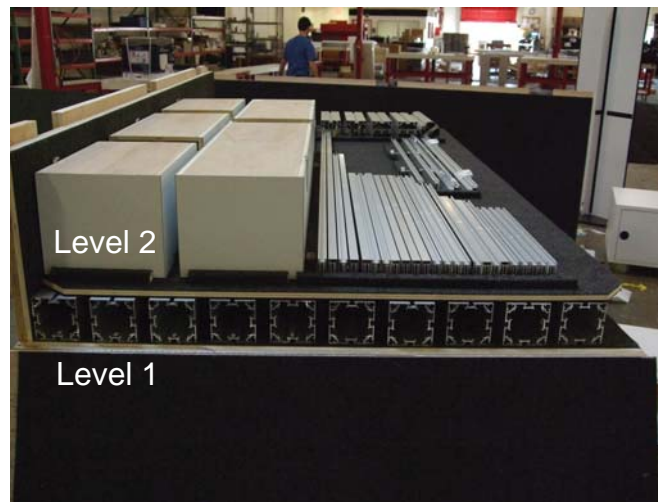
Gripper



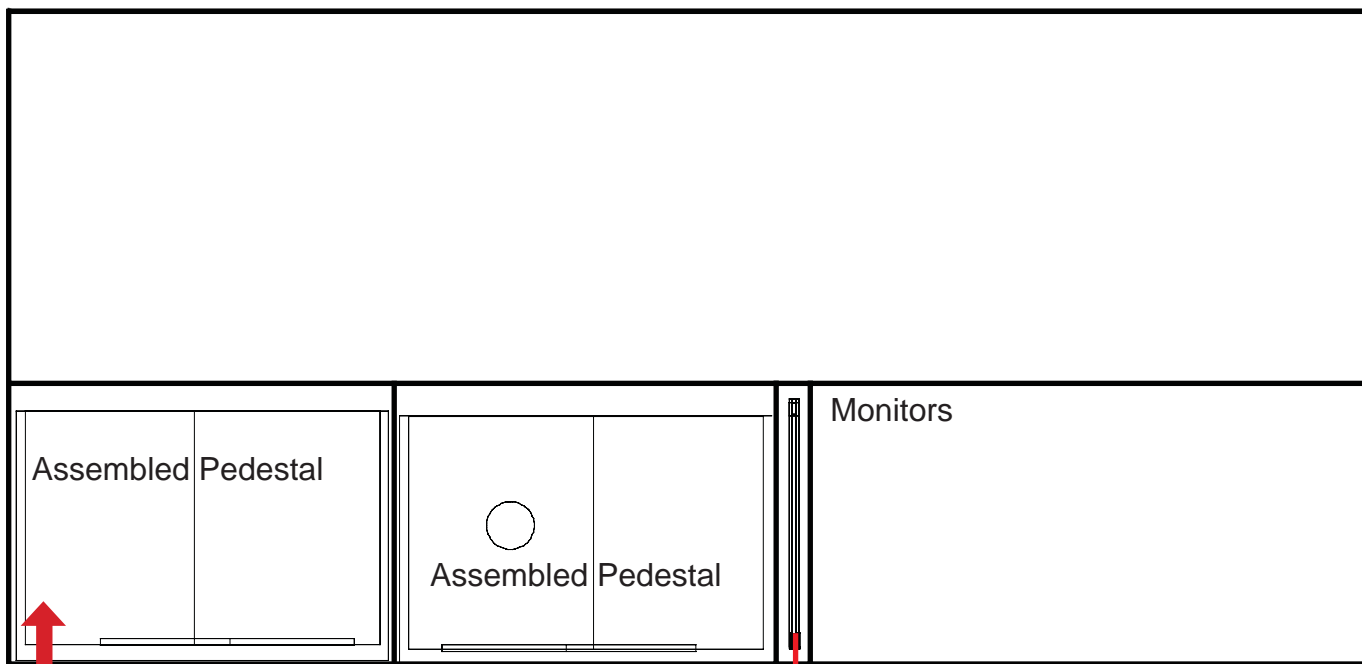
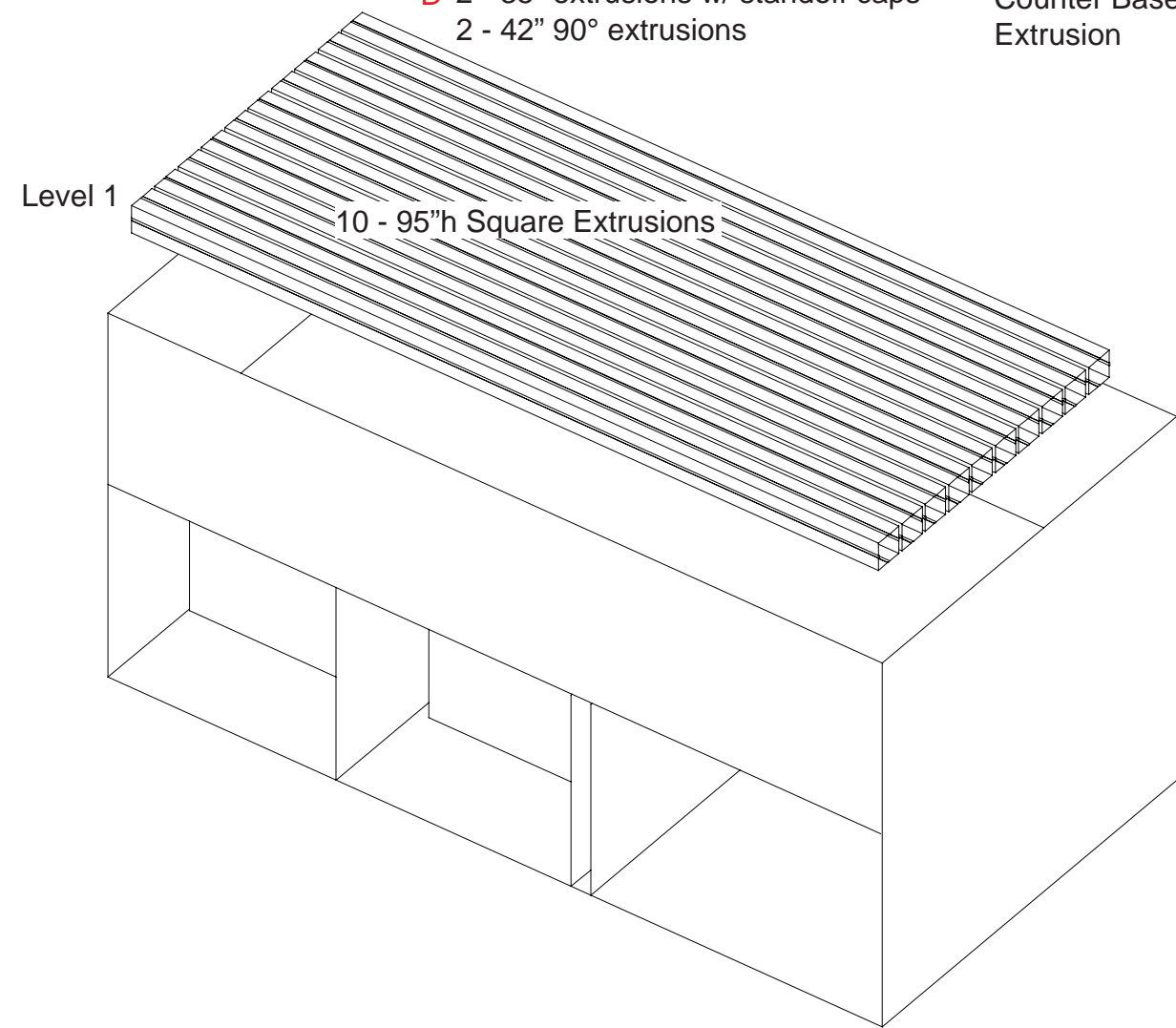
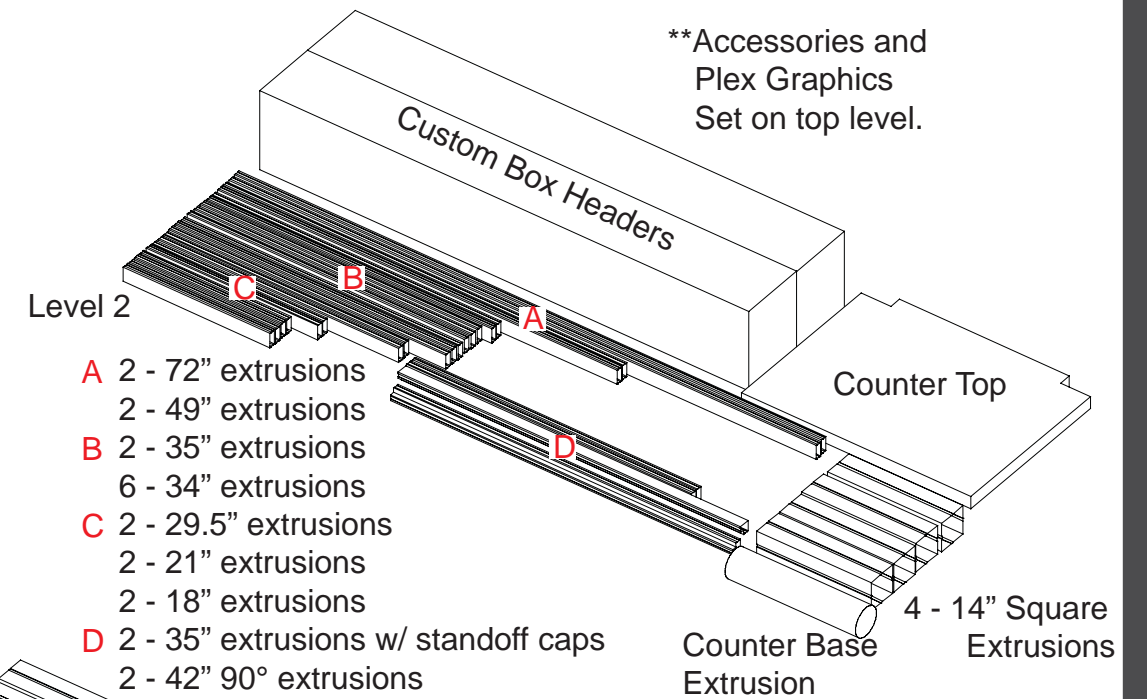
WHEN DISASSEMBLING ALUMINUM EXTRUSION, TIGHTEN ALL SETSCREWS AND LOCKS TO PREVENT LOSS DURING SHIPPING



Front View of Crate



Side View of Crate



Additional box sets in front of Pedestal as per photo.

Assembled Pedestal Door

WHEN DISASSEMBLING ALUMINUM EXTRUSION, TIGHTEN ALL SETSCREWS AND LOCKS TO PREVENT LOSS DURING SHIPPING