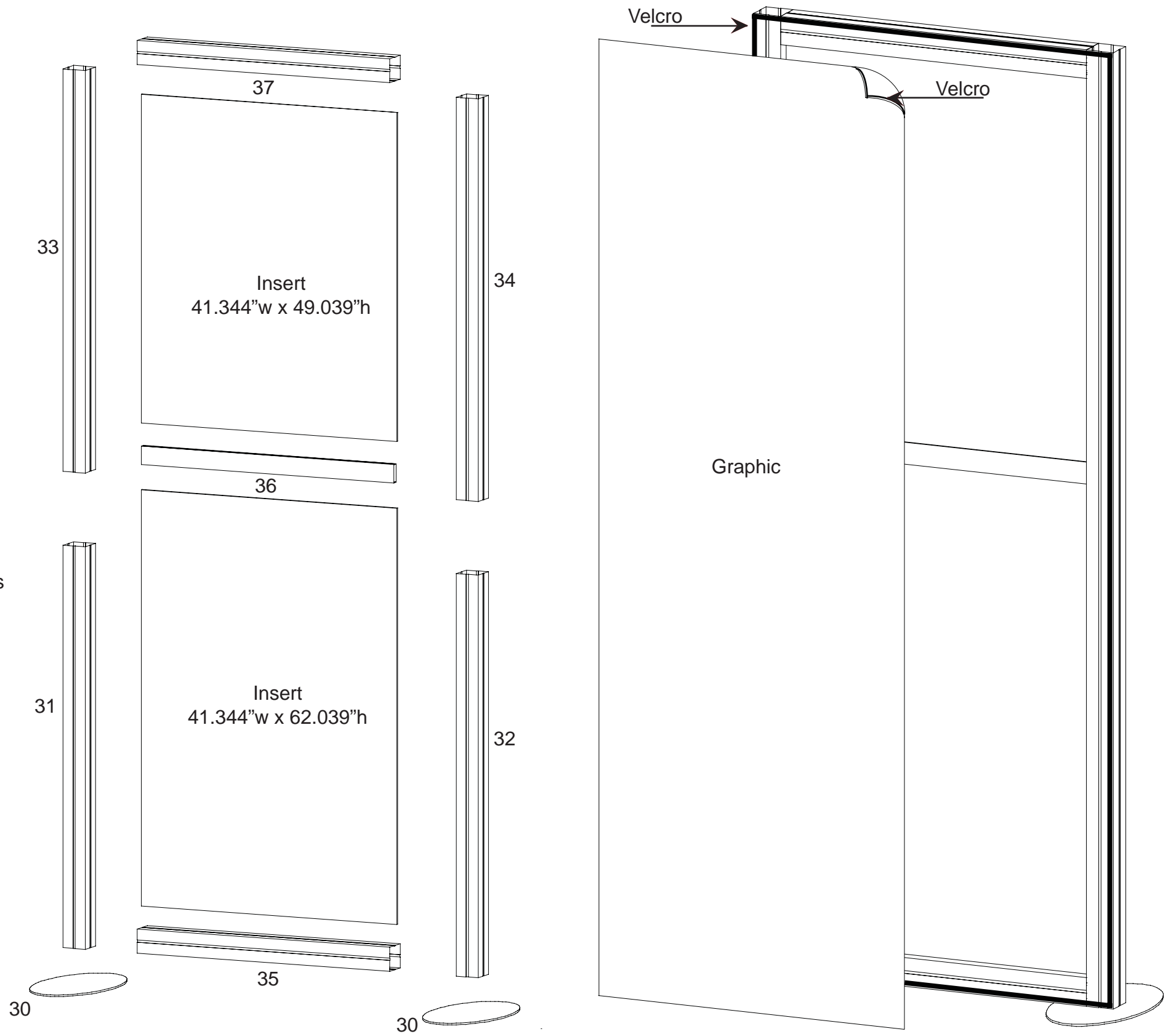




| Part Number | Qty for Step | Description |
|-------------|--------------|-------------------------------------|
| 30 | 2 | Base Plates |
| 31 | 1 | 60"h Lower Vertical extrusion |
| 32 | 1 | 60"h Lower Vertical extrusion |
| 33 | 1 | 60"h Upper Vertical extrusion |
| 34 | 1 | 60"h Upper Vertical extrusion |
| 35 | 1 | 40.834" Lower Horizontal extrusion |
| 36 | 1 | 40.834" Middle Horizontal extrusion |
| 37 | 1 | 40.834" Upper Horizontal extrusion |

Steps

- 1) Connect vertical extrusion [33 to 31 and 34 and 32].
- 2) Connect vertical assemblies to base plates [30], refer to Detail D on General Info Page.
- 3) Connect horizontal extrusions [25, 36, and 37] between vertical assemblies [31/33 and 32/34] placing inserts as shown.
- 4) Attach Monitor Mount to middle horizontal.
- 5) Attach Graphic Panel to Backside of Frame as shown.



WHEN DISASSEMBLING ALUMINUM EXTRUSION, TIGHTEN ALL SETSCREWS AND LOCKS TO PREVENT LOSS DURING SHIPPING

visionary™ DESIGNS

Using Your Setup Instructions

The Visionary Designs Setup Instructions are created specifically for your configuration. They are laid out sequentially, including an exploded view of the entire display, and then a logical series of detailed steps to assemble the main structure and components. We encourage you to study the instructions **before** attempting to assemble your exhibit.

Each page reminds you to tighten the setscrews after disassembling your exhibit to prevent loss of the locks and setscrews (see below in RED). This is **VERY IMPORTANT**.

Cleaning and Packing Your Display

- 1) Use care when cleaning aluminum extrusion or acrylic inserts. Use only non-abrasive cleaners.
- 2) When cleaning laminate inserts or countertops, use mild cleansers and a soft material such as cotton.
- 3) Keep all display components away from extreme heat and long exposure to sunlight to avoid warping and fading.
- 4) Retain all packing material. It will make re-packing much easier and will reduce the likelihood of shipping damage.



The Tool

Most Visionary Designs exhibits can be assembled with the supplied Hex Key Tool. Occasionally, a flat head screwdriver may be required.



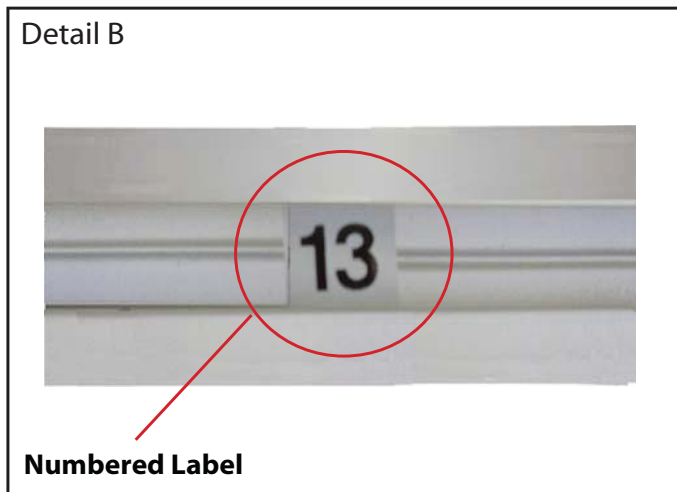
Detail A

Typical Connection



Typical Connection (cont'd)

Most horizontal extrusion connections have a patented expandable lock. This lock inserts into the groove of an opposing extrusion. Tightening the lock with the Hex Key Tool expands the lock and creates a strong positive connection.



Detail B

Numbered Label

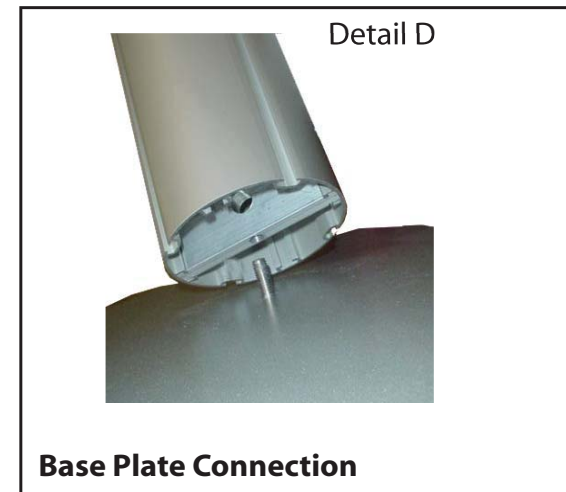
Each extrusion contains a numbered label which corresponds with setup instructions. The label is located within a groove of the extrusion (when possible). With Visionary Designs the labels contain Black numbers unless otherwise specified.



Detail C

Horizontal Inline Connection (remove only one setscrew)

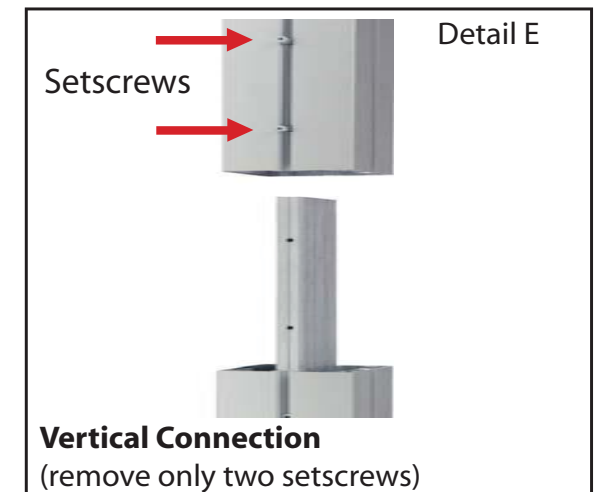
Remove only (1) setscrew when disassembling. Replace setscrew in extrusion after assembling it. Before packing, replace setscrew in extrusion to avoid losing it.



Detail D

Base Plate Connection

Attach base plate to round or square vertical extrusion using the bolt provided. Be careful not to strip the threads.



Detail E

Vertical Connection
(remove only two setscrews)

When vertical extrusions are packed in portable cases rather than crates or tubs, they must be broken down into smaller sections which then require assembly.

Remove only (2) setscrews when disassembling. Replace setscrews in extrusion after assembling it. Before packing, replace setscrews in extrusion to avoid losing them.

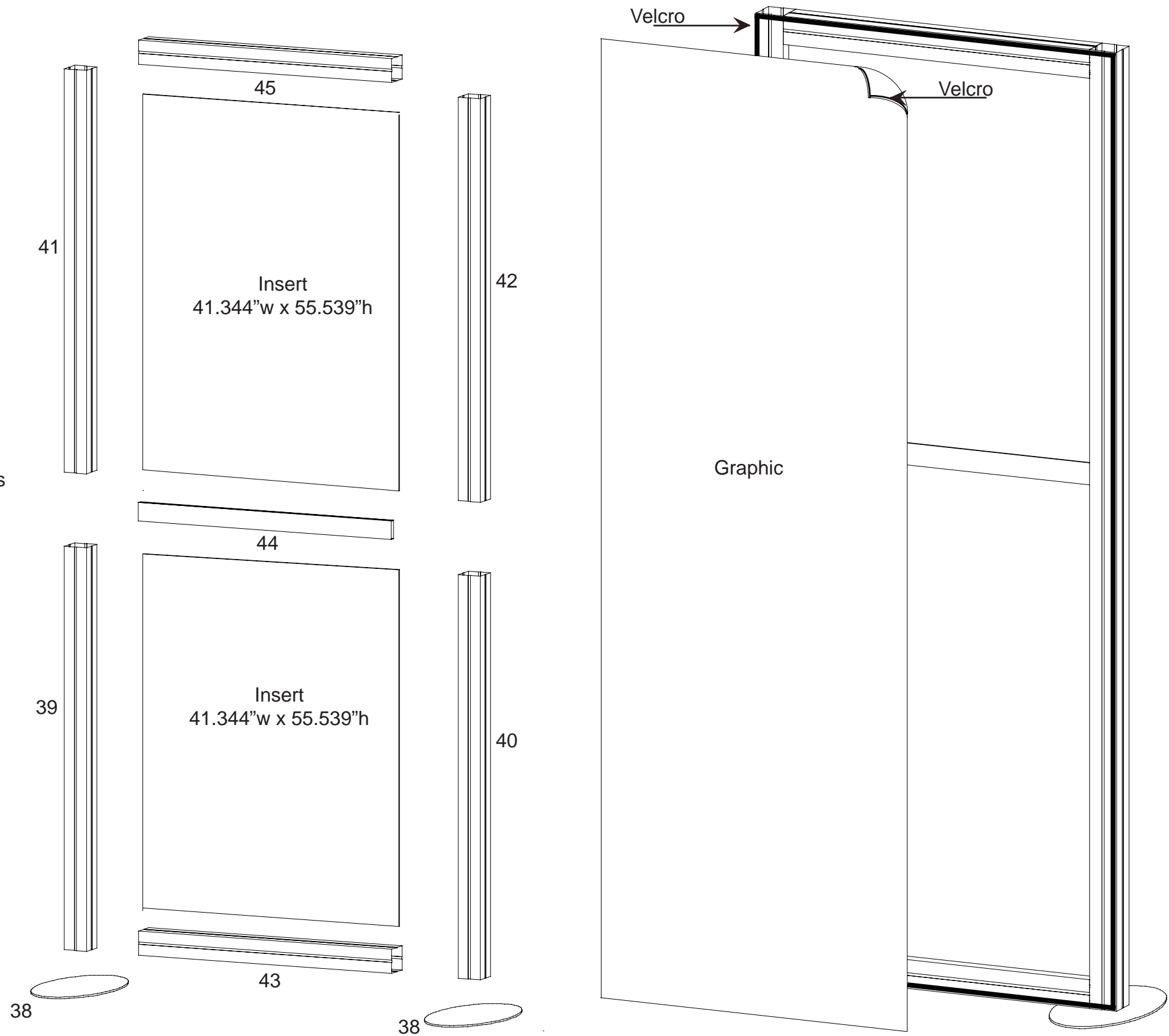
WHEN DISASSEMBLING ALUMINUM EXTRUSION, TIGHTEN ALL SETSCREWS AND LOCKS TO PREVENT LOSS DURING SHIPPING



| Part Number | Qty for Step | Description |
|-------------|--------------|-------------------------------------|
| 38 | 2 | Base Plates |
| 39 | 1 | 60"h Lower Vertical extrusion |
| 40 | 1 | 60"h Lower Vertical extrusion |
| 41 | 1 | 60"h Upper Vertical extrusion |
| 42 | 1 | 60"h Upper Vertical extrusion |
| 43 | 1 | 40.834" Lower Horizontal extrusion |
| 44 | 1 | 40.834" Middle Horizontal extrusion |
| 45 | 1 | 40.834" Upper Horizontal extrusion |

Steps

- 1) Connect vertical extrusion [41 to 39 and 42 and 40].
- 2) Connect vertical assemblies to base plates [38], refer to Detail D on General Info Page.
- 3) Connect horizontal extrusions [43, 44, and 45] between vertical assemblies [39/41 and 40/42] placing inserts as shown.
- 4) Attach Graphic Panel to Backside of Frame as shown.



WHEN DISASSEMBLING ALUMINUM EXTRUSION, TIGHTEN ALL SETSCREWS AND LOCKS TO PREVENT LOSS DURING SHIPPING

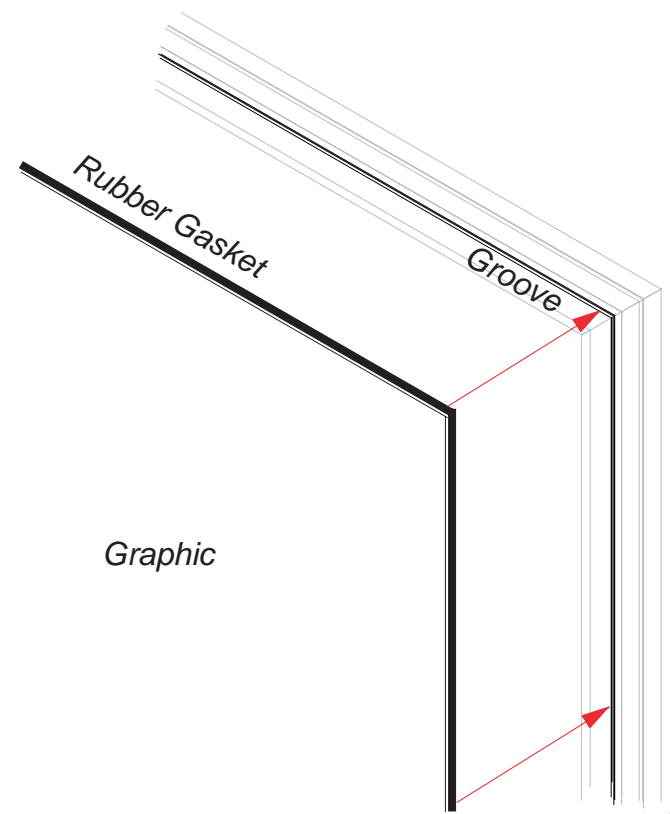
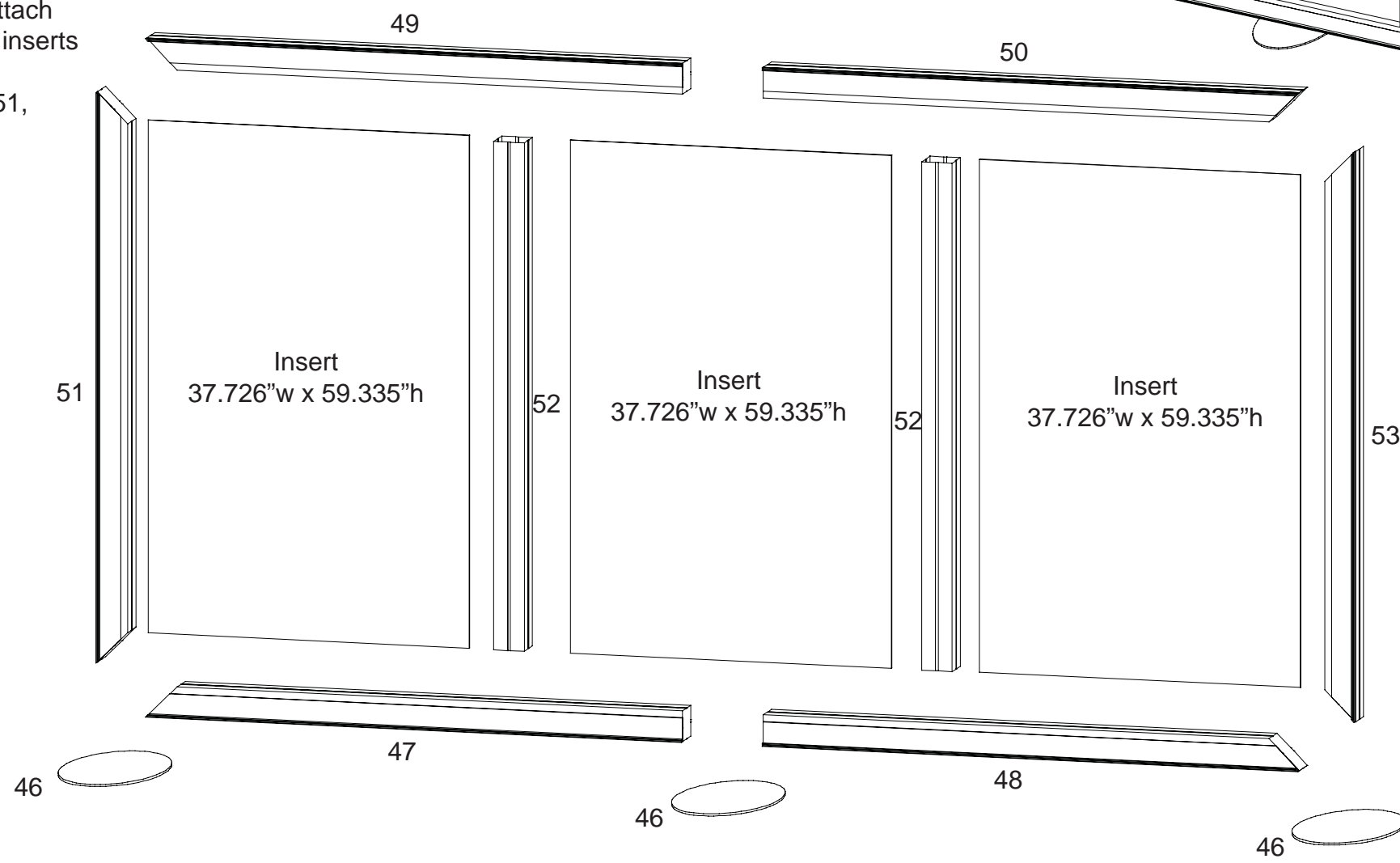
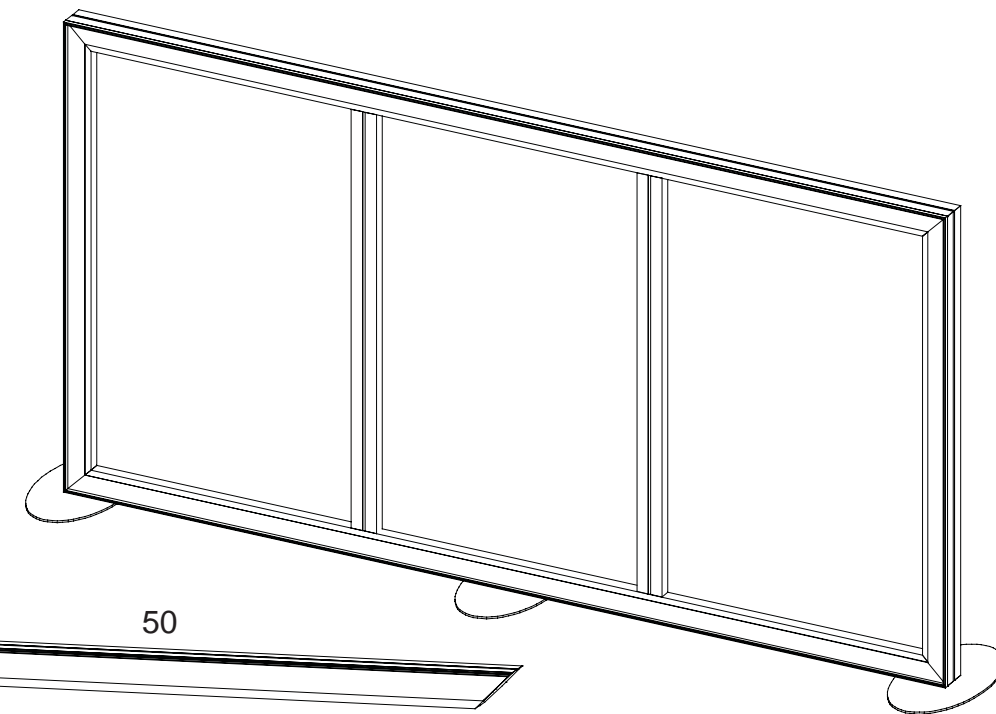


866.652.2100

| Part Number | Qty for Step | Description |
|-------------|--------------|--|
| 46 | 3 | Base Plates |
| 47 | 1 | 63" h Lower Tapered Horizontal extrusion |
| 48 | 1 | 63" h Lower Tapered Horizontal extrusion |
| 49 | 1 | 63" h Upper Tapered Horizontal extrusion |
| 50 | 1 | 63" h Upper Tapered Horizontal extrusion |
| 51 | 1 | 66" h Tapered Vertical extrusion |
| 52 | 2 | 66" h Middle Vertical extrusion |
| 53 | 1 | 66" h Tapered Vertical extrusion |

Steps (NOTE: Make sure that extrusion with groove for Graphic FACES in the same direction.)

- 1) Connect horizontal extrusion [47 to 48] and [49 to 50].
- 2) Attach vertical extrusions [51 to 47 and 53 to 46]. Loosely attach vertical extrusions [52] to horizontal assembly [47/48], place inserts as shown and tighten extrusions [52] to secure into place.
- 3) Attach horizontal assembly [49/50] atop vertical extrusions [51, 52, and 53] as shown.
- 4) Attach base plates [46] to bottom of assembled wall.
- 5) Apply graphics to wall by sliding rubber gasket into groove of outer most section of metal frame.



WHEN DISASSEMBLING ALUMINUM EXTRUSION, TIGHTEN ALL SETSCREWS AND LOCKS TO PREVENT LOSS DURING SHIPPING

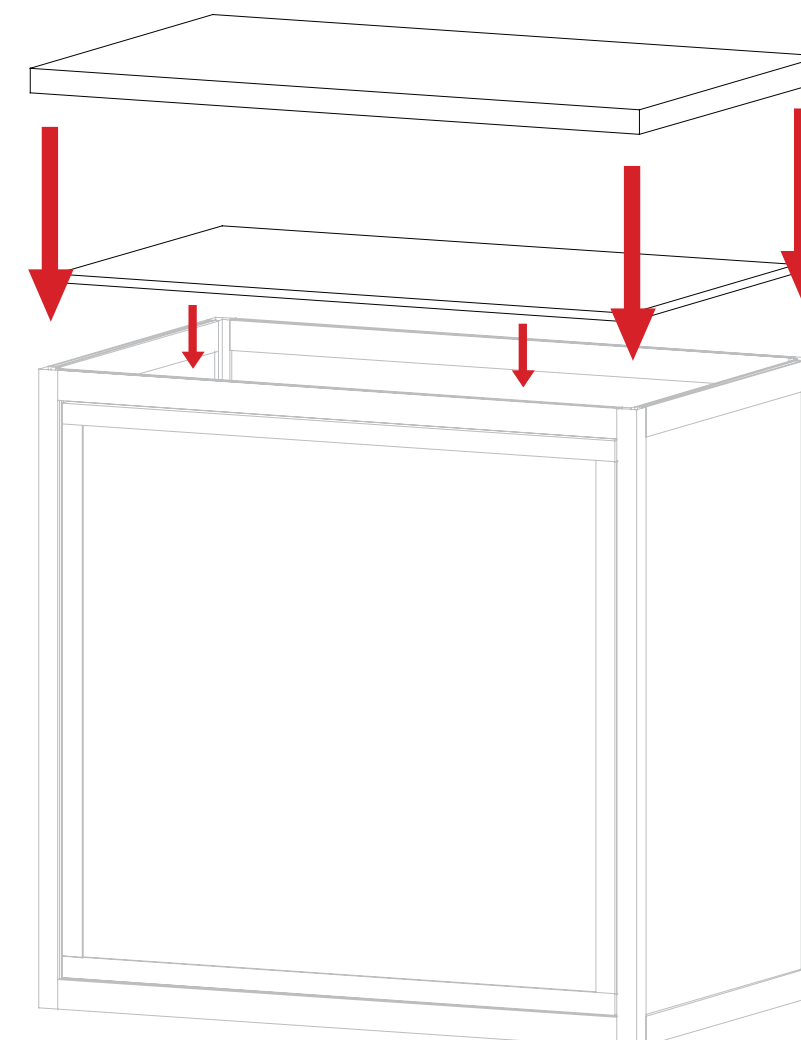
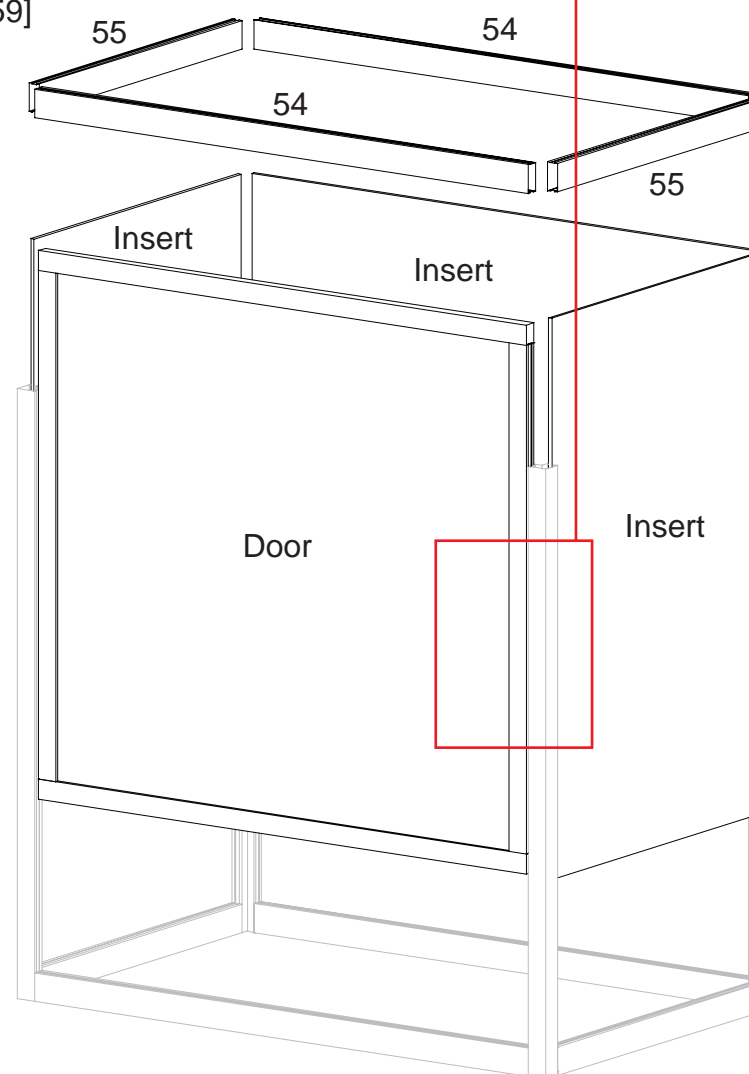
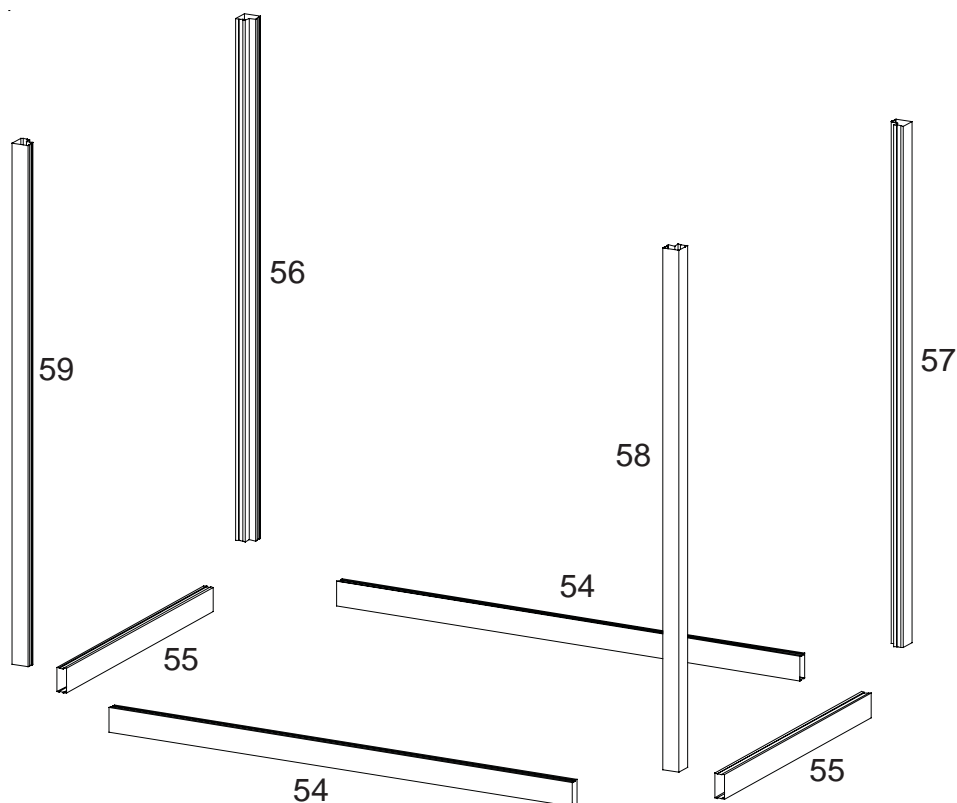
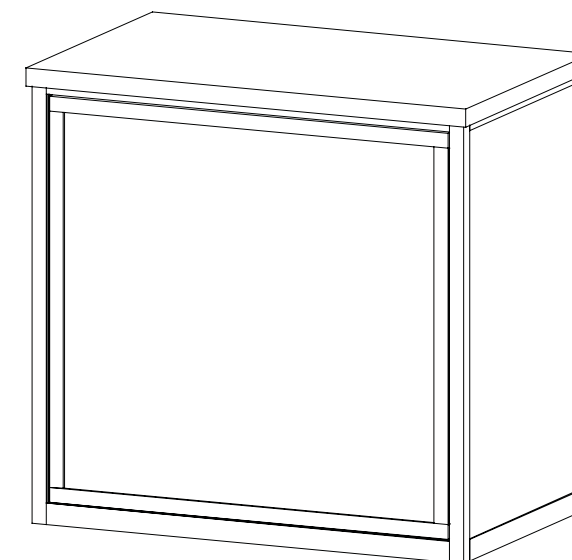
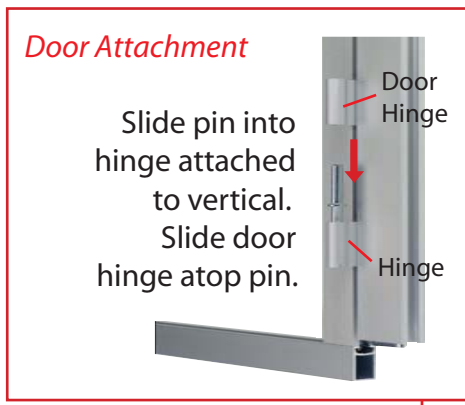


866.652.2100

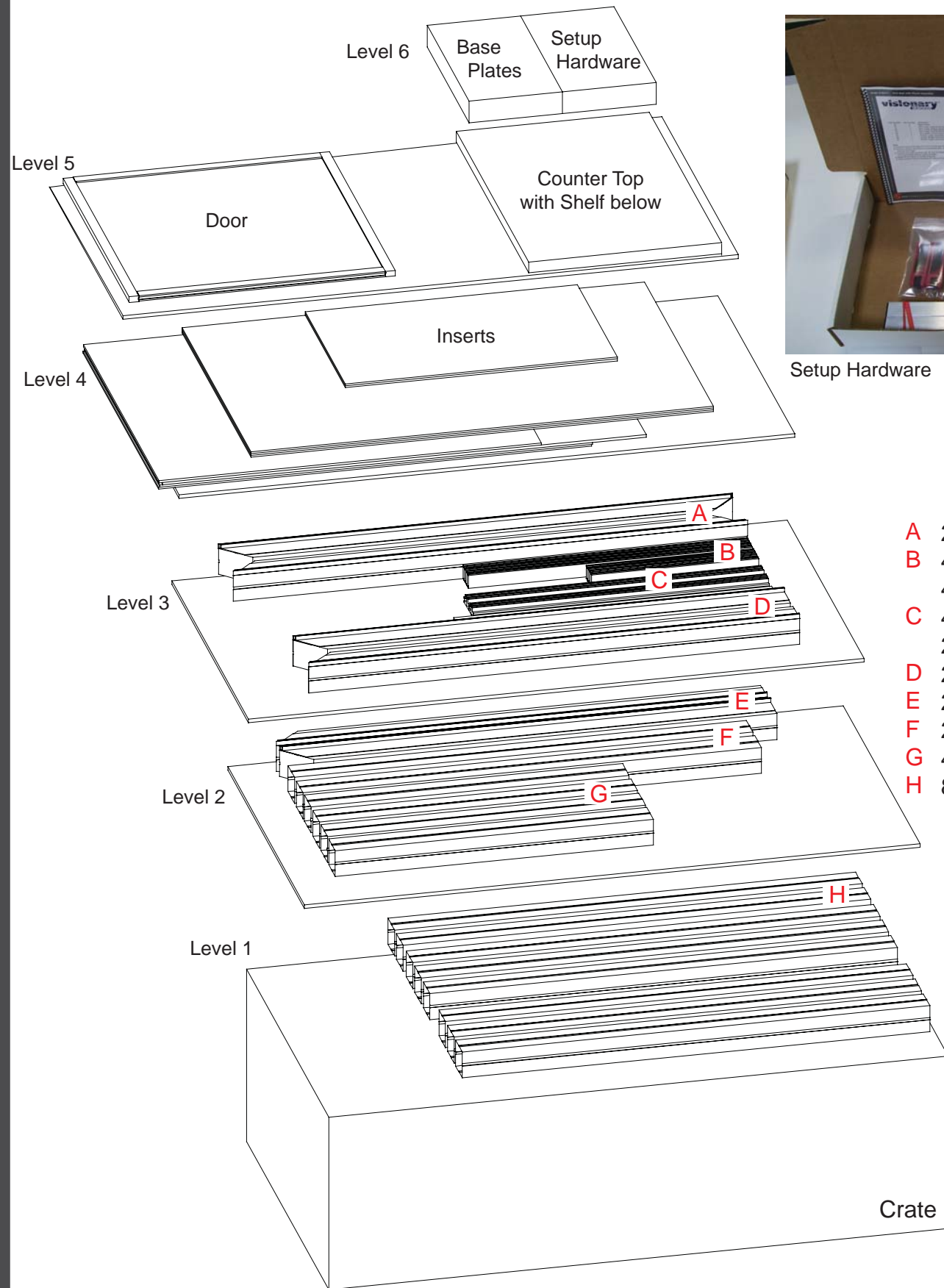
| Part Number | Qty for Step | Description |
|-------------|--------------|---|
| 54 | 4 | 36.46" w Horizontal extrusion |
| 55 | 4 | 21.46" w Horizontal extrusion |
| 56 | 1 | 38" h Vertical extrusion |
| 57 | 1 | 38" h Vertical extrusion |
| 58 | 1 | 38" h Vertical extrusion w/ Door Hardware |
| 59 | 1 | 38" h Vertical extrusion w/ Door Hardware |

Steps:

- 1) Connect horizontal extrusions [54 and 55] between vertical extrusions [56 thru 59] as shown below.
- 2) Place inserts and door as shown.
- 3) Connect upper horizontals [54 and 55] between vertical extrusions [56 thru 59] and atop inserts.
- 4) Attach velcroed counter supports inside of assembled pedestal to already attached loop velcro, place internal shelf atop supports.
- 5) Place counter atop assembled pedestal.



WHEN DISASSEMBLING ALUMINUM EXTRUSION, TIGHTEN ALL SETSCREWS AND LOCKS TO PREVENT LOSS DURING SHIPPING

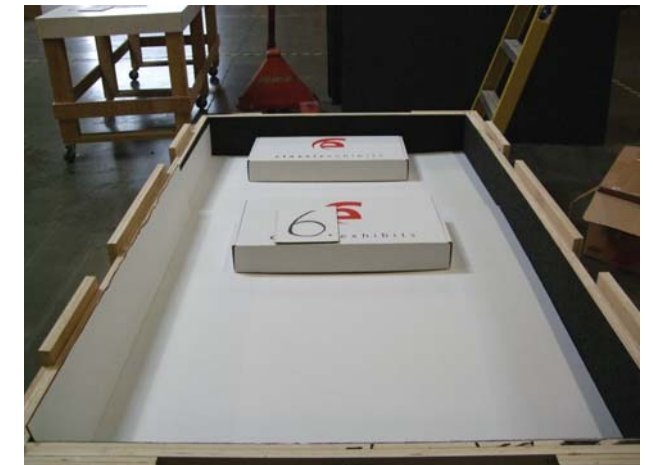


Setup Hardware

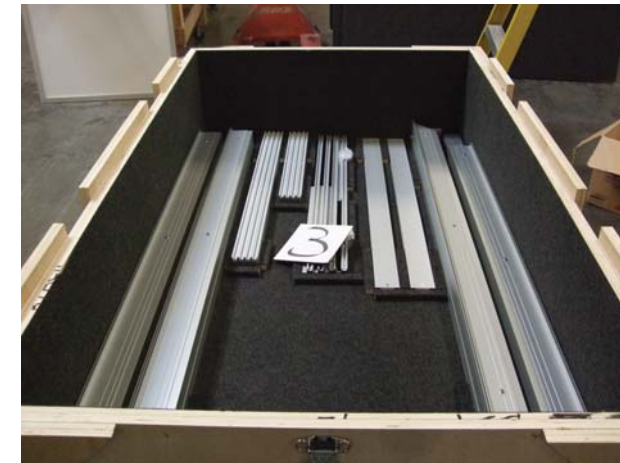
- A 2 - 66" Square Tapered extrusion
- B 4 - 36.46" extrusion
- 4 - 21.46" extrusion
- C 4 - 38" 90° extrusion
- 2 - 40.834" extrusion
- D 2 - 63" Square Tapered extrusion
- E 2 - 63" Square Tapered extrusion
- F 2 - 58.835" Square extrusion
- G 4 - 40.834" Square extrusion
- H 8 - 60" Square extrusion



Level 5



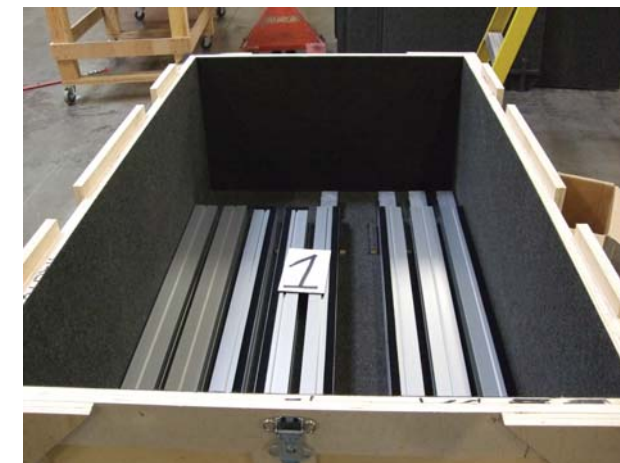
Level 6



Level 3



Level 4



Level 1



Level 2

WHEN DISASSEMBLING ALUMINUM EXTRUSION, TIGHTEN ALL SETSCREWS AND LOCKS TO PREVENT LOSS DURING SHIPPING