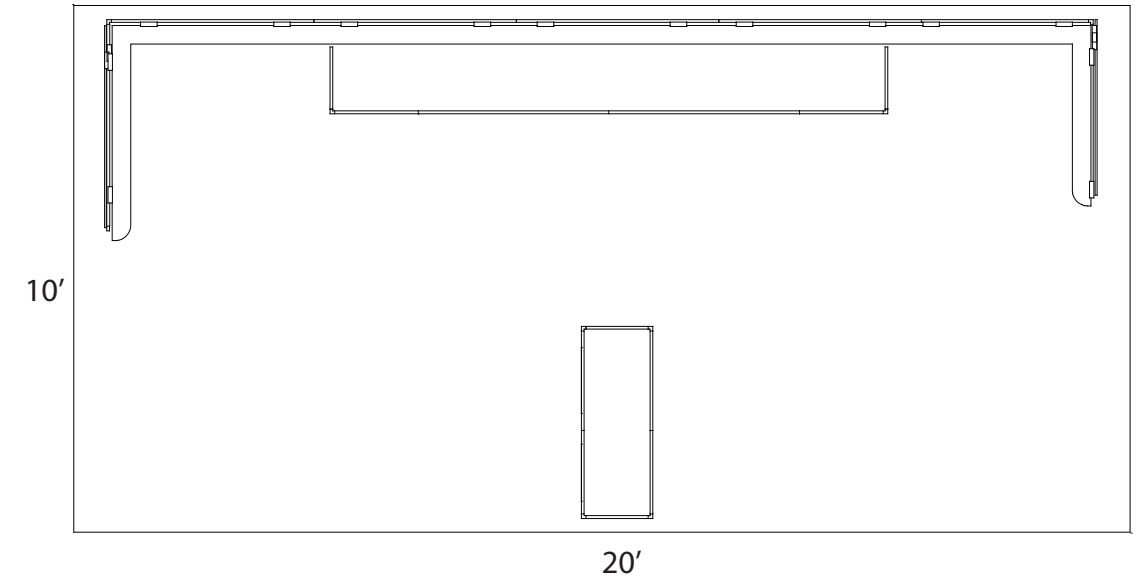
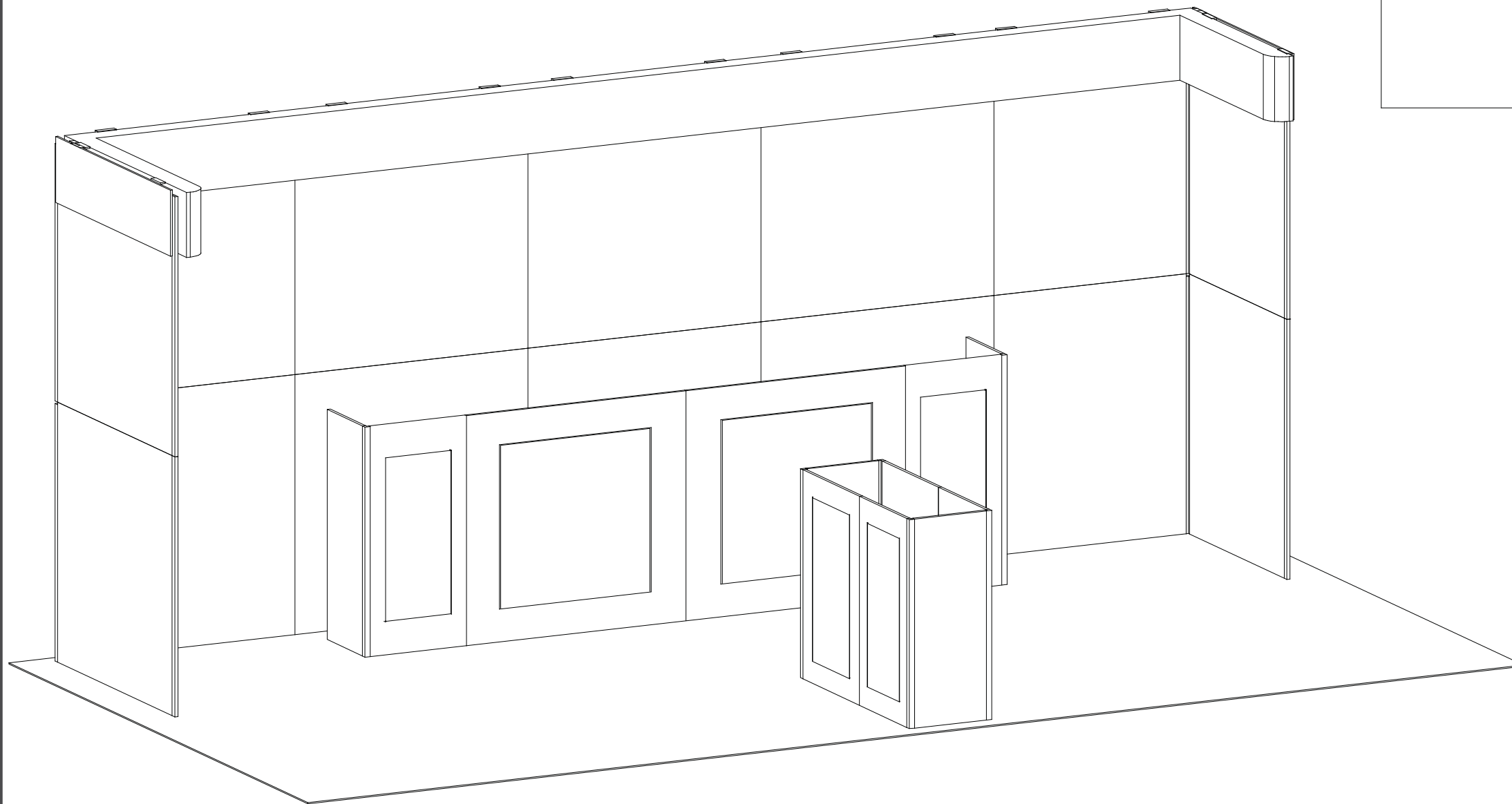


euro It | HYBRIDS



euro lt | HYBRIDS

Euro LT Hybrids General Setup Instructions

Using Your Setup Instructions

The Euro LT Hybrids Setup Instructions are created specifically for your configuration. They are laid out sequentially in levels, including exploded views, and a logical series of detailed steps to assemble the main structure and components. We encourage you to study the instructions **before** attempting to assemble your exhibit.

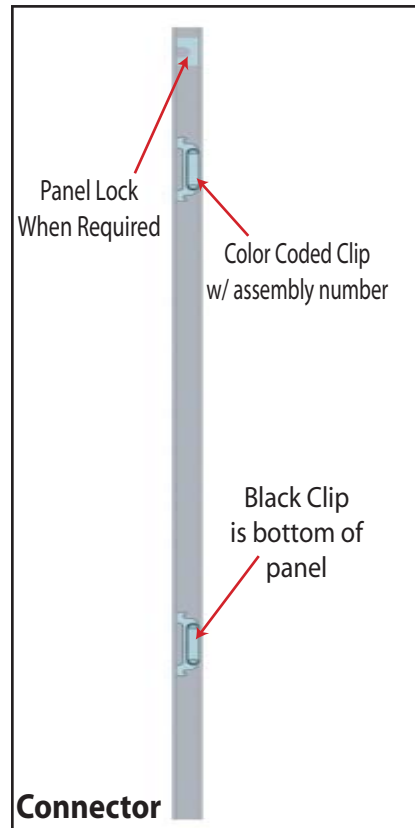
Cleaning and Packing Your Display

- 1) When cleaning laminate countertops or panels use mild cleansers and a soft material such as cotton.
- 2) Keep all display components away from extreme heat and long exposure to sunlight to avoid warping and fading.
- 3) Retain all packing material. It will make re-packing much easier and will reduce the likelihood of shipping damage.

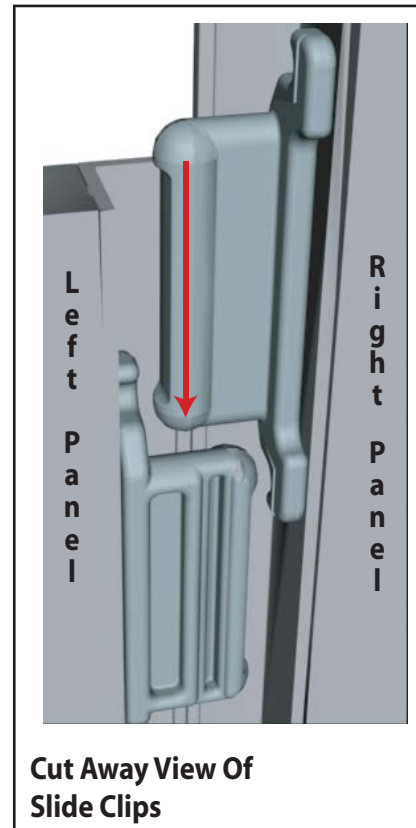
Level 1 = Blue
 Level 2 = Red
 Level 3 = Green
 Level 4 = Black

Color Code

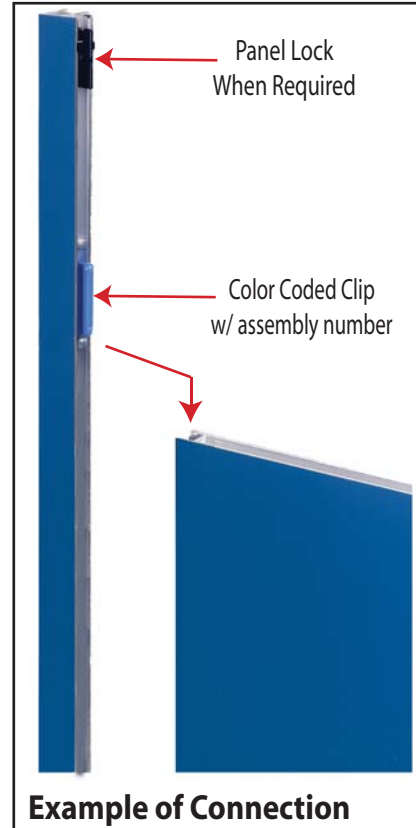
The top clip is color coded to distinguish the level. The color coded clip also contains the numbered label



Each component has 2 clips, the lower clip is ALWAYS black..



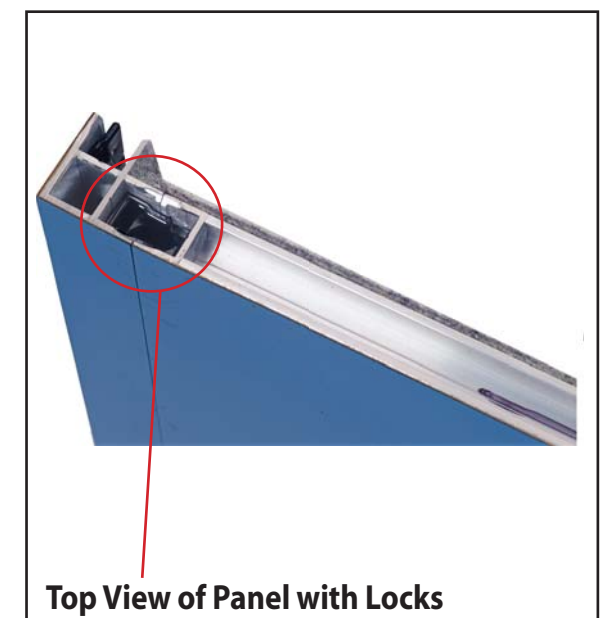
Components connect together by aligning them and sliding downward connecting clips together.



Configurations are assembled from left to right, usually starting with #1 and following the numbered sequence.



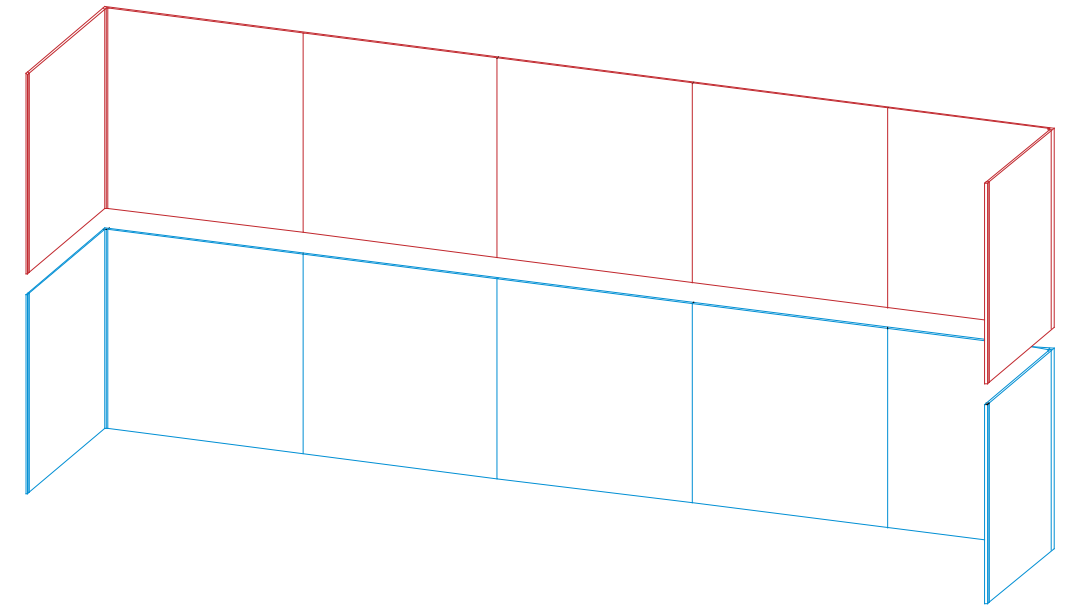
The first level of components contains panel locks that are located at the top of the panel for extra stability and a seamless connection. When disassembling panels, twist top connection slightly and lift right panel upward.



866.652.2100

Item Number	Description
1	47.5" h End Cap
2	46" w x 47.5" h Flat Panel
3	47.5" h 90° Connector
4	46" w x 47.5" h Flat Panel
5	46" w x 47.5" h Flat Panel
6	46" w x 47.5" h Flat Panel
7	46" w x 47.5" h Flat Panel
8	38" w x 47.5" h Flat Panel
9	47.5" h 90° Connector
10	38" w x 47.5" h Flat Panel
11	47.5" h End Cap

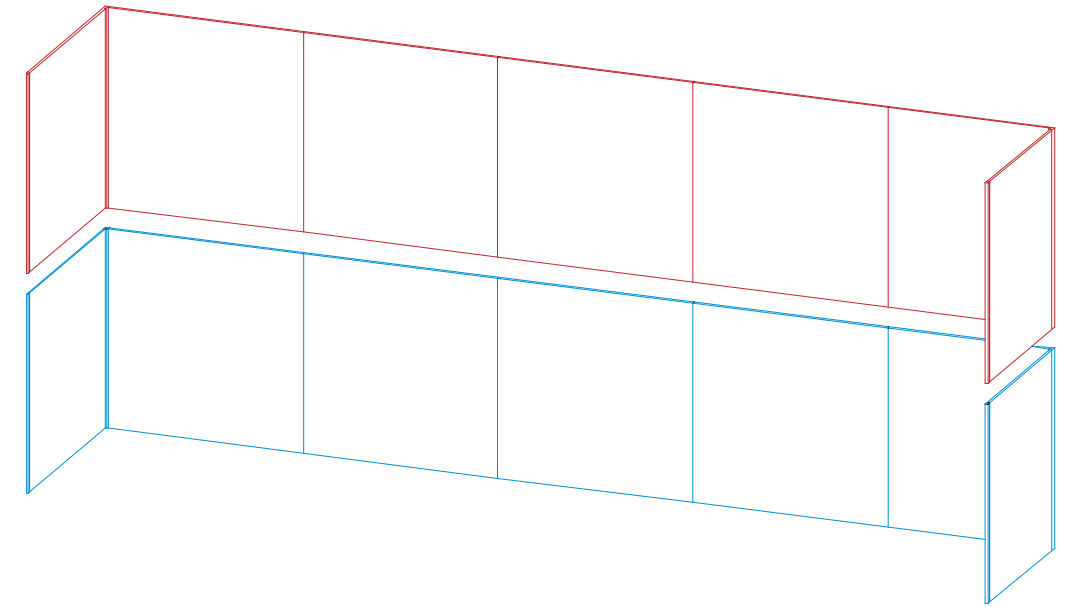
Steps:
 1) Assemble by starting at panel #1 and continue in numerical order.



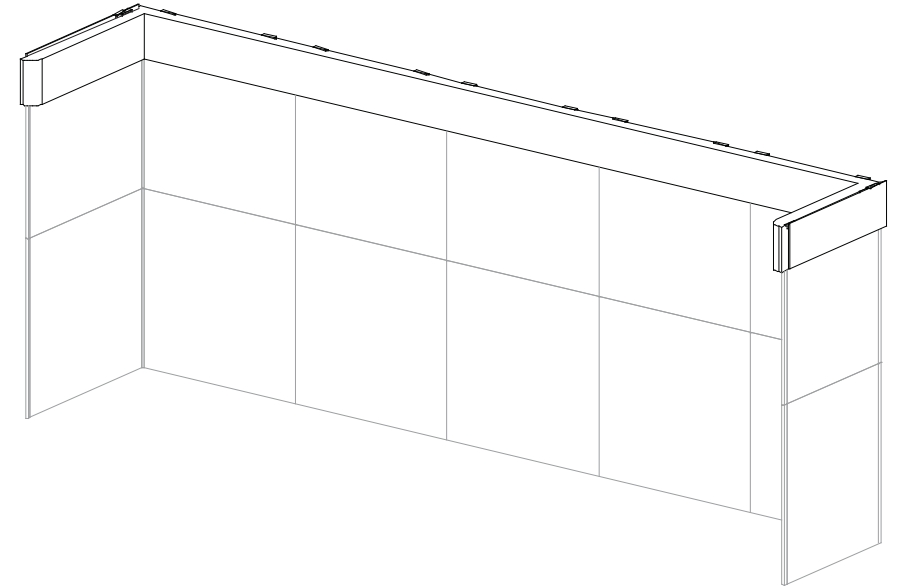
866.652.2100

Item Number	Description
1	47.5" h End Cap
2	46" w x 47.5" h Flat Panel
3	47.5" h 90° Connector
4	46" w x 47.5" h Flat Panel
5	46" w x 47.5" h Flat Panel
6	46" w x 47.5" h Flat Panel
7	46" w x 47.5" h Flat Panel w/ Wood Core
8	38" w x 47.5" h Flat Panel w/ Wood Core
9	47.5" h 90° Connector
10	38" w x 47.5" h Flat Panel
11	47.5" h End Cap

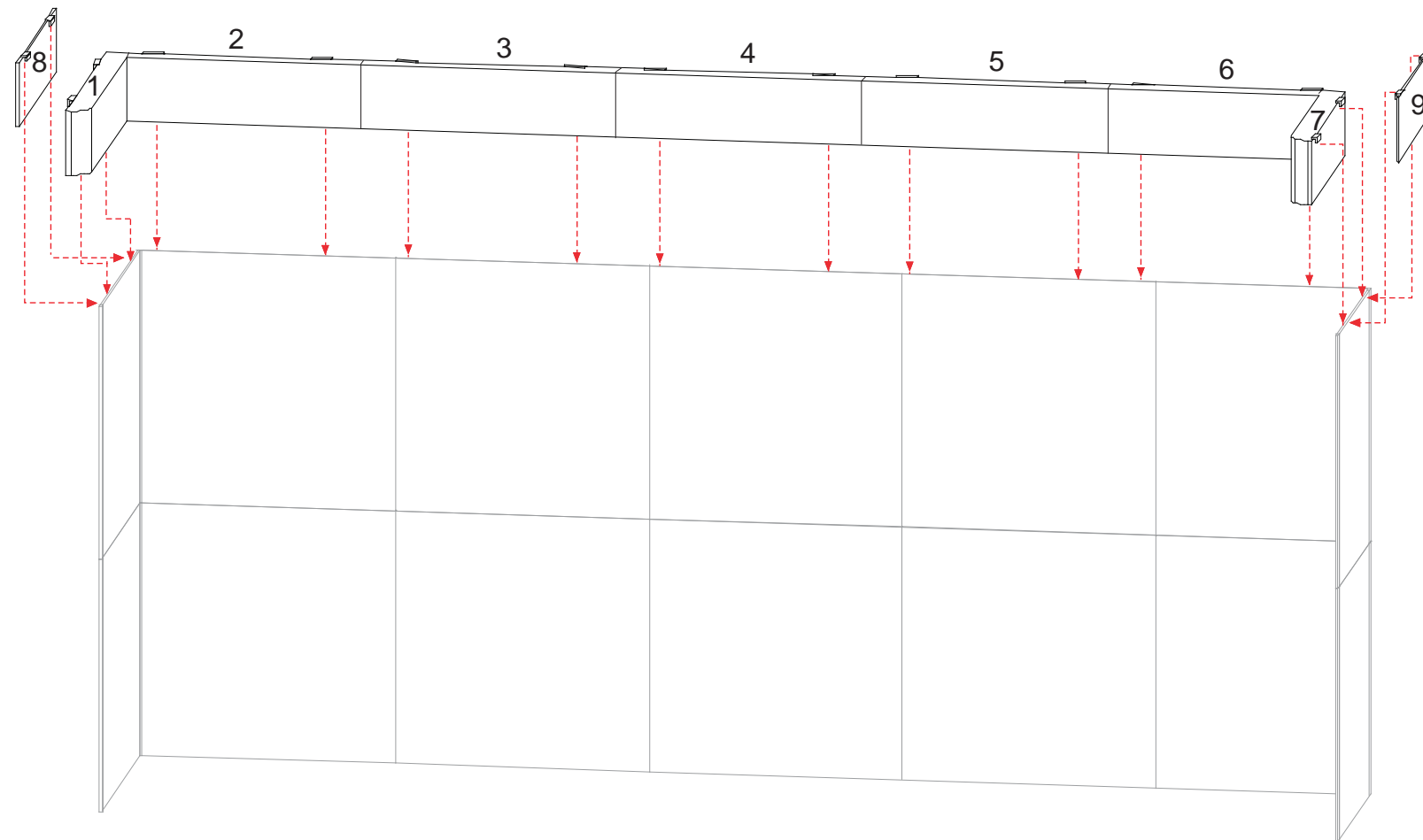
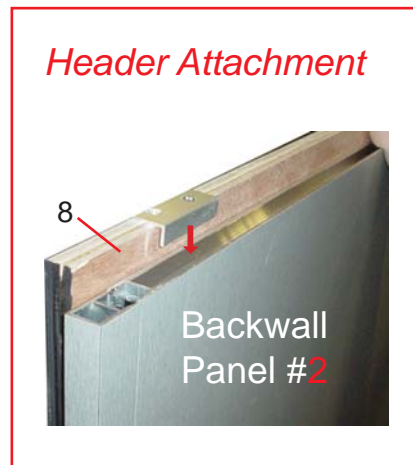
Steps:
 1) Assemble by starting at panel #1 and continue in numerical order.



866.652.2100



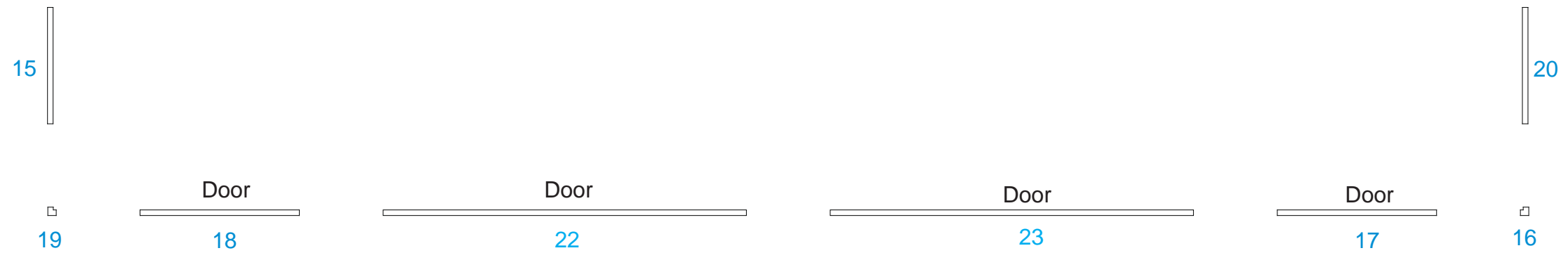
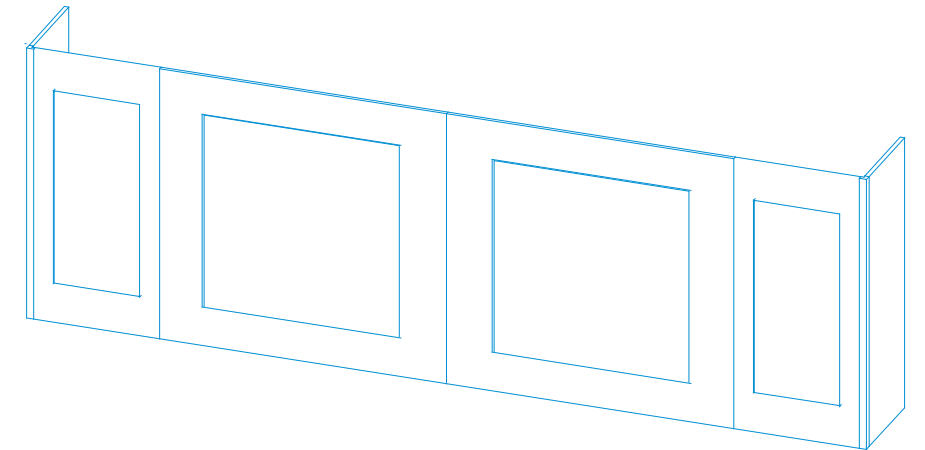
Hook header pieces to top of assembled backwall as shown.



866.652.2100

Item Number	Description
15	14.125"w x 42"h Flat Panel
19	42"h 90° Connector
18	19"w x 42"h Flat Panel w/ Door
22	43.319"w x 42"h Flat Panel w/ Door
23	43.319"w x 42"h Flat Panel w/ Door
17	19"w x 42"h Flat Panel w/ Door
16	42"h 90° Connector
20	14.125"w x 42"h Flat Panel

Steps:
Assemble pedestal by starting at panel #12



866.652.2100

Item Number	Description
24	22.637" w x 38.1875" h Flat Panel w/ Door
25	19" w x 38.1875" h Flat Panel w/ Door
26	38.1875" h 90° Connector
27	14.138" w x 38.1875" h Flat Panel
28	38.1875" h 90° Connector
29	19" w x 38.1875" h Flat Panel
30	22.637" w x 38.1875" h Flat Panel
31	38.1875" h 90° Connector
32	14.138" w x 38.1875" h Flat Panel
33	38.1875" h 90° Connector

Steps:
Assemble pedestal by starting at panel #24 and continue in numerical order.

