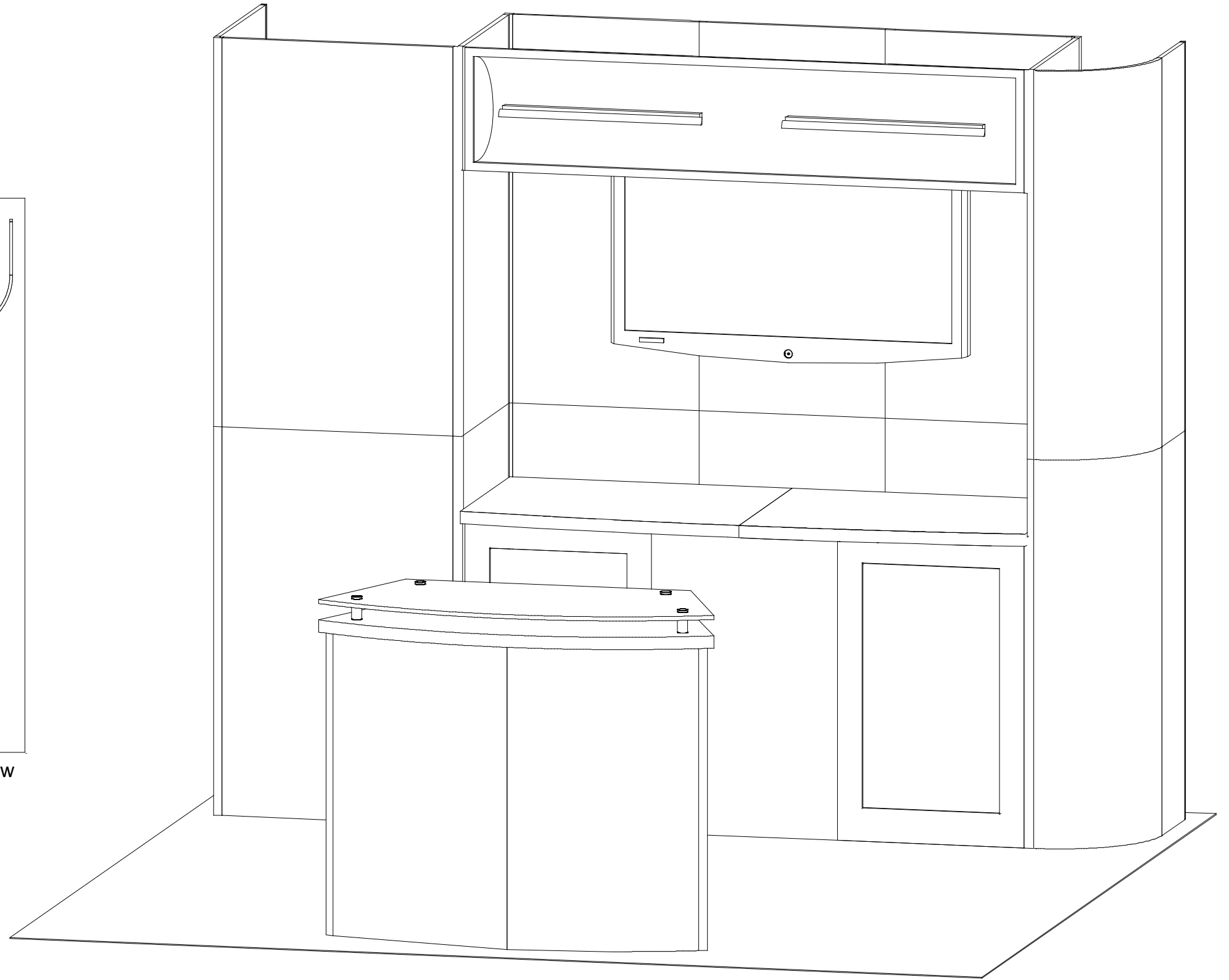
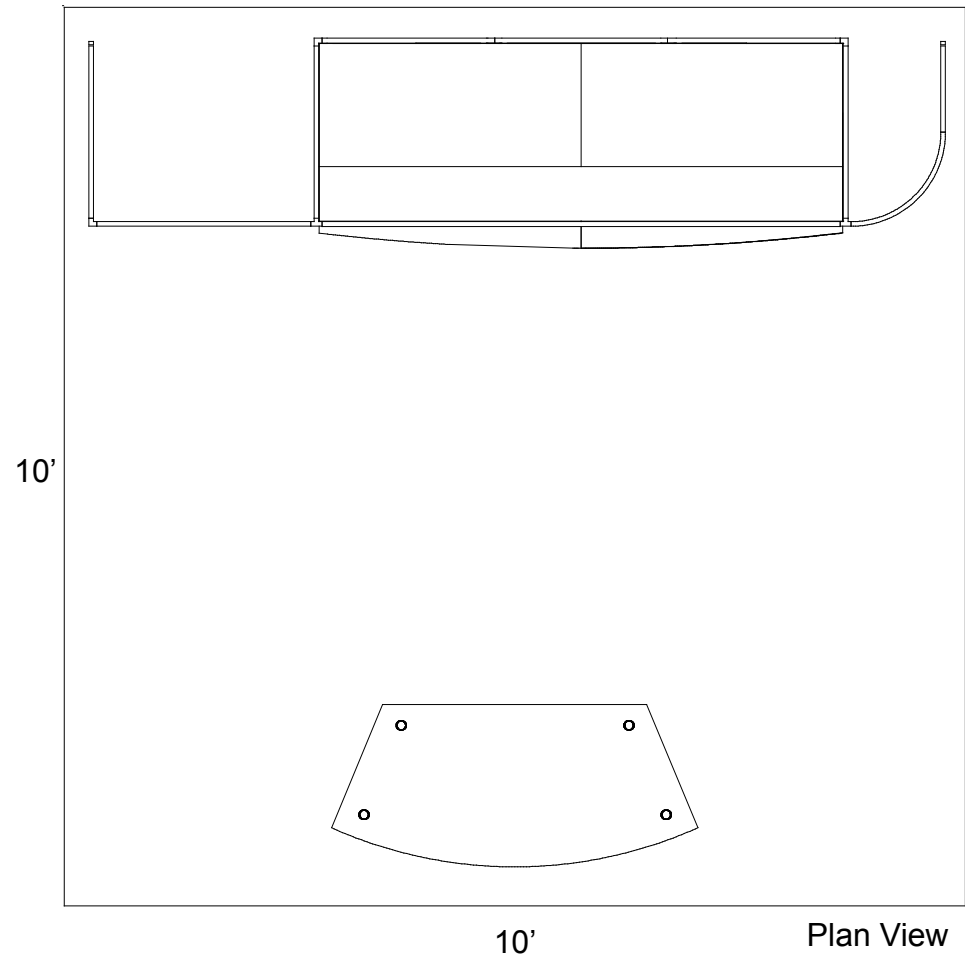


euro It | *HYBRIDS*



WHEN DISASSEMBLING ALUMINUM EXTRUSION, TIGHTEN ALL SETSCREWS AND LOCKS TO PREVENT LOSS DURING SHIPPING

euro lt | HYBRIDS

Using Your Setup Instructions

The Euro LT Hybrids Setup Instructions are created specifically for your configuration. They are laid out sequentially in levels, including exploded views, and a logical series of detailed steps to assemble the main structure and components. We encourage you to study the instructions **before** attempting to assemble your exhibit.

Each page reminds you to tighten the setscrews after disassembling your exhibit to prevent loss of the locks and setscrews (see below in RED). This is VERY IMPORTANT.

Cleaning and Packing Your Display

- 1) Use care when cleaning aluminum extrusion or acrylic inserts. Use only non-abrasive cleaners.
- 2) When cleaning laminate inserts, countertops, or panels use mild cleansers and a soft material such as cotton.
- 3) Keep all display components away from extreme heat and long exposure to sunlight to avoid warping and fading.
- 4) Retain all packing material. It will make re-packing much easier and will reduce the likelihood of shipping damage.

General Setup Instructions for Extrusion System



The Tool

Most exhibits can be assembled with the supplied Hex Key Tool. Occasionally, a flat head screwdriver may be required.

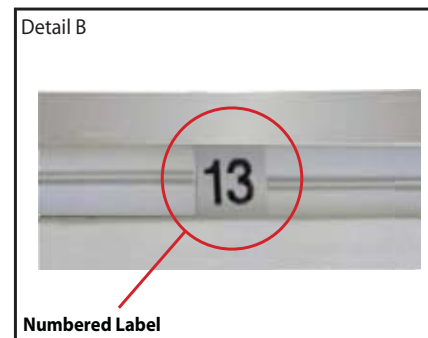


Typical Connection

Most horizontal extrusion connections have a patented expandable lock. This lock inserts into the groove of an opposing extrusion. Tightening the lock with the Hex Key Tool expands the lock and creates a strong positive connection.

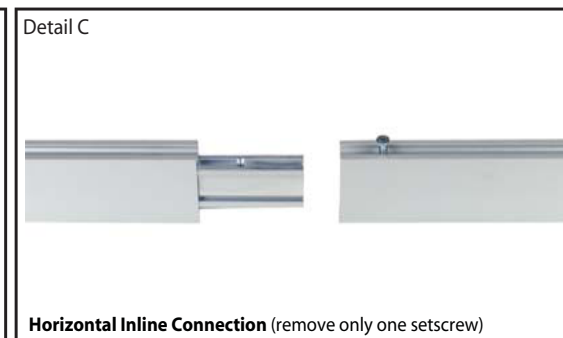


Typical Connection (cont'd)



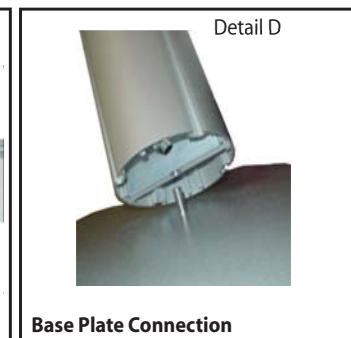
Numbered Label

Each extrusion contains a numbered label which corresponds with setup instructions. The label is located within a groove of the extrusion (when possible). With extrusion components the labels contain Black numbers unless otherwise specified.



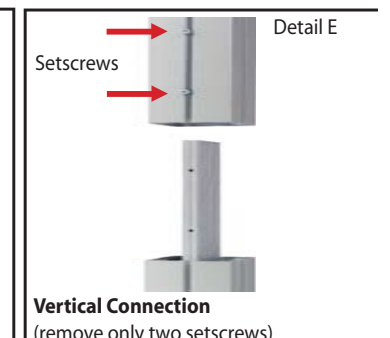
Horizontal Inline Connection (remove only one setscrew)

Remove only (1) setscrew when disassembling. Replace setscrew in extrusion after assembling it. Before packing, replace setscrew in extrusion to avoid losing it.



Base Plate Connection

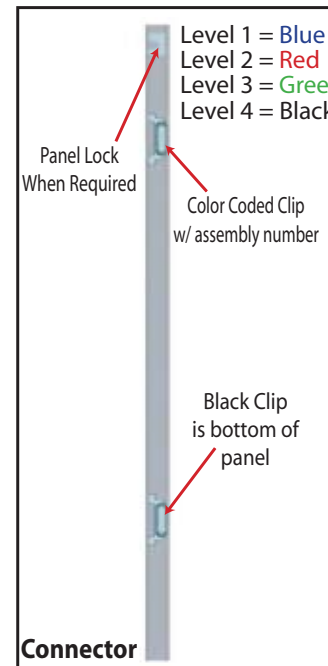
Attach base plate to round or square vertical extrusion using the bolt provided. Be careful not to strip the threads.



Vertical Connection (remove only two setscrews)

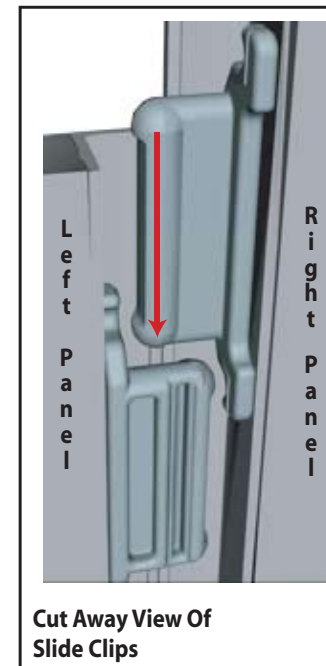
When vertical extrusions are packed in portable cases rather than crates or tubs, they must be broken down into smaller section which then require assembly.

Remove only (2) setscrews when disassembling. Replace setscrews in extrusion after assembling it. Before packing, replace setscrews in extrusion to avoid losing them.



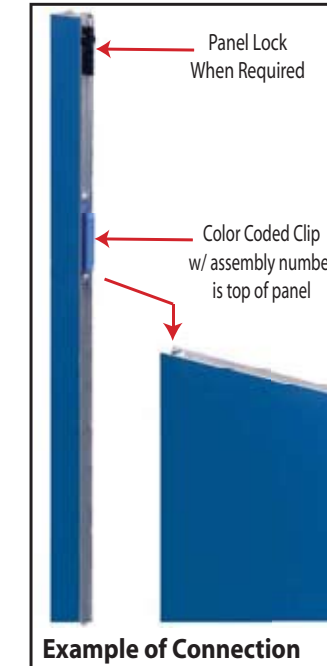
Connector

Each component has 2 clips, the lower clip is ALWAYS black. The top clip is color coded to distinguish which level. The color coded clip also contains the numbered label.



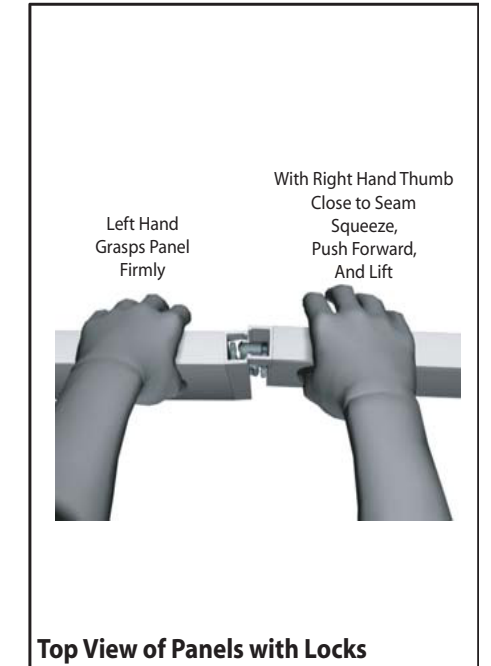
Cut Away View Of Slide Clips

Components connect together by aligning them and sliding downward connecting clips together.



Example of Connection

Configurations are assembled from left to right, usually starting with #1 and following the numbered sequence.



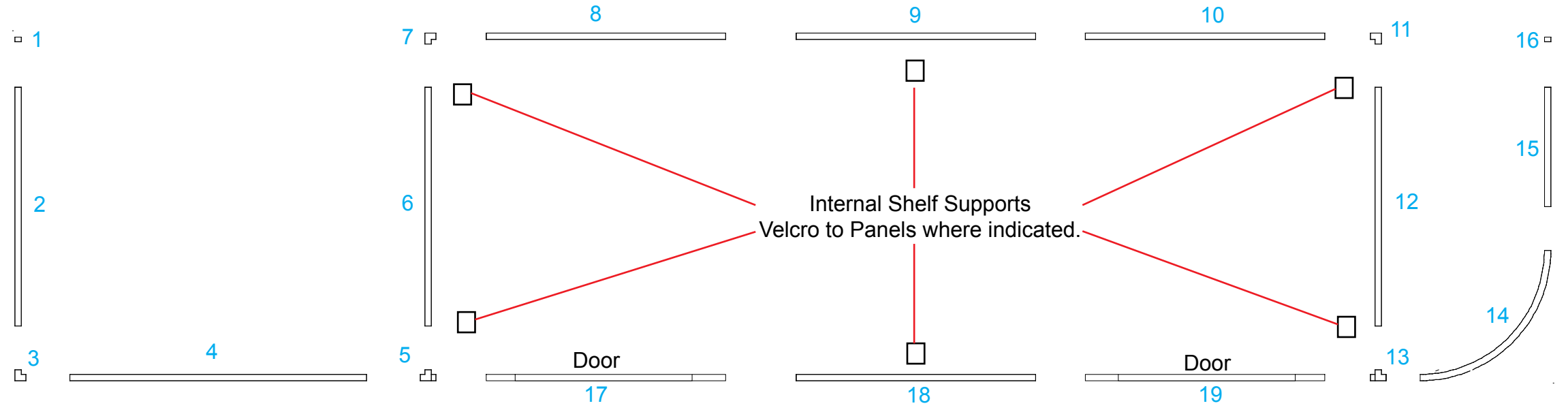
Top View of Panels with Locks

The first level of components contain panel locks that are located at the top of the panel for extra stability and seamless connection. When disassembling panels twist top connection slightly and lift right panel upward.

WHEN DISASSEMBLING ALUMINUM EXTRUSION, TIGHTEN ALL SETSCREWS AND LOCKS TO PREVENT LOSS DURING SHIPPING

866.652.2100

Item Number	Description
1	47.5”h End Cap
2	23”w x 47.5”h Flat Panel
3	47.5”h 90° Connector
4	28.5”w x 47.5”h Flat Panel
5	47.5”h Milled off T-Connector
6	23”w x 47.5”h Flat Panel
7	47.5”h 90° Connector
8	23”w x 47.5”h Flat Panel
9	23”w x 47.5”h Flat Panel
10	23”w x 47.5”h Flat Panel
11	47.5”h 90° Connector
12	23”w x 47.5”h Flat Panel
13	47.5”h Milled off T-Connector
14	11.5”r x 47.5” Quarter Curve Panel
15	11.5”w x 47.5”h Flat Panel
16	47.5”h End Cap
17	23”w x 38”h Flat Panel w/Door
18	23”w x 38”h Flat Panel
19	23”w x 38”h Flat Panel w/Door

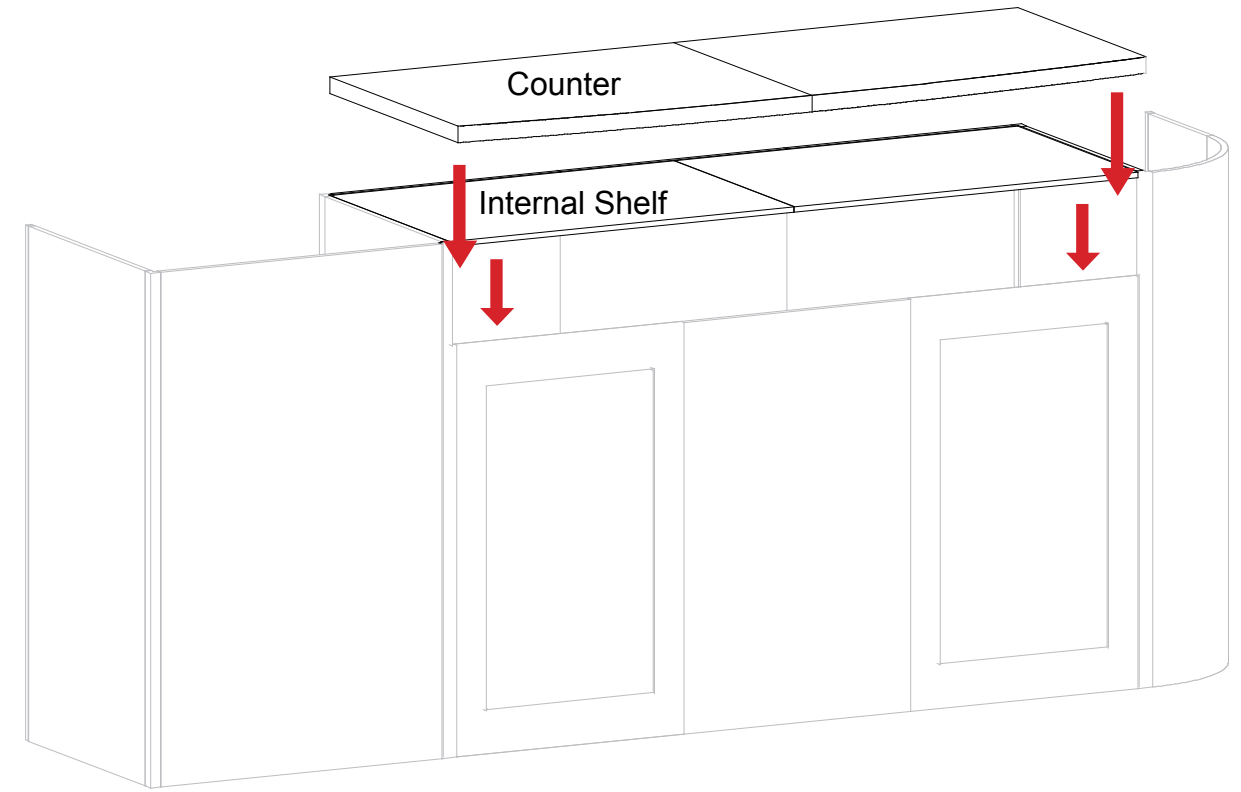


Steps:

Connect panels together in numerical order as shown in illustrations.

Attach Shelf supports to Velcro located on the internal panels. Place shelf atop supports.

Set counter atop assembled lower section.



WHEN DISASSEMBLING ALUMINUM EXTRUSION, TIGHTEN ALL SETSCREWS AND LOCKS TO PREVENT LOSS DURING SHIPPING

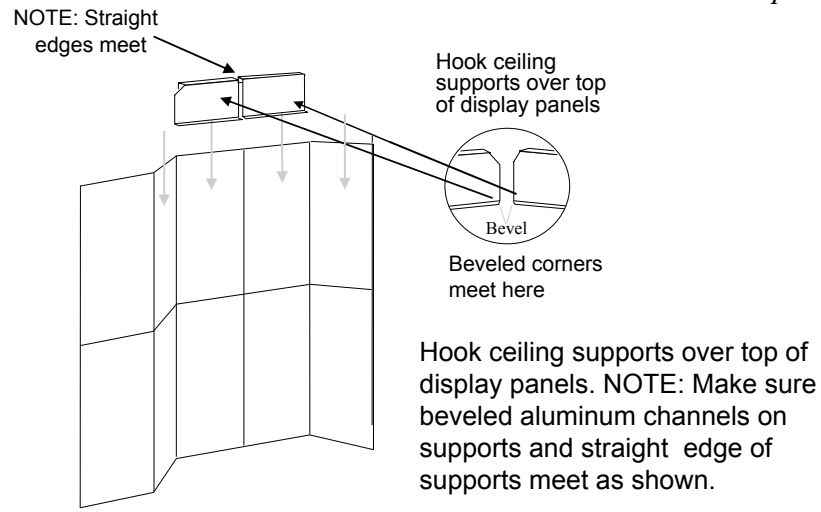
866.652.2100

Item Number	Description
1	47.5" h End Cap
2	23" w x 47.5" h Flat Panel
3	47.5" h 90° Connector
4	28.5" w x 47.5" h Flat Panel
5	47.5" h Milled off T-Connector
6	23" w x 47.5" h Flat Panel
7	47.5" h 90° Connector
8	23" w x 47.5" h Flat Panel
9	23" w x 47.5" h Flat Panel w/ wood core
10	23" w x 47.5" h Flat Panel
11	47.5" h 90° Connector
12	23" w x 47.5" h Flat Panel
13	47.5" h Milled off T-Connector
14	11.5" r x 47.5" Quarter Curve Panel
15	11.5" w x 47.5" h Flat Panel
16	47.5" h End Cap
20	Backlit Header

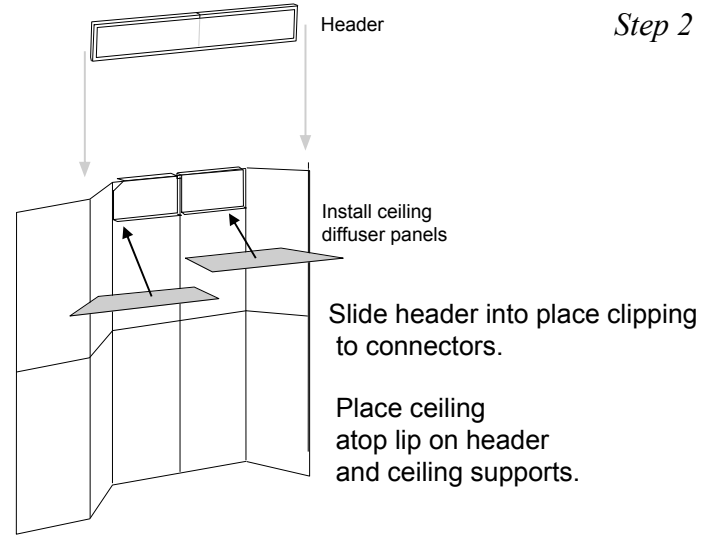


Steps:
Connect panels together in numerical order as shown in illustrations.

Example of Header Kit Assembly

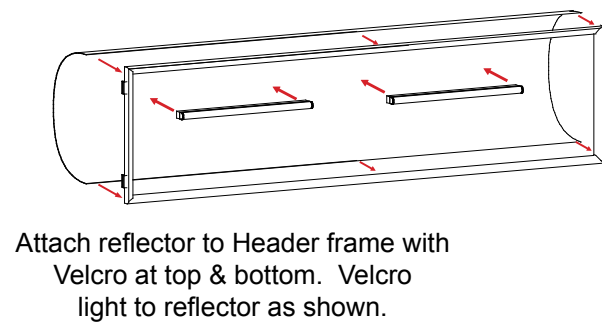


Step 1

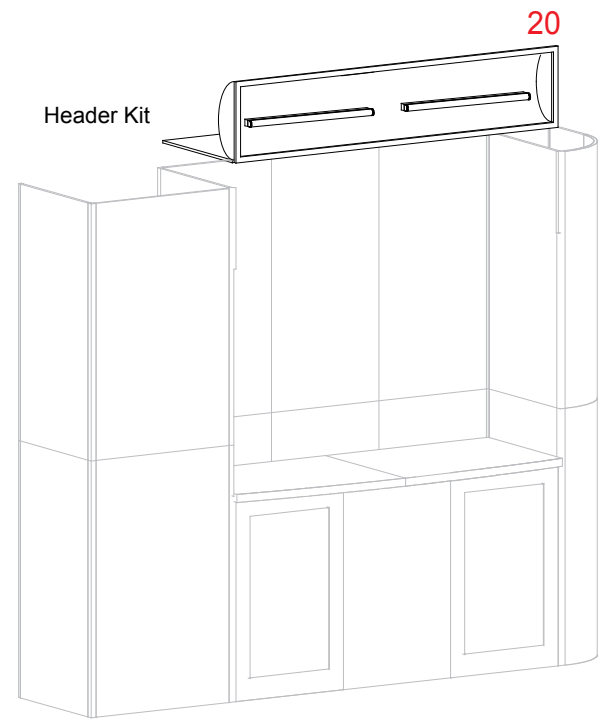


Step 2

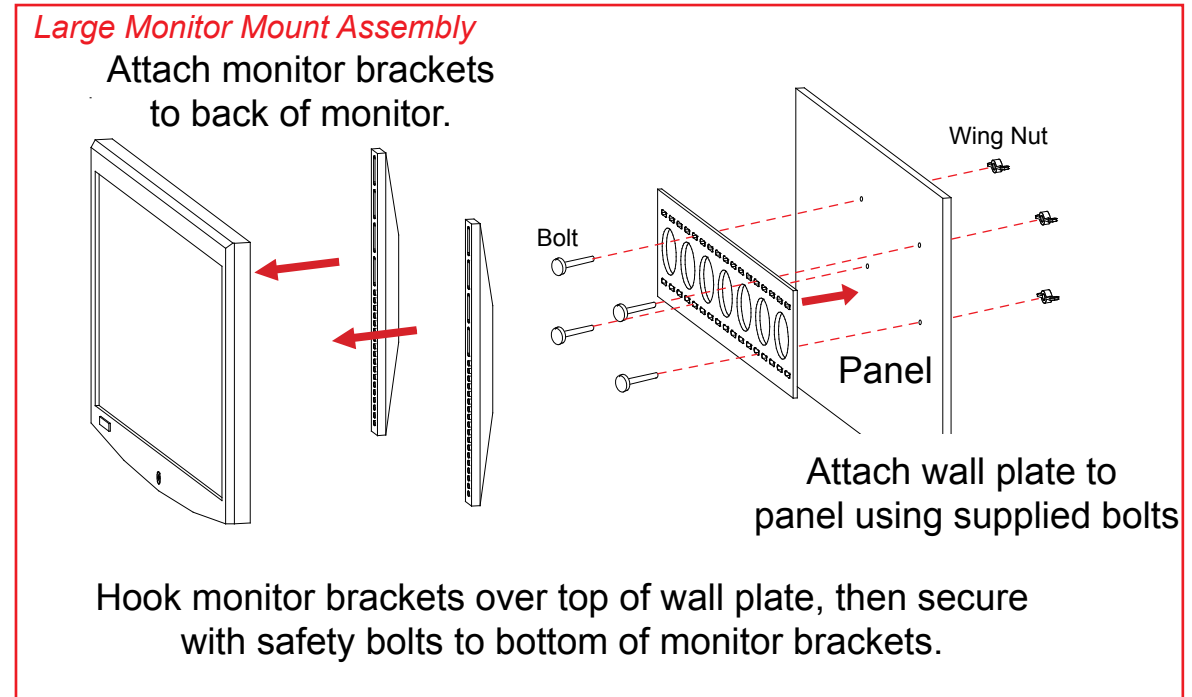
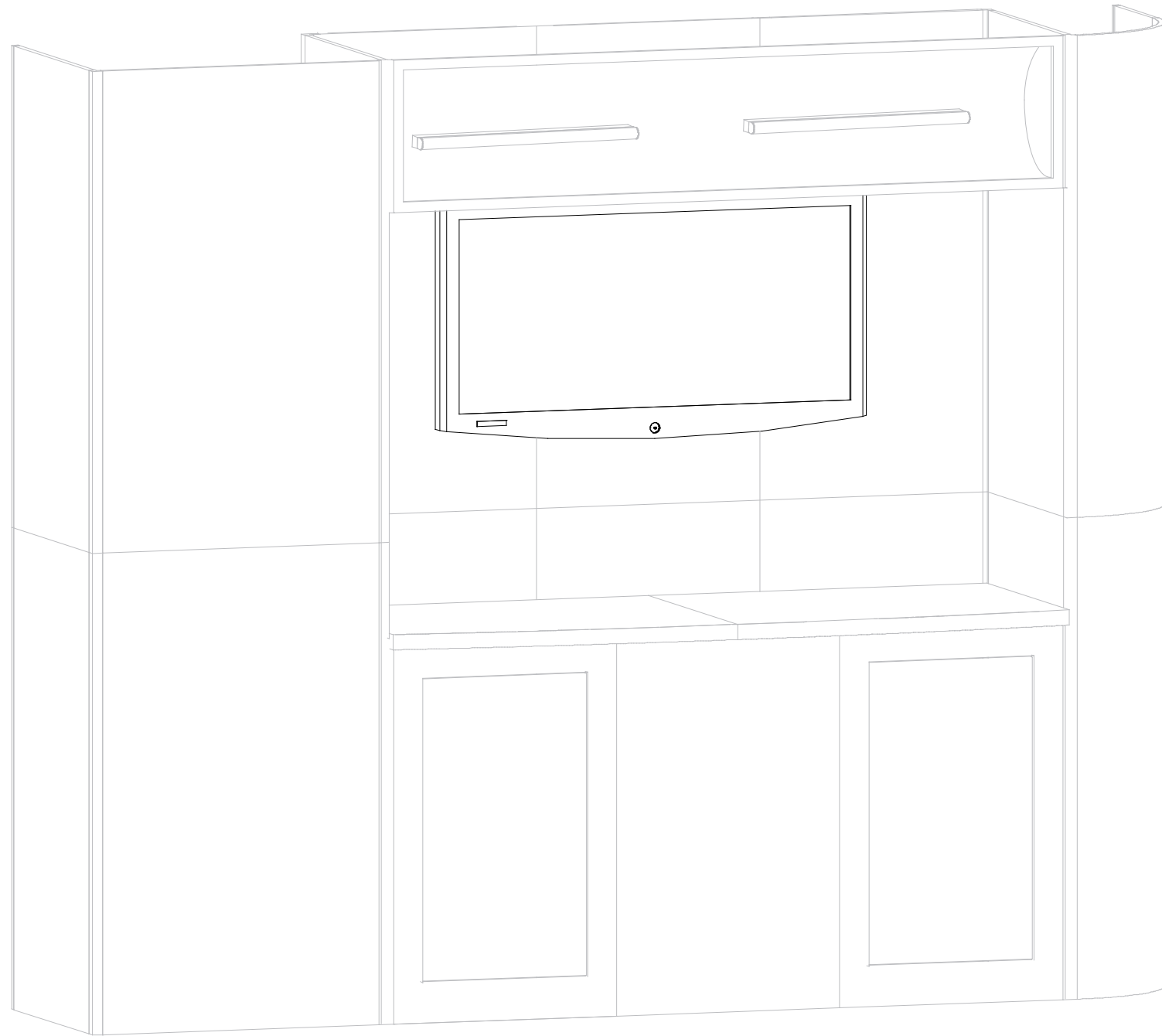
Header Kit Assembly



Step 3



WHEN DISASSEMBLING ALUMINUM EXTRUSION, TIGHTEN ALL SETSCREWS AND LOCKS TO PREVENT LOSS DURING SHIPPING



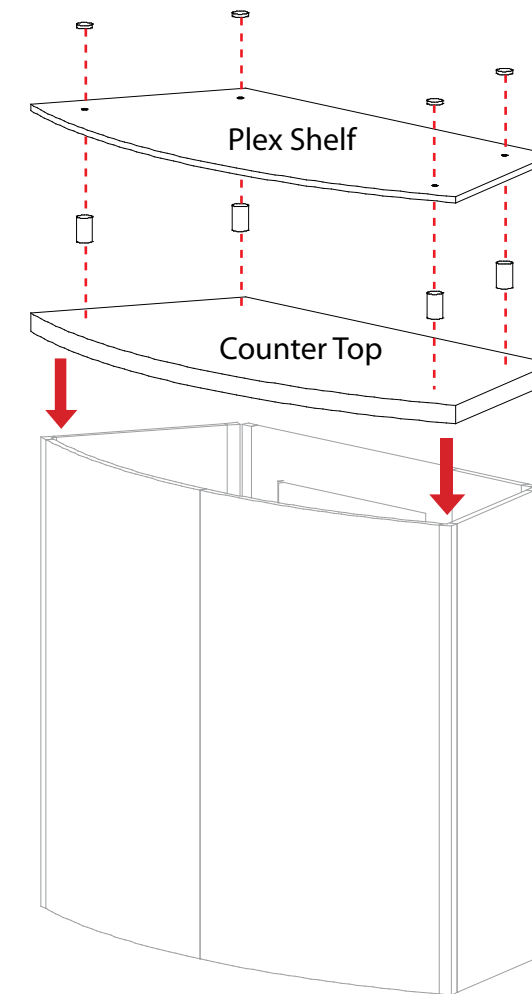
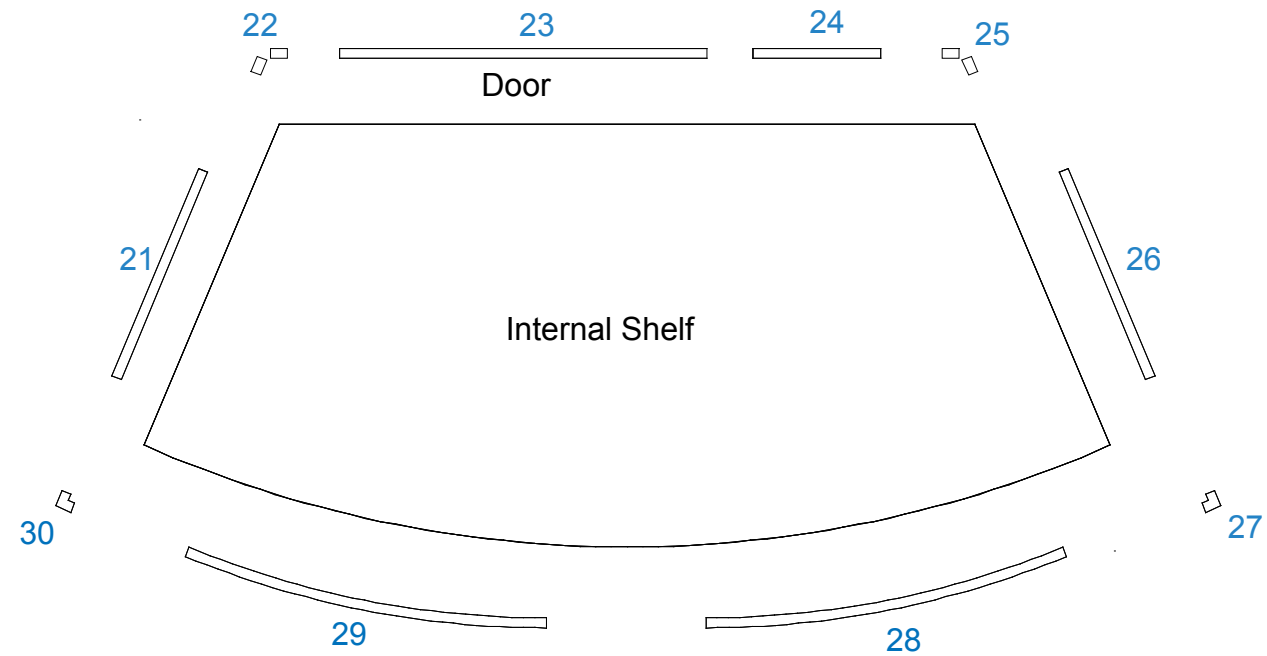
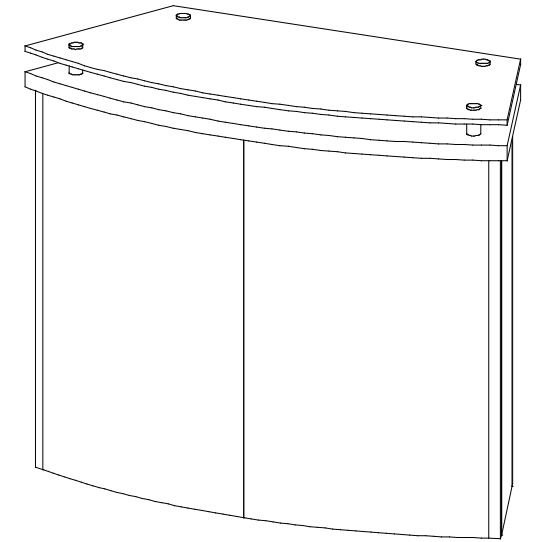
WHEN DISASSEMBLING ALUMINUM EXTRUSION, TIGHTEN ALL SETSCREWS AND LOCKS TO PREVENT LOSS DURING SHIPPING

866.652.2100

Item Number	Description
21	14.125"w x 38"h Panel
22	38"h Flexible Connector
23	23"w x 38"h Panel w/ Door
24	8.003"w x 38"h Panel
25	38"h Flexible Connector
26	14.125"w x 38"h Panel
27	38"h 90° Connector
28	57.5°r Curved Panel
29	57.5°r Curved Panel
30	38"h 90° Connector

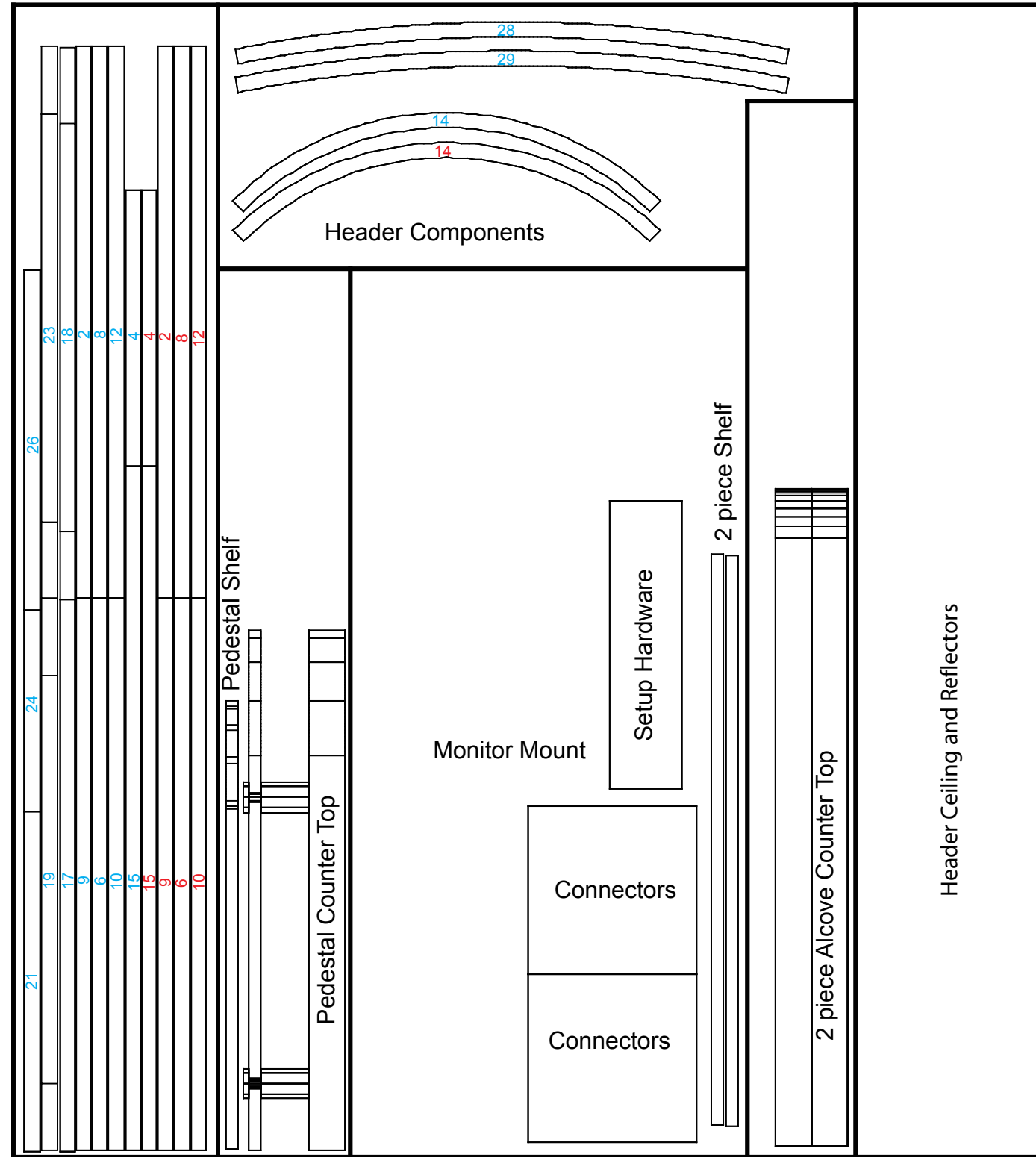
Steps:

- 1) Assemble by starting at panel #21 and continue in numerical order.
- 2) Velcro internal shelf supports to inside of assembled base.
- 3) Set internal shelf atop shelf supports.
- 4) Place counter atop assembled pedestal base.
- 5) Attach top shelf to counter using stand-offs.



Place counter atop assembled pedestal base. Attach top shelf to counter using stand-offs.

WHEN DISASSEMBLING ALUMINUM EXTRUSION, TIGHTEN ALL SETSCREWS AND LOCKS TO PREVENT LOSS DURING SHIPPING



Front View of Tub

WHEN DISASSEMBLING ALUMINUM EXTRUSION, TIGHTEN ALL SETSCREWS AND LOCKS TO PREVENT LOSS DURING SHIPPING