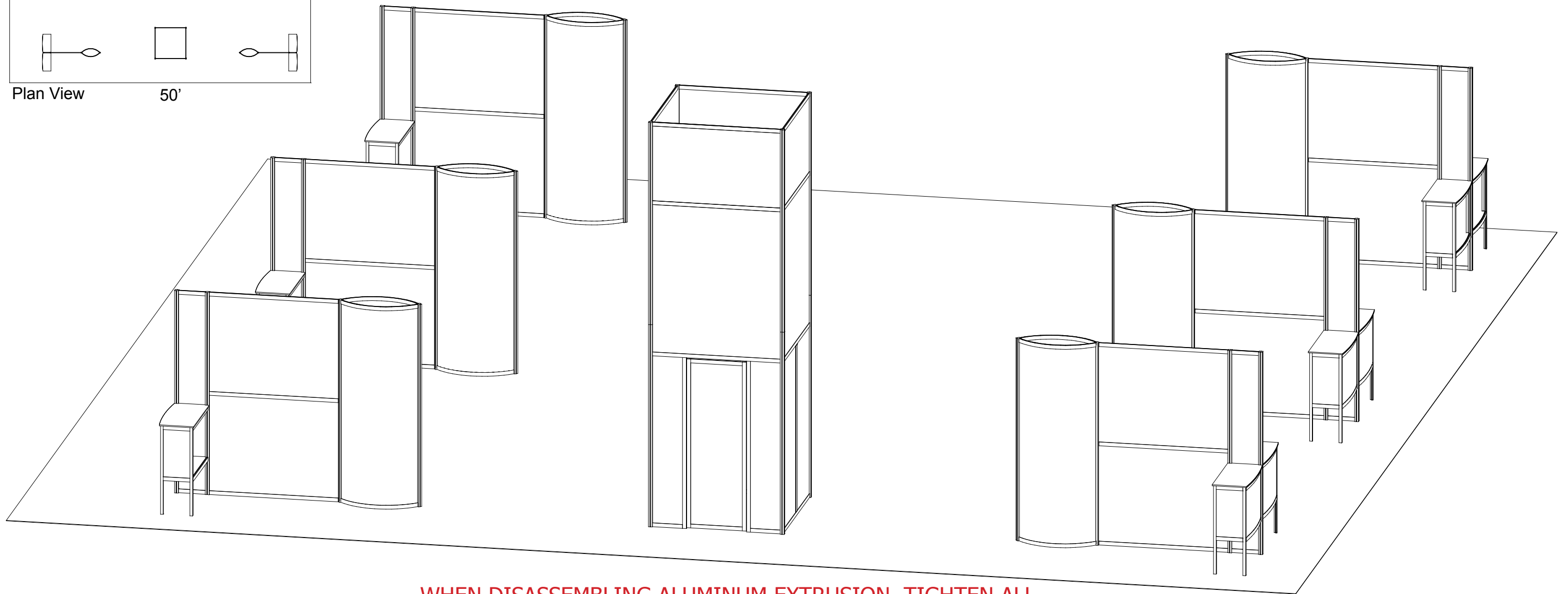


Plan View 50'



WHEN DISASSEMBLING ALUMINUM EXTRUSION, TIGHTEN ALL SETSCREWS AND LOCKS TO PREVENT LOSS DURING SHIPPING

# visionary™ IDESIGNS

## Using Your Setup Instructions

The Visionary Designs Setup Instructions are created specifically for your configuration. They are laid out sequentially, including an exploded view of the entire display, and then a logical series of detailed steps to assemble the main structure and components. We encourage you to study the instructions **before** attempting to assemble your exhibit.

Each page reminds you to tighten the setscrews after disassembling your exhibit to prevent loss of the locks and setscrews (see below in RED). This is **VERY IMPORTANT**.

## Cleaning and Packing Your Display

- 1) Use care when cleaning aluminum extrusion or acrylic inserts. Use only non-abrasive cleaners.
- 2) When cleaning laminate inserts or countertops, use mild cleansers and a soft material such as cotton.
- 3) Keep all display components away from extreme heat and long exposure to sunlight to avoid warping and fading.
- 4) Retain all packing material. It will make re-packing much easier and will reduce the likelihood of shipping damage.



**The Tool**

Most Visionary Designs exhibits can be assembled with the supplied Hex Key Tool. Occasionally, a flat head screwdriver may be required.



Detail A

**Typical Connection**



**Typical Connection (cont'd)**

Most horizontal extrusion connections have a patented expandable lock. This lock inserts into the groove of an opposing extrusion. Tightening the lock with the Hex Key Tool expands the lock and creates a strong positive connection.



Detail B

**Numbered Label**

Each extrusion contains a numbered label which corresponds with setup instructions. The label is located within a groove of the extrusion (when possible). With Visionary Designs the labels contain Black numbers unless otherwise specified.



Detail C

**Horizontal Inline Connection** (remove only one setscrew)

Remove only (1) setscrew when disassembling. Replace setscrew in extrusion after assembling it. Before packing, replace setscrew in extrusion to avoid losing it.



Detail D

**Base Plate Connection**

Attach base plate to round or square vertical extrusion using the bolt provided. Be careful not to strip the threads.



Detail E

**Vertical Connection**  
(remove only two setscrews)

When vertical extrusions are packed in portable cases rather than crates or tubs, they must be broken down into smaller sections which then require assembly.

Remove only (2) setscrews when disassembling. Replace setscrews in extrusion after assembling it. Before packing, replace setscrews in extrusion to avoid losing them.

**WHEN DISASSEMBLING ALUMINUM EXTRUSION, TIGHTEN ALL SETSCREWS AND LOCKS TO PREVENT LOSS DURING SHIPPING**

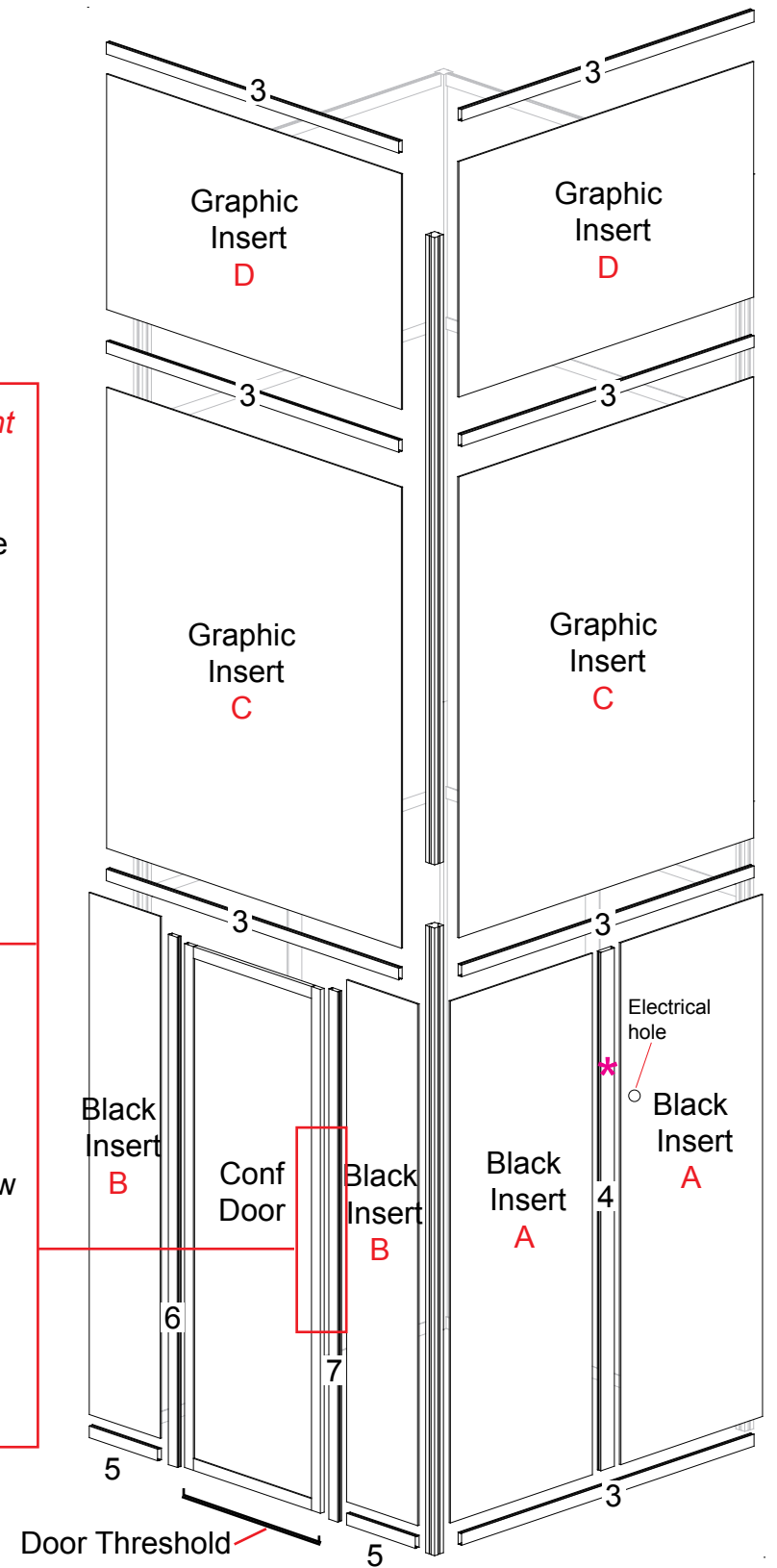
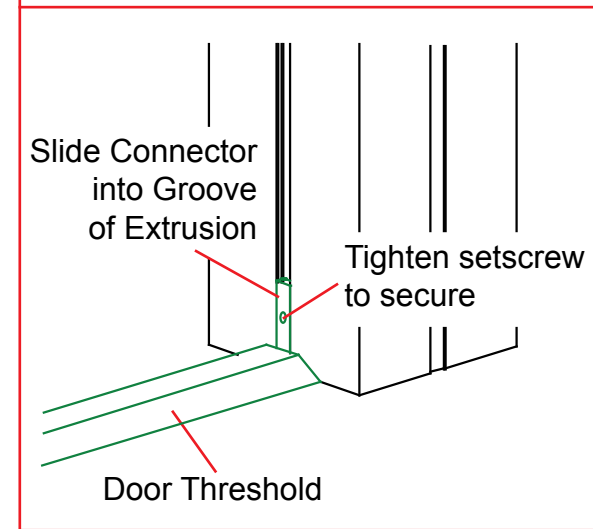
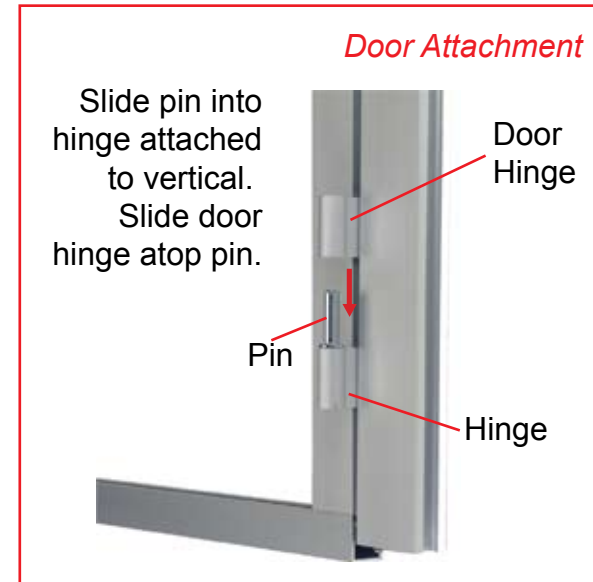
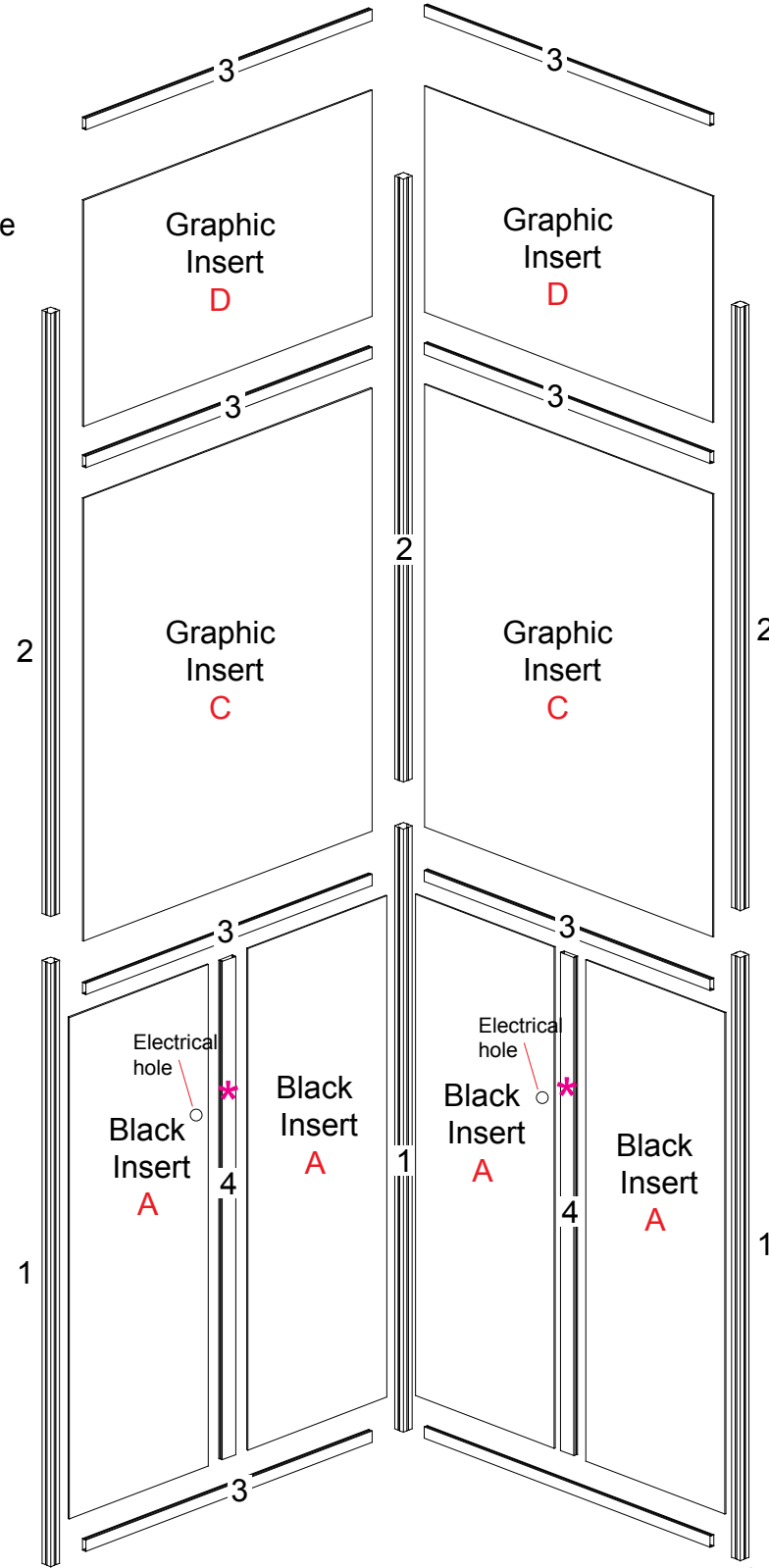
Part Number	Qty	Description
1	4	96" h Vertical Extrusion
2	4	96" h Vertical Extrusion
3	15	59.5" w Horizontal Extrusion
4	2	79.331" h Vertical Extrusion
5	2	13.959" w Horizontal Extrusion
6	1	81.123" h Vertical Extrusion w/ Door stop
7	1	81.123" h Vertical Extrusion w/ Door Hinge

**Steps**

- 1) Connect vertical extrusions [1 to 2].
- 2) Loosely connect vertical extrusions [4] to center of horizontal extrusions [3] then place inserts. Tighten vertical extrusions [4].
- 3) Connect remaining horizontal extrusions [3] between vertical assemblies [1/2] placing door threshold and inserts as shown.
- 4) Connect horizontal extrusions [5] between vertical extrusions [1, 6 and 7] placing inserts, continue on with horizontal extrusions [3] placing remaining inserts.
- 5) Attach door, refer to door detail.

Insert	Size
A	28.872" w x 79.831" h
B	14.459" w x 79.831" h
C	60" w x 70.5" h
D	60" w x 36" h

\* Monitor Mount Locations



**WHEN DISASSEMBLING ALUMINUM EXTRUSION, TIGHTEN ALL SETSCREWS AND LOCKS TO PREVENT LOSS DURING SHIPPING**

866.652.2100

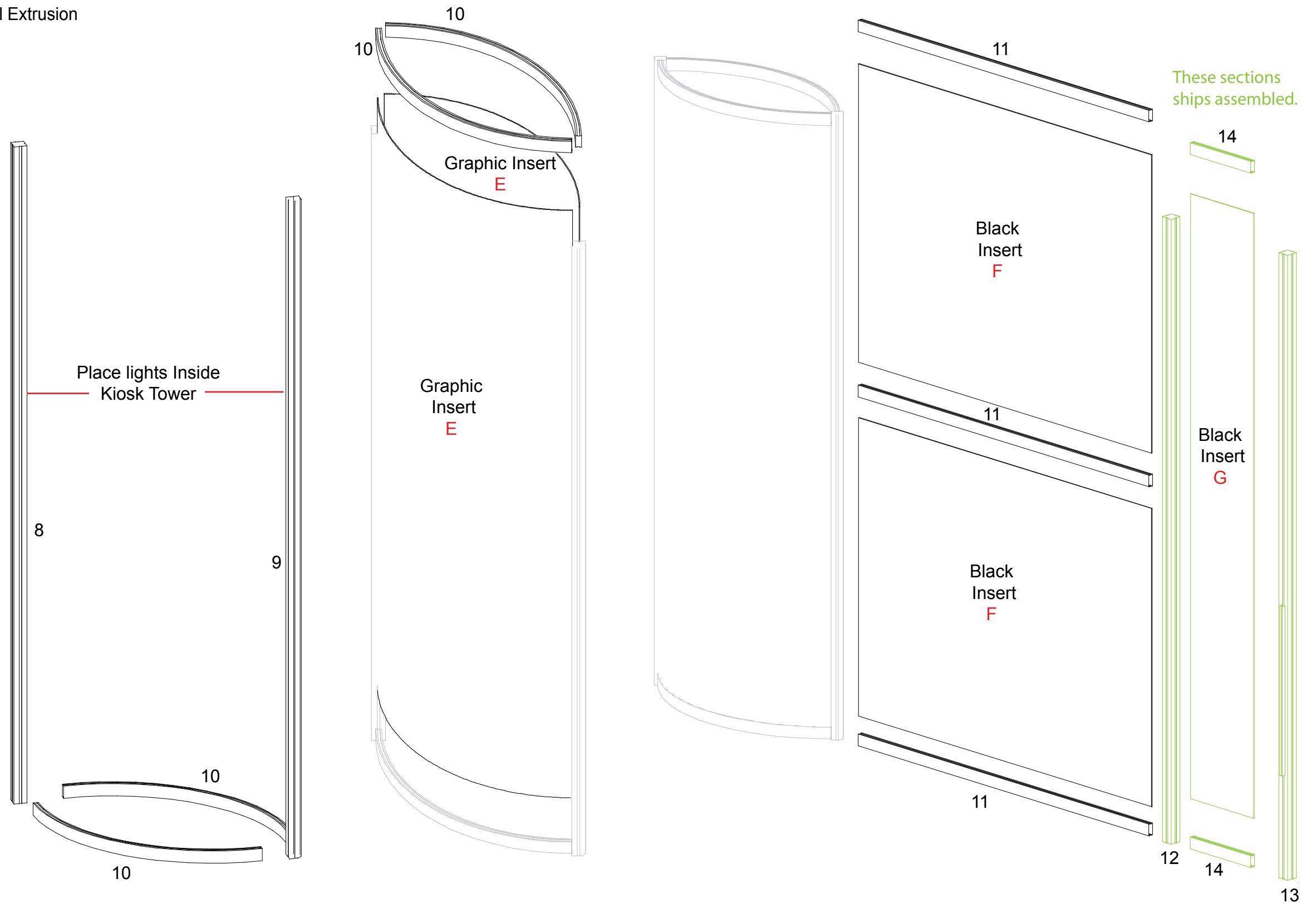
Part Number	Qty	Description
8	1	96"h Vertical Extrusion
9	1	96"h Vertical Extrusion
10	4	39.7359"w Curved Horizontal Extrusion
11	3	60"h Horizontal Extrusion
12	1	96"h Vertical Extrusion
13	1	96"h Vertical Extrusion
14	2	12.5"h Horizontal Extrusion

Steps

- 1) Connect horizontal curves [10] between vertical extrusions [8 and 9].
- 2) Place lights as shown.
- 3) Place graphic insert as shown.
- 4) Connect horizontal curves [10] between vertical extrusions [8 and 9] and atop insert.
- 5) Connect horizontal extrusions [11] between vertical extrusions [9 and 12] placing inserts as shown.
- 6) Connect horizontal extrusions [14] between vertical extrusions [12 and 13] placing insert as shown.

REPEAT STEPS FOR ALL 6 KIOSKS

Insert	Size
E	35.75"w x 92.9"h
F	60.5"w x 45.813"h
G	60.5"w x 45.813"h



WHEN DISASSEMBLING ALUMINUM EXTRUSION, TIGHTEN ALL SETSCREWS AND LOCKS TO PREVENT LOSS DURING SHIPPING

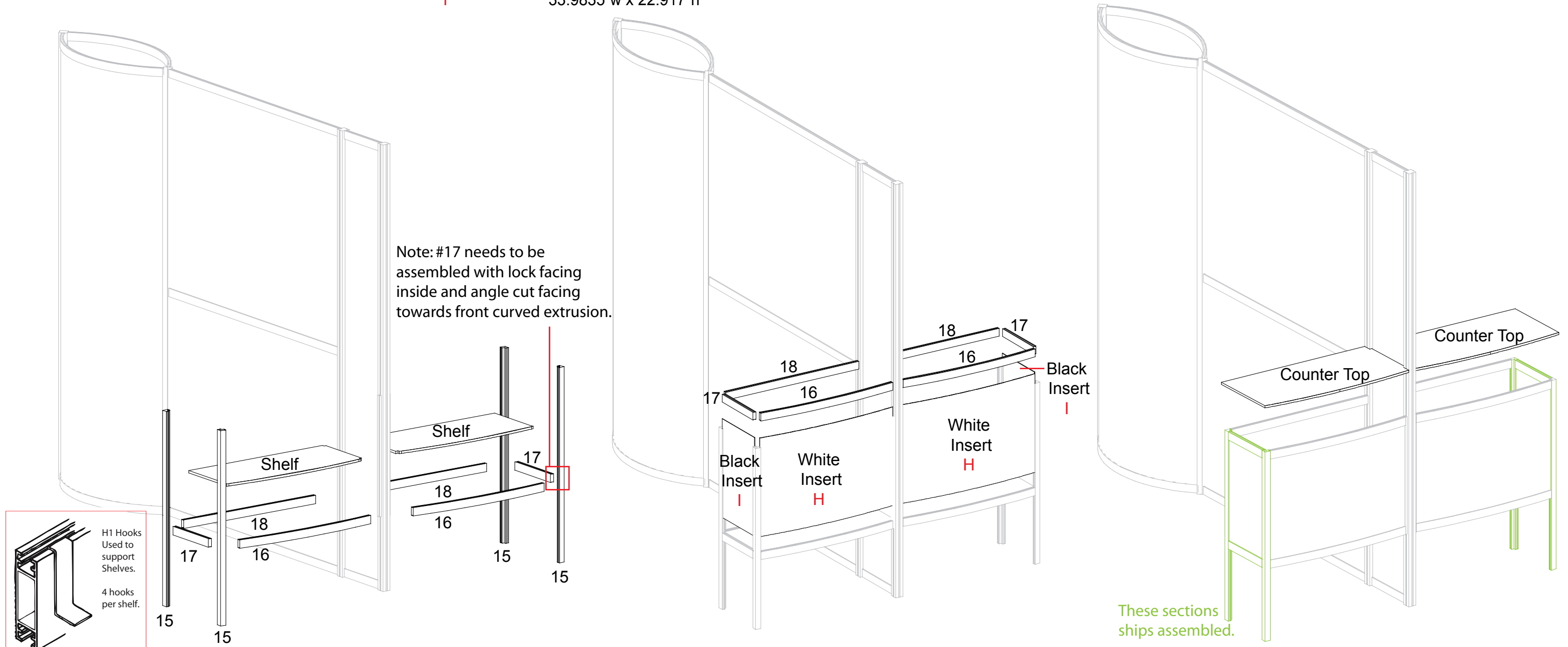
866.652.2100

Part Number	Qty	Description
15	4	42" h 90° Vertical Extrusion
16	4	33.825" w Curved Horizontal Extrusion
17	4	12.5" h Horizontal Extrusion
18	4	34" h Horizontal Extrusion

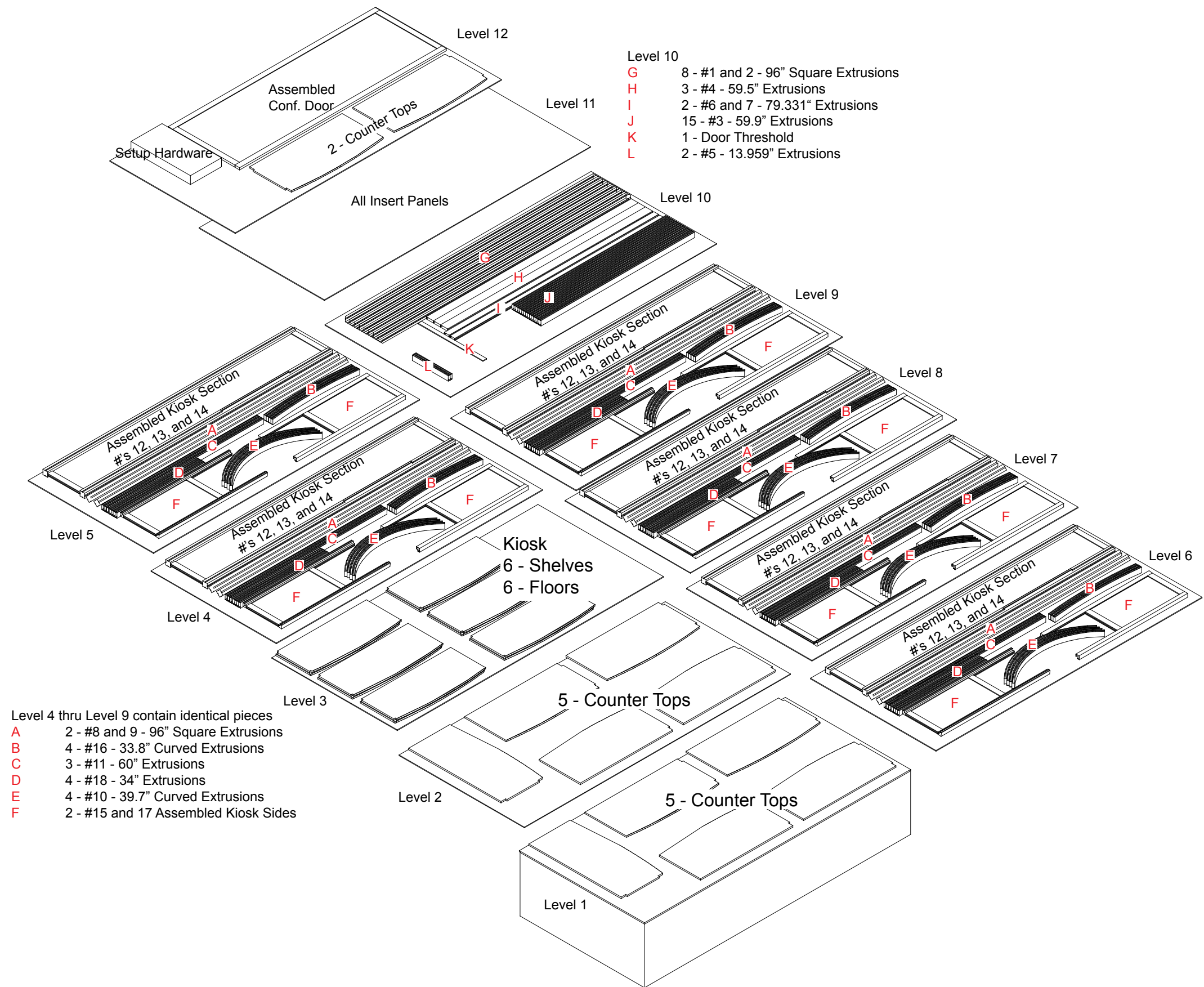
- Steps**
- 1) Connect horizontal extrusions and curves [16, 17 and 18] between vertical extrusions [12, 13, and 15].
  - 2) Place H1 hooks into grooves of extrusions then place shelves atop H1 hooks.
  - 3) Place inserts as shown.
  - 4) Connect horizontal extrusions and curves [16, 17 and 18] between vertical extrusions [12, 13, and 15] and atop inserts.
  - 5) Place Counters atop assembled pedestals.

**REPEAT STEPS FOR ALL 6 KIOSKS**

Insert	Size
H	12.9" w x 22.917" h
I	33.9835" w x 22.917" h



**WHEN DISASSEMBLING ALUMINUM EXTRUSION, TIGHTEN ALL SETSCREWS AND LOCKS TO PREVENT LOSS DURING SHIPPING**



WHEN DISASSEMBLING ALUMINUM EXTRUSION, TIGHTEN ALL SETSCREWS AND LOCKS TO PREVENT LOSS DURING SHIPPING



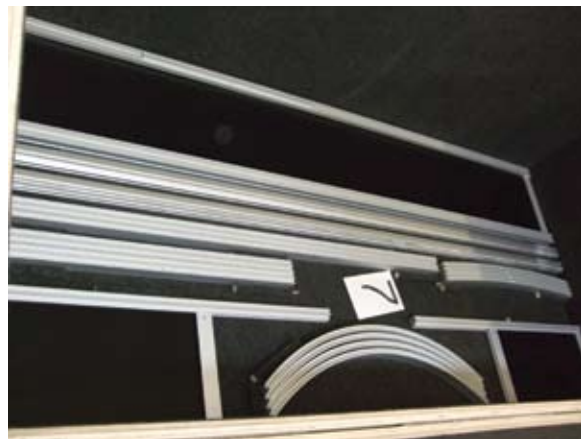
Level 11



Level 12



Level 6



Level 7



Level 8



Level 9



Level 10



Level 1



Level 2



Level 3



Level 4



Level 5

WHEN DISASSEMBLING ALUMINUM EXTRUSION, TIGHTEN ALL SETSCREWS AND LOCKS TO PREVENT LOSS DURING SHIPPING